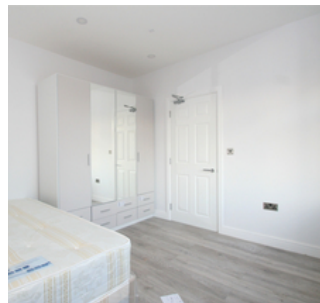




£1,600 PCM

RODBOROUGH ROAD, GOLDERS GREEN, LONDON. NW11

- Stunning One bedroom Apartment
- Open Plan Kitchen and Reception
- Double Bedroom
- Golders Green Station
- Modern and Stylish Interiors



PROPERTY SUMMARY

We are pleased to offer a spacious and airy first floor, one bed apartment in Golders Green. This property consists of an open-plan intergrated kitchen and lounge with wooden flooring throughout with touch of a modern finish interiors.

It is close to Golders Green Tube Station (Northern Line) and other tansports links to Brent Cross Shopping Centre and Central of London. Available Now.

Available May 2024.