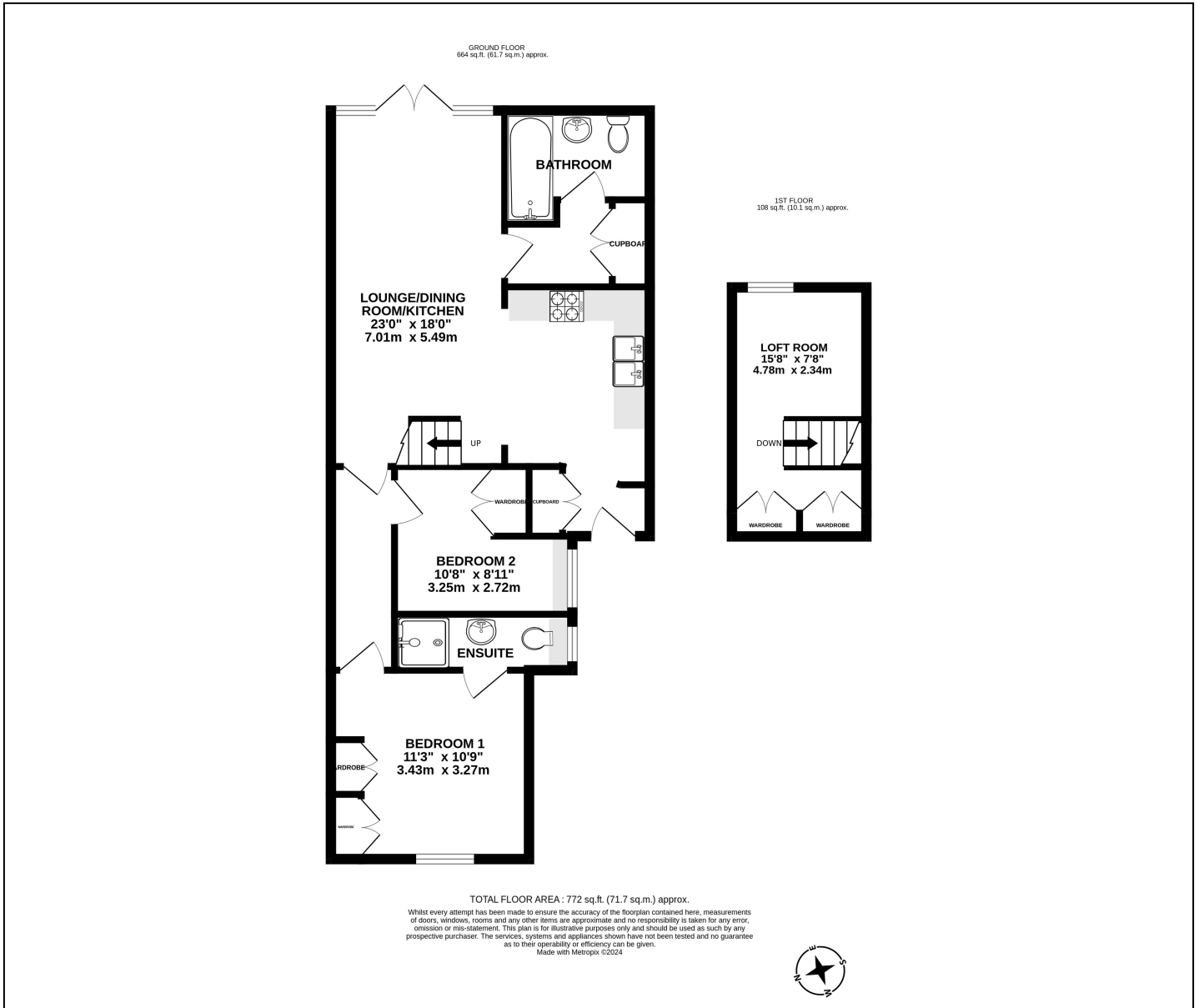


Wood Road, Shepperton, TW17 0DX
£450,000



- Two Bedroom Semi Detached Bungalow
- Fantastic 130ft Garden
- Driveway For Two Vehicles
- No Onward Chain
- Two Bathrooms
- Converted Loft Room
- Catchment Area For Reputable Schools
- Freehold, Council Tax Band D £2408



Energy Efficiency Rating		Current	Potential
Very energy efficient - lower running costs			
(92+)	A		
(81-91)	B		
(69-80)	C		82
(55-68)	D	63	
(39-54)	E		
(21-38)	F		
(1-20)	G		
Not energy efficient - higher running costs			
England, Scotland & Wales		EU Directive 2002/91/EC	

We have not tested the services or domestic appliances so we cannot verify that they are in working order. The buyer is advised to obtain verification from their solicitor or surveyor. These particulars form no part of any offer or contract and their accuracy cannot be guaranteed.