

63 St Johns Road, Petts Wood, Orpington, Kent, BR5 1HT

## Property Images

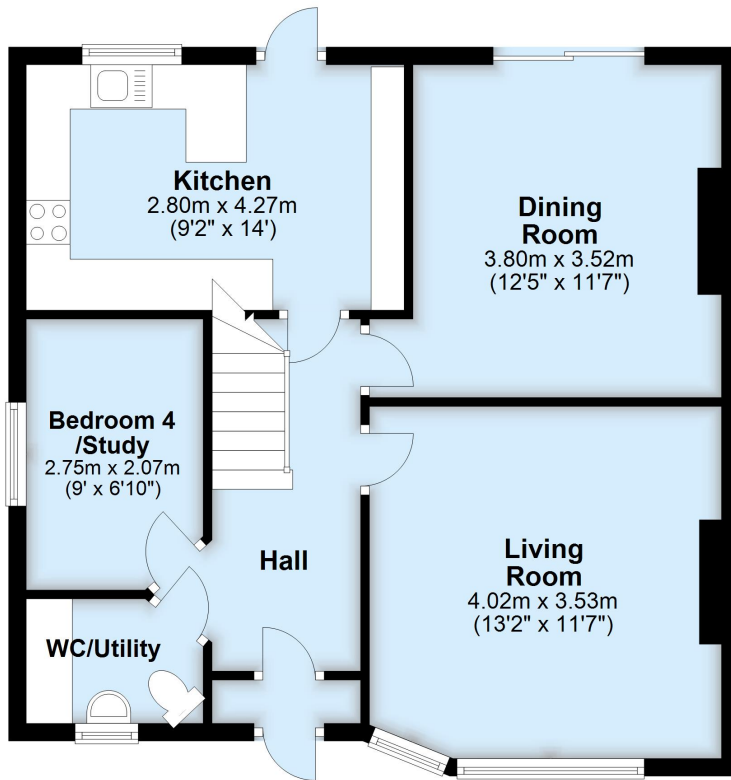






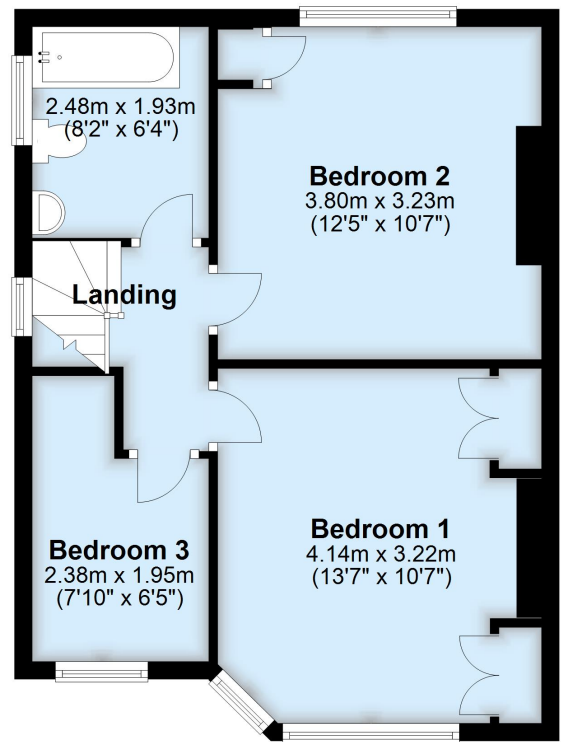
## Ground Floor

Approx. 61.0 sq. metres (656.6 sq. feet)



## First Floor

Approx. 44.4 sq. metres (478.4 sq. feet)



Total area: approx. 105.5 sq. metres (1135.1 sq. feet)

This plan is for general layout guidance and may not be to scale.  
Plan produced using PlanUp.