



504 West Terrace, Six Hills House, Kings Road, STEVENAGE, Hertfordshire  
SG1 1AW

**£190,000 - Leasehold**

### Property Summary

This lovely apartment is situated on the 5th floor and comprises of entrance hall, lounge which is open plan to the kitchen area which has integrated appliances, a beautiful presented bathroom which is fully tiled with low level wc, wash hand basin, panelled bath with shower over. The apartment also benefits from allocated Parking.

West Terrace was built around 2 years ago and is close to the Train Station with direct links to London Kings Cross and easy access to the A1(M)

This would be an ideal first time or investment purchase Entrance Hall

Lounge 14' 7" x 10' 7" (4.44m x 3.23m)

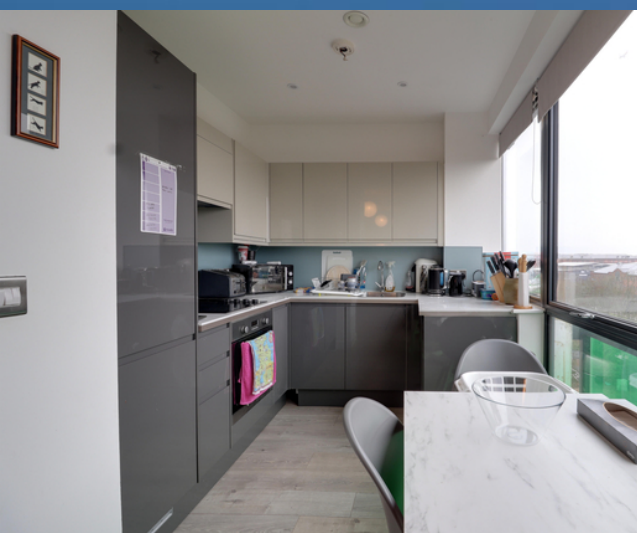
Kitchen 9' 9" x 8' 2" (2.97m x 2.49m)

Bedroom 10' 7" x 8' 3" (3.23m x 2.51m)

Bathroom

### Features

- Modern Apartment
- Parking
- Close to station
- Ideal first time or investment purchase!!





Room Descriptions

