



Brakespeare Street,
Goldenhill, Stoke-on-
Trent



OneAgency

01782 970222

hello@oneagencygroup.co.uk



Offers in Region of £125,000

A spacious three bedroom, mid terraced house in the popular location of Goldenhill. The property benefits from two reception rooms, ground floor bathroom and three bedrooms to the first floor. This very well presented property is ready to move straight into and is considered ideal for both owner occupiers and landlords. Located close to amenities, schools and commuter links such as A500 & M6. Viewing is highly advised. No Chain!





Ground Floor

Reception Room One

3.53m x 3.14m (11' 7" x 10' 4") UPVC front door, double glazed window, radiator and carpet flooring.

Reception Room Two

3.51m x 3.19m (11' 6" x 10' 6") Fireplace and surround, double glazed window, radiator and carpet flooring.

Kitchen

3.25m x 1.81m (10' 8" x 5' 11") A range of wall and base units with worktops, stainless steel sink basin, integral oven and gas hob, space for a fridge/freezer, double glazed window and tiled flooring.

Lobby

Cupboard housing the combi boiler.

Bathroom

2.23m x 1.70m (7' 4" x 5' 7") A white suite with bath and overhead shower, vanity hand wash basin, low level W/C, radiator, double glazed window, part tiled walls and tiled flooring.



First Floor

Bedroom One

3.55m x 3.15m (11' 8" x 10' 4") A double glazed window, radiator and carpet flooring.

Bedroom Two

3.21m x 2.49m (10' 6" x 8' 2") A double glazed window, storage cupboard, radiator and carpet flooring.

Bedroom Three

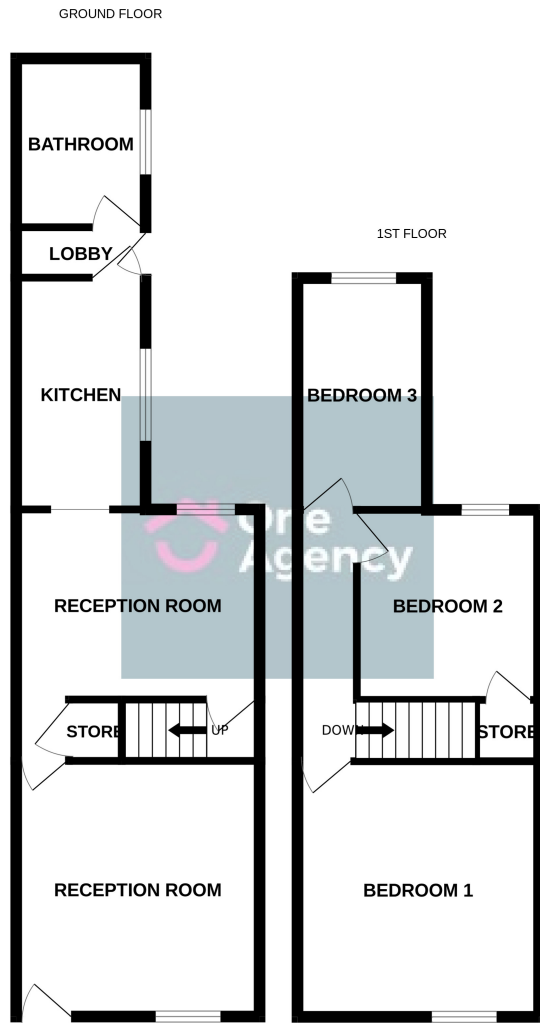
3.23m x 1.81m (10' 7" x 5' 11") A double glazed window, radiator and carpet flooring.

External

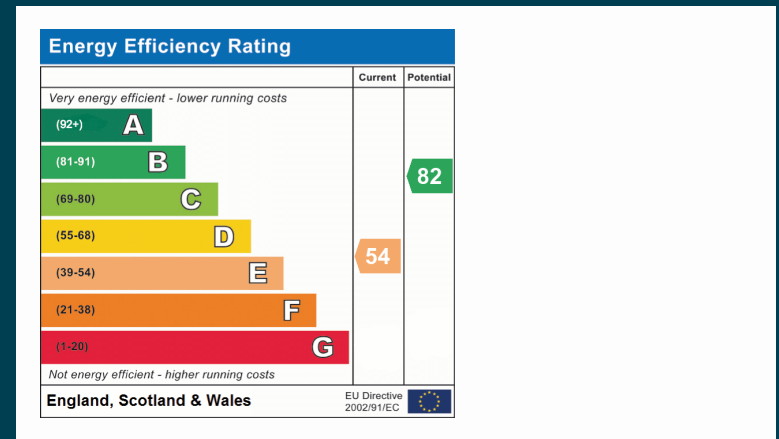
A paved yard with gated access.

AGENTS NOTES

The council tax band is A. The local authority is Stoke-on-Trent.



Whilst every attempt has been made to ensure the accuracy of the floorplan contained here, measurements of doors, windows, rooms and any other items are approximate and no responsibility is taken for any error, omission or mis-statement. This plan is for illustrative purposes only and should be used as such by any prospective purchaser. The services, systems and appliances shown have not been tested and no guarantee as to their operability or efficiency can be given.
Made with Metropix ©2024



OneAgency, 9 & 10 Ridge House Drive, Festival Park, Stoke-on-Trent, ST1 5SJ

01782 970222

hello@oneagencygroup.co.uk

Every attempt has been made to ensure accuracy, however, all measurements are approximate and for illustrative purposes only. **Not to scale.**

In accordance with The Consumer Protection from Unfair Trading Regulations 2008 the following particulars have been prepared in good faith and they are not intended to constitute part of an offer or contract. We have not carried out a structural survey and the services, appliances and specific fittings have not been tested. All photographs, measurements, floor plans and distances referred to are given as a guide only and should not be relied upon for the purchase of carpets or any other fixtures and fittings. Lease details, service charges and ground rent (where applicable) are given as a guide only and should be checked and confirmed by your Solicitor prior to exchange of contracts.