

# elevation

estate agents | est. 1992

9 Whittle Court,  
Knowlhill, Milton Keynes, MK5 8FT

Tel: 01908 231 551  
mail@elevationestateagents.com



**14 Selkirk Drive, Oakridge Park, MILTON  
KEYNES, Buckinghamshire, MK14 6FF**

**£285,000 Freehold**

- 2 Bedrooms
- Top Floor Study
- Private roof terrace
- Desirable Oakridge Park
- Local Shopping
- Scenic Nearby Parklands
- Modern Architecture
- Fantastic Ideals
- Allocated Parking
- EPC Rating



See our full selection of properties online at [www.elevationestateagents.com](http://www.elevationestateagents.com)



Two/three bedroom property with fantastic roof terrace. Within walking distance to the new Oakridge Park Retail Development, nearby open parkland and canal walks

Offered in great condition throughout this property will be available for a short time only. Its ample accommodation boasts open plan living space, including kitchen, dining and living area, with a cloakroom also to the ground floor. With master bedroom with fitted wardrobes, a second double bedroom and family bathroom to the first floor. Up again, to the second floor which boasts a study/third bedroom and access to the enormous roof terrace, perfect for lazy days (and nights), after work drinks and evening entertainment.

To the outside of the property there is an allocated parking space.

## Entrance Hall

## Cloakroom

## Kitchen

## Lounge (Reception)

## Bedroom

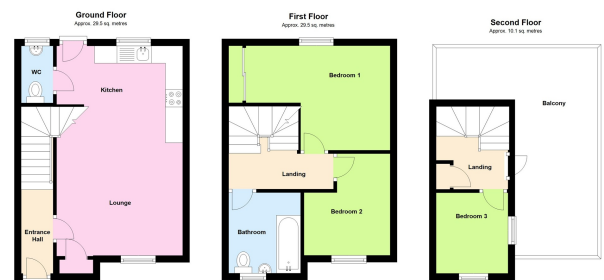
## Bedroom

## Bathroom

## Bedroom/Study

## Disclaimer

Whilst we have endeavoured to prepare our sales particulars accurately none of the services, appliances or equipment have been tested. A buyer should satisfy themselves on such matters prior to purchase. Any measurements or distances mentioned in these particulars are for guide reference only. If such particulars are fundamental to a purchase, buyers should rely on their own enquiries. All enquiries should be directed to Elevation Estate Agents in the first instance.



Total area: approx. 69.0 sq. metres  
Floor Plans are for general purposes only.  
Plans produced using Planitix