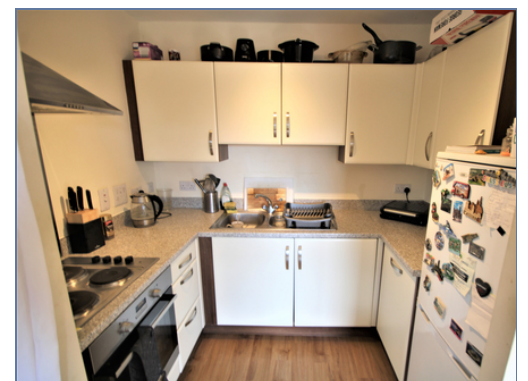




**8 Carinthia House, Broughton Grounds  
Lane, Brooklands, MILTON KEYNES,  
Buckinghamshire, MK10 7FD**

**£220,000 Leasehold**

- Spacious Lounge
- 2 Bedrooms
- En-suite to Master
- Great Location in Broughton
- Many Local Shops and Amenities
- Allocated Parking
- Large Apartment
- EPC Rating





## **Entrance Hall**

## **Kitchen**

## **Lounge (Reception)**

## **Bedroom**

## **Ensuite**

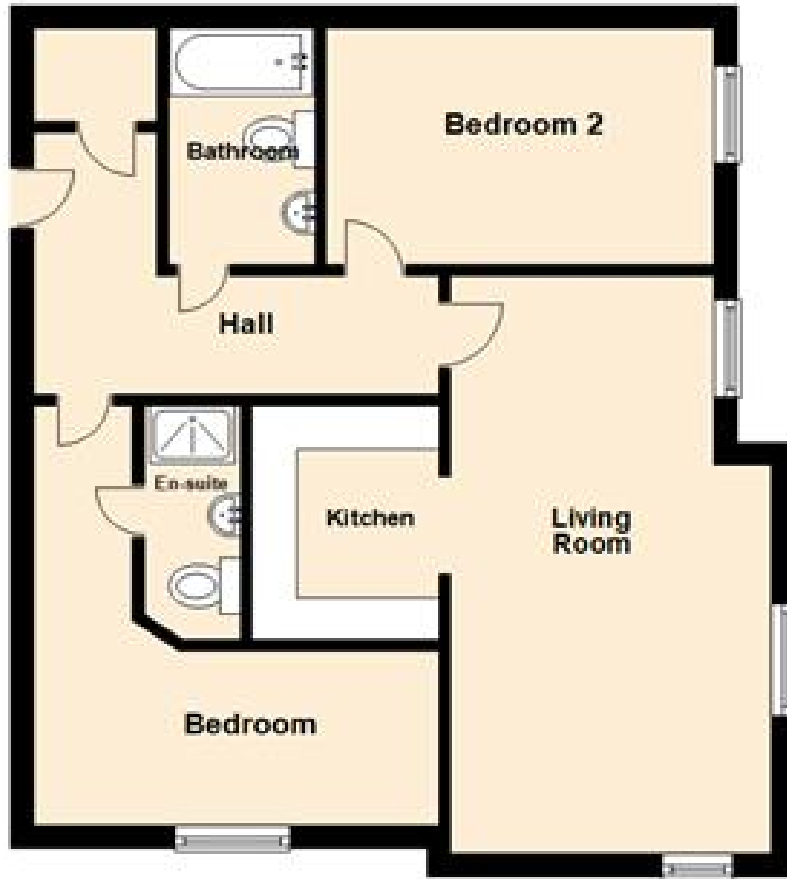
## **Bedroom**

## **Bathroom**

## **Disclaimer**

Whilst we have endeavoured to prepare our sales particulars accurately none of the services, appliances or equipment have been tested. A buyer should satisfy themselves on such matters prior to purchase. Any measurements or distances mentioned in these particulars are for guide reference only. If such particulars are fundamental to a purchase, buyers should rely on their own enquiries. All enquiries should be directed to Elevation Estate Agents in the first instance.

## Ground Floor



Floor plans are for layout purposes only. Measurements are approximate and subject to inaccuracies  
Plan produced using PlanUp.