



**36 Mitcham Place, Bradwell Common,
Milton Keynes, Buckinghamshire, MK13
8BX**

£220,000 Freehold

- THREE BEDROOM
- GARAGE AND PARKING
- SCOPE FOR UPGRADING THROUGHOUT
- CLOSE TO CENTRE:MK
- FLEXIBLE LAYOUT
- BRILLIANT COMMUTER LINKS
- LARGE PRIVATE GARDEN
- LOCATION OF BRADWELL COMMON
- EPC Rating TBC





GROUND FLOOR

Entrance Hall

Doors leading to:

Lounge

5.39m x 3.54m (17' 8" x 11' 7")

Kitchen Diner

5.25m x 2.64m (17' 3" x 8' 8")

Downstairs Cloakroom

Fitted to comprise two piece suite

Bedroom Three / Study

3.01m x 1.70m (9' 11" x 5' 7")

FIRST FLOOR

Landing

Doors leading to:

Bedroom One

5.38m x 2.62m (17' 8" x 8' 7")

Bedroom Two

5.37m x 2.58m (17' 7" x 8' 6")

Family Bathroom

Fitted to comprise three piece suite

EXTERIOR

Rear Garden

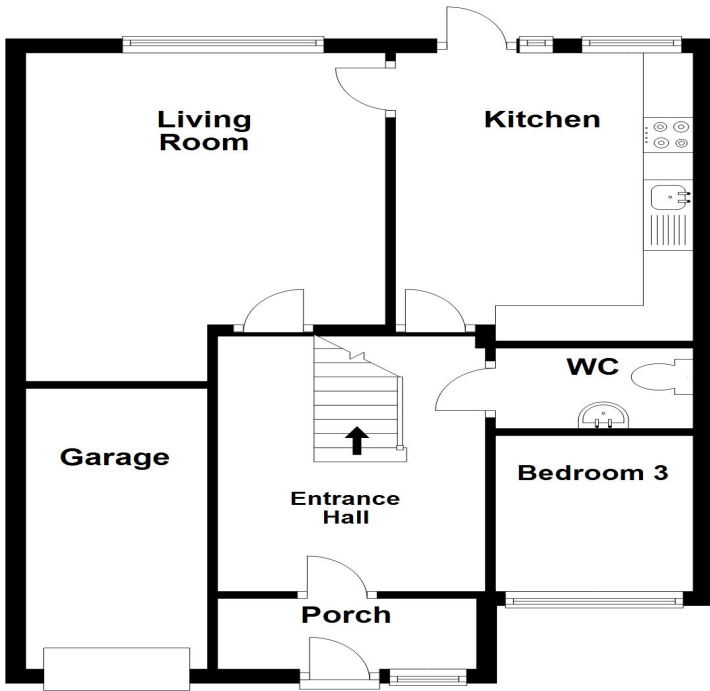
Single Garage

Off Road Parking
Space for one vehicle

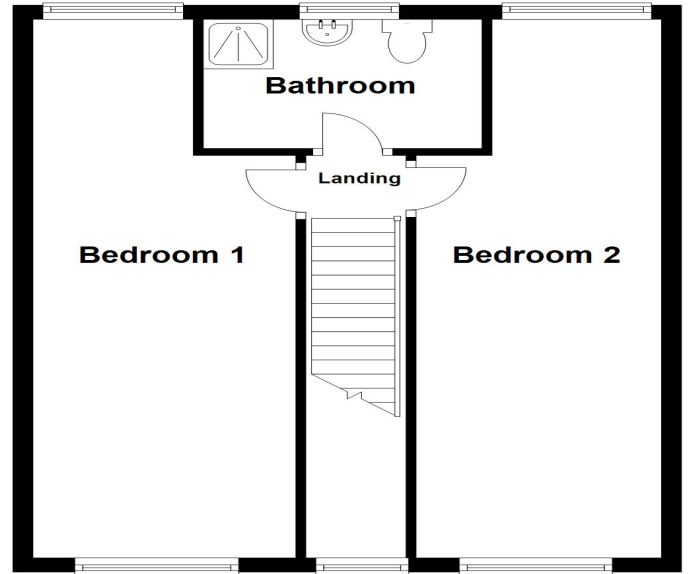
Disclaimer

Whilst we have endeavoured to prepare our sales particulars accurately none of the services, appliances or equipment have been tested. A buyer should satisfy themselves on such matters prior to purchase. Any measurements or distances mentioned in these particulars are for guide reference only. If such particulars are fundamental to a purchase, buyers should rely on their own enquiries. All enquiries should be directed to Elevation Estate Agents in the first instance.

Ground Floor



First Floor



elevation estate agents
Plan produced using PlanUp.