

3 Bedroom(s), Semi-Detached House, Freehold

Manor Drive, Bennethorpe.



- 3D Virtual Tour Available
- Spacious Semi Detached Family Home
- Open Plan Lounge and Dining Room
- Three Bedrooms Two of which are Doubles
- Front and Rear Enclosed Gardens

- Tandem Garage and Driveway Allowing for Multiple Cars To Park
- Kitchen Diner
- Ground Floor W/C
- Modern Bathroom Suite
- Extended to the Rear

**Offers Over
£230,000
Reduced**

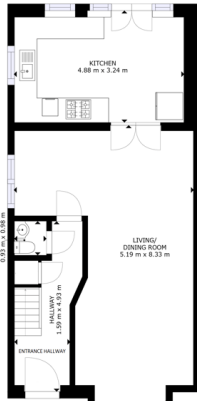
Book your viewing today Tel: 01302 247754

Owner's View

3D Virtual Tour Available- Take a closer, more detailed look around via our 3D Virtual Tour! Don't forget that you can also check availability for viewings online via a visit to our website... This lovely family home is in the perfect location for the City Centre, with local amenities, a GP surgery and much more on your door step. The street has a great community feel and lovely neighbours. The spacious garage, situated at the rear of the property and accessed via the driveway, offers ample storage with dimensions measuring approximately 2.769 meters by 12.446 meters.

Ground Floor

Floor Plan



FLOOR 1

GROSS INTERNAL AREA
FLOOR 1: 41.41 m² FLOOR 2: 17.17 m²
TOTAL: 58.58 m²
SIZES AND DIMENSIONS TO PERIMETERS, ACTUAL MAY VARY

Matterport

Entrance Hallway



Kitchen Diner



Open Plan Lounge Dining Room

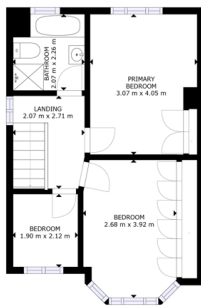


Ground Floor W/C



First Floor

Floor Plan



FLOOR 2

DEED INTERNAL AREA
FLOOR 1: 41 m², FLOOR 2: 37 m²
TOTAL: 78 m²
SIZES AND DIMENSIONS ARE APPROXIMATE. ACTUAL MAY VARY.

Matterport

First Bedroom



Second Bedroom



Third Bedroom



Family Bathroom



External

Front Aspect



Rear Garden



The Garages measures approx. 2.769 meters by 12.446 meters.

Property Information

Council Tax Band - B

Utilities - Mains Gas, Mains Electricity, Mains Water

Water Meter - Yes

Average Annual Electricity Bills -

Average Annual Gas Bills -

Average Annual Water Bills -

Tenure - Freehold



Solar Panels - No

Space Heating System - Gas Combi Boiler with Radiators

Approximate Heating System Installation Date - Approx. 10 years

Water Heating System - Gas Combi Boiler

Approximate Water Heating Installation Date - Approx. 10 years

Boiler Location - Bathroom cupboard

Approximate Electrical System Installation Date - Not Known

Approximate Electrical System Test Date - Not Known

Fires/Heaters - None

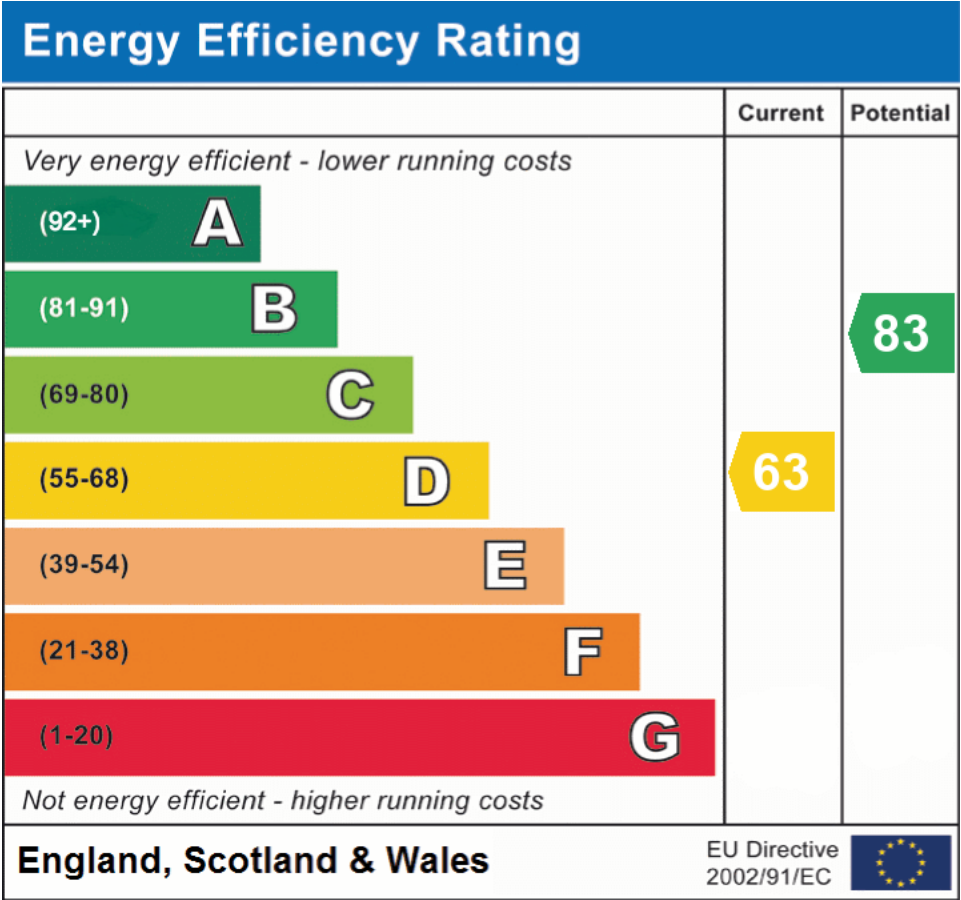
Permanent Loft Ladder - Yes

Loft Insulation - Yes

Loft Boarded out - Yes

Whilst every effort is made to ensure that the information contained in these particulars is reliable, they do not constitute or form part of an offer or any contract. The Property Hive accept no liability for the accuracy of the contents, and therefore they should be independently verified by prospective buyers or tenants before agreeing an offer. All measurements provided are approximate and should be verified before exchange of contracts. No appliances, fixtures or fittings have been tested and should be checked by the buyer before exchange of contracts to ensure they are in good working order.

Energy Performance Certificate



All measurements provided are approximate and should be verified before exchange of contracts. No appliances have been tested and should be checked to ensure they are in good working order.