

FOR SALE

Blythe Road,
West Kensington, W14

Flat
Brook Green

£475,000 lh

1  1  1 

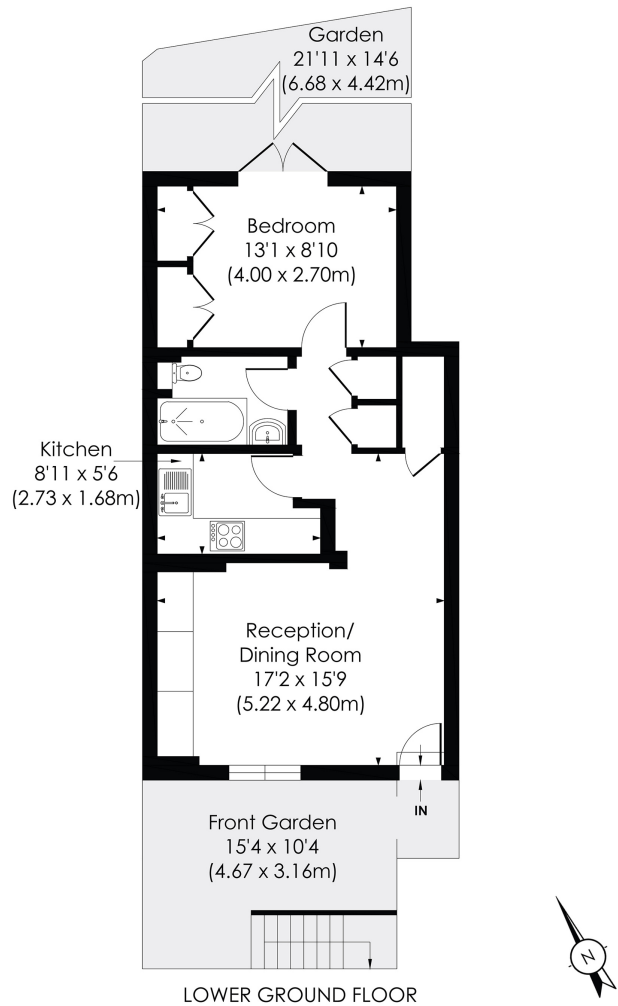


**horton
andgarton**

SALES / LETTINGS / PROPERTY MANAGEMENT

hortonandgarton.co.uk | Sales 020 8819 0510 | Lettings 020 8819 0511
172 King Street, Hammersmith, W6 0QU





LOWER GROUND FLOOR

BLYTHE ROAD 132A, W14

Approx. Gross Internal Floor Area

472 Sq' / 43.82 SqM



© Pixangle Property Marketing Ltd. info@pixangle.com Tel: 0208 870 2118

This floor plan has been prepared for the purpose of illustration only in accordance with the latest RICS code of measuring practice and is not to scale. All measurements and areas are approximate and whilst every effort has been made to ensure the accuracy of the plan contained here, no responsibility is taken for any error, omission or misstatement.



Victorian conversion | 21'11 private garden | 472 Sq' - 43.82 SqM | EPC rating C | One bedroom - One bathroom | Brook Green



hortonandgarton.co.uk

Sales 020 8819 0510

Lettings 020 8819 0511

172 King Street, Hammersmith, W6 0QU