



High Street, Gravenhurst, Bedford MK45 4HY





3 Bedroom Detached Bungalow

Guide Price £375,000 Freehold

In the heart of Gravenhurst comes this unique three bedroom detached bungalow. Set in a quiet location overlooking some incredible local countryside, this bungalow just needs a little modernising and could be something really spectacular. Book now to view!

- Three bedroom bungalow
- Quiet village location
- Chain free
- Requires modernisation
- Garage and driveway
- Stunning views
- South facing garden
- Potential to extend (STP)
- Viewing recommended
- EPC rating C. Council tax band D

Ground Floor

Entrance Hallway:

Carpeted throughout with openings into all rooms. Radiators. Cupboard storage. Loft access.

Living Room/ Dining Room:

Abt. 19' 1" x 10' 8" (5.99m x 3.25m) Carpeted. Fireplace. Radiator. Wallpaper feature wall.

Kitchen:

Abt. 10' 7" x 6' 5" (2.95m x 1.96m) Parque style flooring. Worktops with a range of appliances. Splashback tiling. Side door to outside. Cooker with hob extractor.

Principal Bedroom:

Abt. 13' 8" x 10' 5" (4.17m x 3.17m) Carpeted. Fitted curtains. Fitted storage cupboard. Dual aspect. Radiator.

Bedroom Two:

Abt. 10' 2" x 9' 0" (3.10m x 2.74m) Wallpaper. Carpeted. Radiator. Fitted curtains.

Bedroom Three:

Abt. 7' 5" x 7' 2" (2.26m x 2.18m) Dual purpose room. Shelving fitted. Radiator. Fitted curtains.

Family Bathroom:

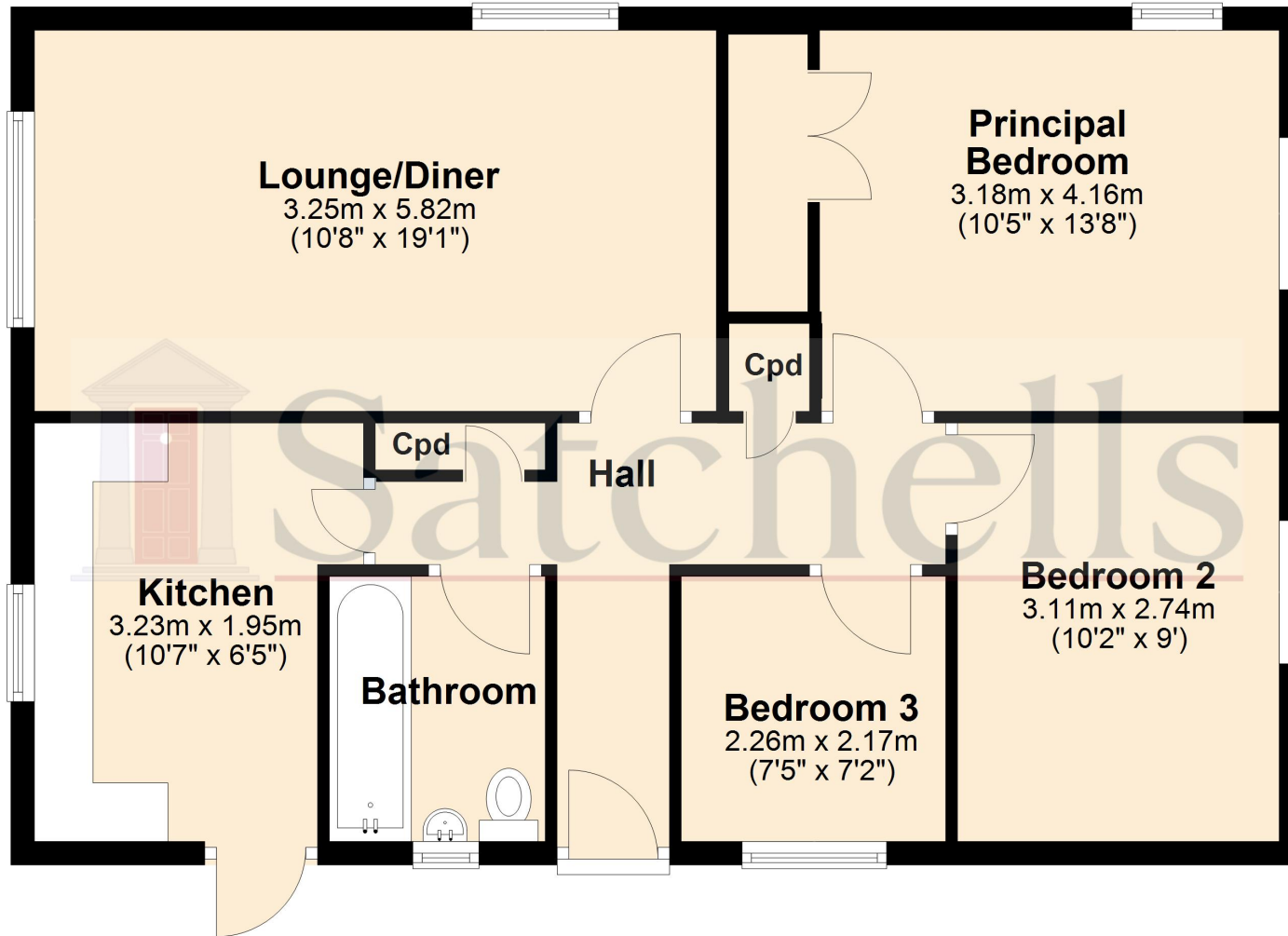
Carpeted. Low level flush WC. Fitted bathtub. Wash hand basin. Radiator.



These particulars are a guide only and do not constitute an offer or a contract. The floor plan is for identification purposes only and not to scale. All measurements are approximate and should not be relied upon if ordering furniture, white goods and flooring etc. We have presented the property as we feel fairly describes it but before arranging a viewing or deciding to buy, should there be anything specific you would like to know about the property please enquire. Satchells have not tested any of the appliances or carried out any form of survey and advise you to carry out your own investigations on the state, condition, structure, services, title, tenure, and council tax band of the property. Some images may have been enhanced and the contents shown may not be included in the sale. Satchells routinely refer to 3rd party services for which we receive an income from their fee. If you would like us to refer you to one of these services please ask one of our staff who will pass your details on. We advise you check the availability of the property on the day of your viewing.



Ground Floor



For illustrative purposes only - NOT TO SCALE - Measurements shown are approximate. The size and position of doors, windows, appliances and other features are approximate.
Plan produced using PlanUp.