

Devonshire Business Centre
Works Road
Letchworth Garden City
SG6 1GJ



Tel: 01462 419329
info@leysbrook.co.uk | www.leysbrook.co.uk



Bidwell Close, Letchworth Garden City, Hertfordshire, SG6

£1,150 pcm Leasehold

- Available beginning of August - Unfurnished
- Second floor TWO bedroom Apartment
- Two DOUBLE bedrooms
- Fitted kitchen with built in oven & hob, fridge/freezer and washing machine
- Spacious LIVING ROOM
- Allocated private OFF ROAD parking space
- Just over HALF a MILE walk to Letchworth STATION and town centre
- Just over a mile to the A1(M)





Available beginning of August | Two DOUBLE Bedrooms | Good size living room | Fitted kitchen with appliances | MODERN Three piece bathroom suite | Just over HALF a MILE walk to Letchworth STATION | Private OFF ROAD PARKING space |

Inside, the hallway leads through to a good size living room, fitted kitchen with appliances, two good size double bedrooms and a bathroom with a shower over the bath.

Situated on the second floor of a purpose built block in a quiet residential street within walking distance of the town centre and MAINLINE station and just over a mile to the A1(M) making it an ideal location for commuters.

□ Call the Leysbrook team to arrange a viewing before it goes.

| ADDITIONAL INFORMATION

Availability: Available from beginning of August

Deposit: £1,211.00

Pets: Sorry, pets NOT allowed

Parking Arrangements: Allocated off road parking space

Council Tax Band: B

| SECOND FLOOR

Living Room: Approx 15' 5" x 10' 3" (4.70m x 3.12m)

Kitchen: Approx 8' 6" x 7' 7" (2.59m x 2.31m)

Main Bedroom: Approx 13' 7" x 9' 3" (4.14m x 2.82m)

Bedroom Two: Approx 9' 6" x 7' 8" (2.90m x 2.34m)

Bathroom: Approx 6' 3" x 5' 5" (1.91m x 1.65m) Three piece bathroom suite with electric shower over the bath

| OUTSIDE

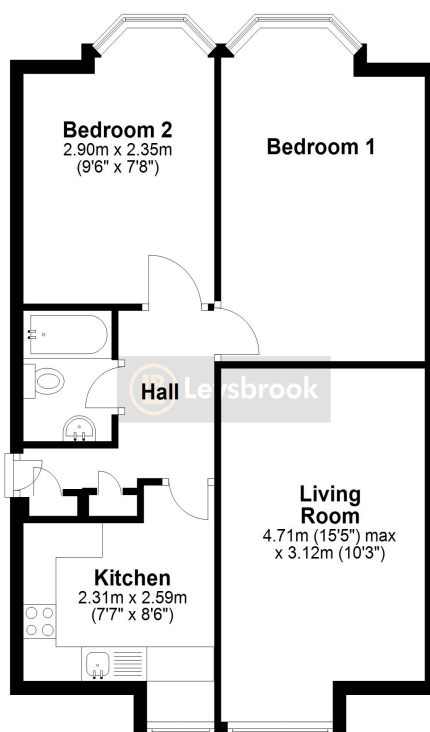
Allocated off road parking and visitors parking

| Two DOUBLE Bedrooms | Good size living room | Fitted kitchen with appliances | MODERN Three piece bathroom suite | Just over HALF a MILE walk to Letchworth STATION | Private OFF ROAD PARKING space | Contd....



Ground Floor

Approx. 55.3 sq. metres (594.8 sq. feet)



Total area: approx. 55.3 sq. metres (594.8 sq. feet)

Created by Leysbrook for guide purposes only. This plan is NOT TO SCALE and is intended to illustrate the general layout of the property and should be used as such by any prospective purchaser. Whilst every attempt has been made to ensure the accuracy of the floor plan, measurements of doors, windows, rooms and any other items are approximate and no responsibility is taken for any error, omission or misstatement. The services, systems and appliances shown have not been tested and no guarantee of their operability can be given.
Plan produced using PlanUp.

Energy Efficiency Rating		
	Current	Potential
Very energy efficient - lower running costs		
(92-100) A		
(81-91) B		
(69-80) C	74	78
(55-68) D		
(39-54) E		
(21-38) F		
(1-20) G		
Not energy efficient - higher running costs		
England, Scotland & Wales		
	EU Directive 2002/91/EC	