

Church Road, Great Finborough, Stowmarket



- ESTABLISHED COTTAGE GARDEN
- NO ONWARD CHAIN
- PRIVATE ROAD ACCESS
- WHITE GOODS INCLUDED
- OUTBUILDING
- LARGE CONSERVATORY
- DISCREETLY SITUATED
- SUPERB VIEWS OF FINBOROUGH HALL
- MAIN BEDROOM WITH ENSUITE
- ALLOCATED CAR PARKING

MARKS & MANN



Church Road, Great Finborough, Stowmarket

No Onward Chain

A delightful, spacious and bright, three bedroom, detached bungalow with outbuilding, quintessential cottage garden, and wonderful views of the stunning 18th century Finborough Hall, and its surrounding grounds.

This property immediately offers a feeling of exclusivity due to its private road access that passes by the striking St Andrews Church, and that feeling continues walking up to the partially screened, bungalow's front entrance via its decorative front garden.

MARKS & MANN

8 Needham Rd, Stowmarket, Suffolk, IP14 2AW.

01449 867 590

contactstowmarket@marksandmann.co.uk

Website www.marksandmann.co.uk

£400,000 Offers Over

Church Road, Great Finborough, Stowmarket

Front

Partially screened with access via patio style pathway and decorative front garden to double door entrance

Hallway

Double door entrance to front, with laminate flooring.

Living Room

6.78m x 5.0m(22.3"x16'5")
Dual aspect, fully carpeted, fireplace with electric fire, two radiators and double doors to garden.

Kitchen

3.20m x 2.95m(10'6" x 9'8")
With skylight, laminate flooring, lower and upper base units, utility area, convector hob, fitted dual electric oven and grill, built in fridge freezer, single sink and mixture of wood and tiled splash back.

Conservatory

4.88m x 2.34m(16'0" x 7'8")
Tiled floor and fully glazed with double door entrance to main bedroom, double door entrance to garden and double door entrance to kitchen.

Main Bedroom

4.98m x 3m(16'4" x 9'10")
Laminate flooring, fitted wardrobe, storage cupboard, radiator, double doors to conservatory and ensuite with skylight, floor to ceiling tiling, WC and wash basin and contained shower unit.

Bedroom 2

3.4m x 2.79m(11'2" x 9'2")
Double bedroom, laminate flooring and radiator

Bedroom 3

2.84m x 2.08m(9'4" x 6'10")
Single bedroom, laminate flooring and radiator

Family Bathroom

With skylight, large walk-in-shower, WC and hand basin, floor to ceiling tiling

Main Garden

Mainly laid to lawn with established trees and shrubs and patio area.

Outside

If you like a cottage style garden then you are in for a treat with this wonderfully secluded and established plot that offers screening through its several trees, and colour with its established shrubs and plants. There are two green houses to the side of the garden that wraps around three sides of the property, eventually offering superb views of Finborough Hall. There is allocated communal parking for the bungalow and the four other properties that share the private road access. An additional benefit to the bungalow is an outbuilding that has excellent potential for home office use (STP).

Outbuilding

Situated in the communal access zone opposite the bungalow and outside the boundaries of the property.

Services

Oil Fire Heating, Mains Electricity, Mains Water, Mains Drainage

Parking

Communal parking

Disclaimer

In accordance with Consumer Protection from Unfair Trading Regulations, Marks and Mann Estate Agents have prepared these sales particulars as a general guide only. Reasonable endeavours have been made to ensure that the information given in these particulars is materially correct but any intending purchaser should satisfy themselves by inspection, searches, enquiries and survey as to the correctness of each statement. No statement in these particulars is to be relied upon as a statement or representation of fact. Any areas, measurements or distances are only approximate. New build properties - the developer may reserve the right to make any alterations up until exchange of contracts.

Money Laundering Regulations

Intending purchasers will be asked to produce identification documentation at a later stage and we would ask for your co-operation in order that there will be no delay in agreeing the sale.

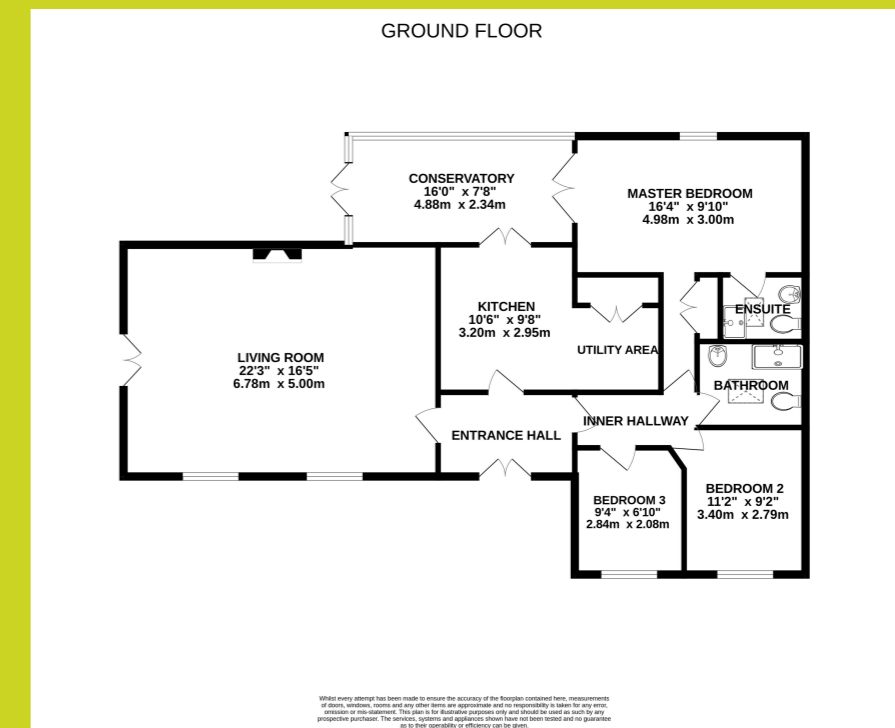
Church Road, Great Finborough, Stowmarket

School Admissions

To verify the school catchment area contact Suffolk County Council on 0845 600 0981. Purchasing a house in a certain area doesn't automatically guarantee a place at a school within the catchment area.

Council Tax Band

At the time of instruction the council tax band for this property is band E.



The above floor plans are not to scale and are shown for indication purposes only.

