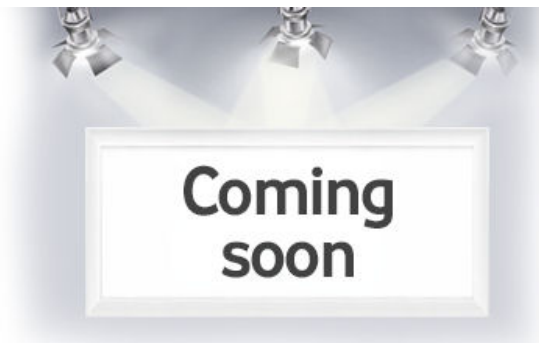




Approximate Gross Internal Area = 1970 sq ft / 183 sq m

Coming soon

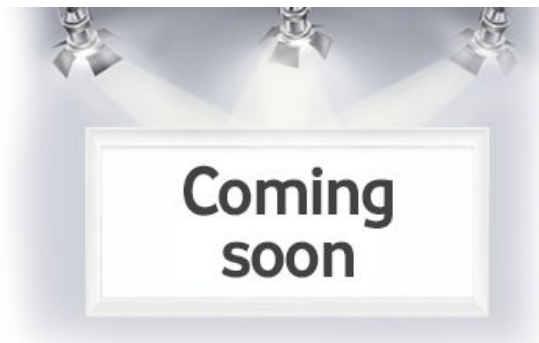


#### Description

Superb Opportunity to acquire 4 stunning bedroom house that has been extended and updated by the current owners to provide modern open-plan living in a very convenient location - only 100 yards of South Farnham School rated OUTSTANDING.

Key Features include - Entrance hall | Sitting room | Superb Kitchen | Breakfast/family/study area | Playroom | Cloakroom | Utility | Main bedroom with en suite bathroom and dressing room | 3 further bedrooms | Family bathroom | Beautiful Gardens | Summer/Pool house with adjoining outside kitchen | Garden shed | Storage area | Parking for several cars | Sunken endless resistance heated swimming pool

In a sought after position on the south side of the Georgian town of Farnham within 100 yards of South Farnham School.



In a sought after position on the south side of the Georgian town of Farnham within 100 yards of South Farnham School. The Georgian town centre of Farnham offers a comprehensive range of shopping, recreational and cultural pursuits, with bustling cobbled courtyards boasting many shops, cafés and an excellent choice of restaurants. There is a Waitrose, Sainsbury's, Leisure Centre, David Lloyd Club, local Rugby, Football and Tennis clubs, and Farnham's historic deer park offering over 300 acres of beautiful open countryside, providing opportunities for walking, cycling and dog walking. There is an excellent choice of both state and private schools in the area including Edgeborough, Waverley Abbey, South Farnham School, Weydon Secondary School, Frensham Heights, St. Edmund's and Barfield.

Material Information - All main services, Superfast broadband available and good mobile signal likely with all providers. Gas fired central heating. Solar panels on roof to complement the hot water.

#### Directions

SAT NAV - GU9 8DY

#### Local Authority

Waverley  
Band G

