

FOR
SALE



15 St Owen Gate, Hereford HR1 2JB

£219,500 - Freehold

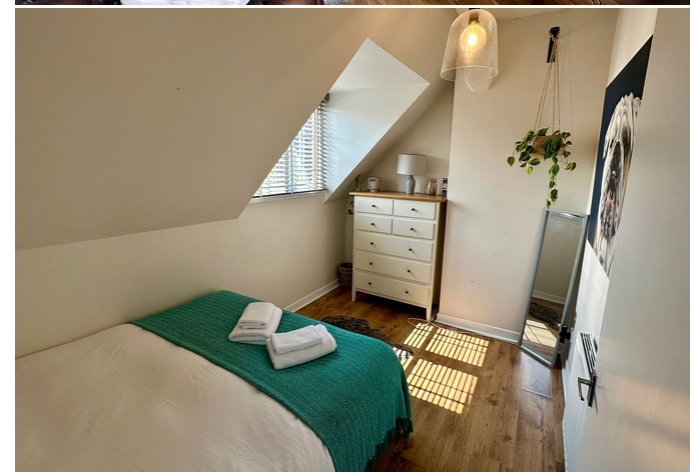
22, Broad Street, Hereford, HR4 9AP 01432 355455 hereford@flintandcook.co.uk

PROPERTY SUMMARY

Occupying a convenient central location within easy walking distance of Hereford city centre, an impressive 3 bedroom, 3 storey end terrace house offering ideal first time buyer/investment accommodation. The property which is well presented throughout, has the added benefit of gas central heating, a large living room, modern kitchen and shower room, a courtyard garden and we highly recommend an internal inspection.

POINTS OF INTEREST

- *Convenient central location*
- *Impressive 3 bedroom, older style end of terrace house*
- *Large living room & fitted kitchen*
- *Ideal for first-time buyers or investment*
- *No onward chain*
- *Must be viewed*



ROOM DESCRIPTIONS

Canopy Porch

With partially double glazed entrance door through to the

Entrance Hall

With feature flooring, central heating thermostat, stairs to the first floor, double glazed side window with shutter style blind and glazed panel door to the

Lounge/Dining Room

An impressive room with feature flooring, 2 radiators, a double glazed window to the front aspect with shutter style blinds, a range of lighting, display shelving, double glazed side window with shutter style blinds, store cupboard, chimney recess with scope to fit an electric fire and glazed panel door to the

Kitchen

With 1 ½ bowl sink unit and mixer tap over, a range of wall and base cupboards, ample high gloss work surfaces with splash backs, double glazed window to the rear, central spotlighting, upright radiator, feature flooring, space for appliances, built in oven and hob and double glazed door to the rear courtyard.

First Floor Landing

With fitted carpet, radiator, under stair storage, stairs leading up the the second floor and door to

Bedroom 1

With exposed floorboards, double glazed windows to the front and side with Venetian blinds, radiator, space for wardrobes and a built in single wardrobe with hanging rail and shelf.

Shower Room

With suite comprising a large corner shower with rainwater style shower head over and glazed sliding doors, vanity wash hand basin with storage below and mirror and shelves over, low flush WC, laminate tiled floor, radiator, tiled wall surround for easy maintenance, double glazed window, extractor fan and useful store cupboards - one housing the gas central heating boiler.

Second Floor Landing

With fitted carpet, double glazed side window with Venetian blind, and door to

Bedroom 2

With laminate flooring, radiator, double glazed window to the front aspect.

Bedroom 3

With fitted carpet, radiator and window to the rear.

Outside

To the rear of the property is a small courtyard garden, perfect for a table and chairs and a useful rear access gate.

Services

Mains water, electricity, drainage and gas are connected. Gas-fired central heating.

Outgoings

Council tax band B - £1,889 payable for 2025/2026

Water and drainage rates are payable.

Directions

Proceed east out of Hereford city along Blue School Street continuing into Bath Street then St Owen Street. St Owen Gate is on your right just before Hereford Fire Station.

Viewing Arrangements

Strictly by appointment through the Agent, Flint & Cook, Hereford (01432) 355455.

Opening Hours

Monday - Friday 9.00 am - 5.30 pm

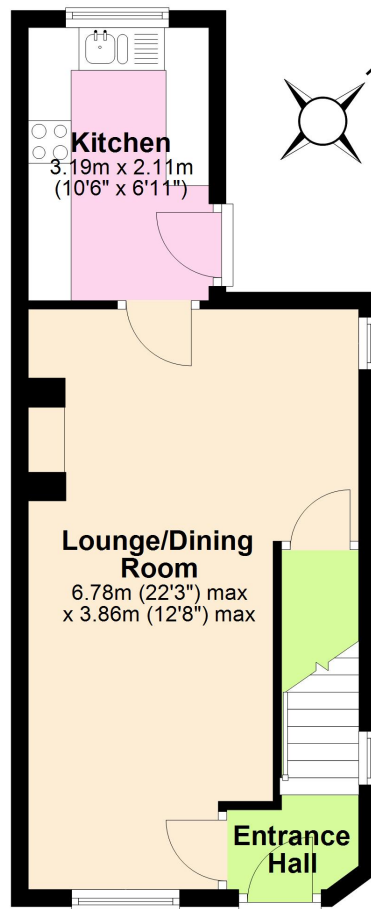
Saturday 9.00 am - 1.00 pm

Money Laundering Regulations

Prospective purchasers will be asked to produce identification, address verification and proof of funds at the time of making an offer.

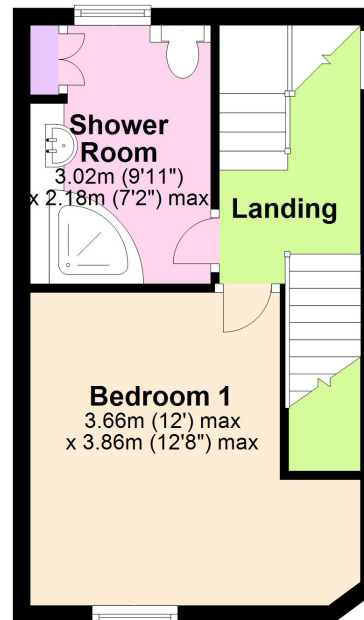
Ground Floor

Approx. 33.1 sq. metres (355.9 sq. feet)



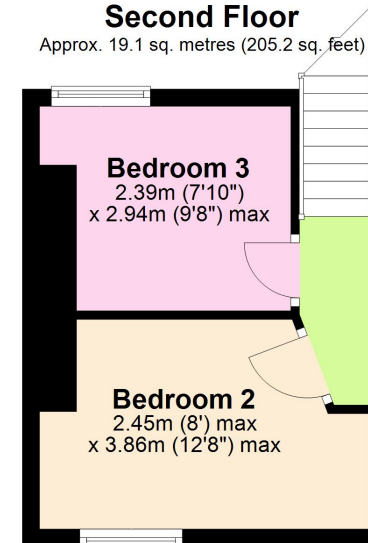
First Floor

Approx. 26.1 sq. metres (281.1 sq. feet)



Second Floor

Approx. 19.1 sq. metres (205.2 sq. feet)



Total area: approx. 78.2 sq. metres (842.2 sq. feet)
15 St Owen Gate, St Owens Street, Hereford

These particulars are prepared for the guidance only of prospective purchasers. They are intended to give a fair and overall description of the property and do not constitute the whole or any part of an offer or contract. Any information contained herein (whether in text, plans or photographs) is given in good faith but should not be relied upon as being a statement or representation of fact. Any plans provided by the agents and/or with the sales particulars are intended for guidance purposes only; we cannot guarantee the accuracy and scale of any plans, and they do not form any part of the sales contract. Nothing in these particulars shall be deemed to be a statement that the property is in good condition or otherwise nor that any services or facilities are in good working order. Any movable contents, fixtures and fittings, (whether wired or not) referred to in these property particulars (including any shown in the photographs) are, unless the particulars say otherwise, excluded from the sale. In the event that the buyer proposes to purchase any movable contents or include them in any offer for the property, the buyer cannot in any respect imply any such inclusion from the property particulars. Any areas, measurements or distances referred to herein are approximate only and may be subject to amendment. It should not be assumed that the property has all necessary planning, building regulation or other consents and these matters must be verified by an intending purchaser. The information in these particulars is given without responsibility on the part of the agents or their clients and neither the agents nor their employees have any authority to make or give any representations or warranties whatever in relation to this property.

Flint & Cook Privacy Statement: We take your privacy very seriously. Your data will not be shared with any other parties without your express permission. Our Data protection Policy can be read in full on the Flint & Cook website, www.flintandcook.co.uk