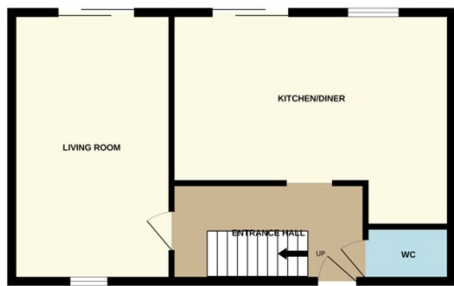



WERRINGTON
£230,000


***** 4 BEDROOMS!***** " Located in a cul de sac location in Werrington is this well presented 4 bedroom property. Within walking distance to both primary and secondary schools, it really is the perfect family home! Briefly comprising of an entrance hall, spacious kitchen/diner with doors out onto the rear garden, living room, downstairs WC, 4 bedrooms and a family bathroom. There is also communal parking at the front. Viewings are essential to appreciate the condition and location of this rarely available 4 bedroom property. Council Tax Band - B / EPC Energy Rating - C