

# elevation

estate agents | est. 1992

9 Whittle Court,  
Knowlhill, Milton Keynes, MK5 8FT

Tel: 01908 231 551   
mail@elevationestateagents.com



**16 Crowborough Lane, Kents Hill, Milton  
Keynes, Buckinghamshire, MK7 6HF**

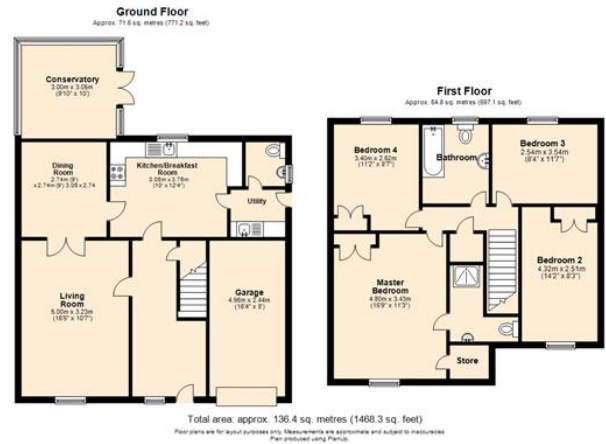
**£525,000**

- Garage, parking for two cars
- Show home condition
- Recently renovated throughout
- Four bedrooms; one en suite
- Large conservatory
- Good school catchment and close to M1
- Chain Free
- EPC Rating





Located within the highly popular Kents Hill development within a short walk to the open green space of Kents Hill Park, a fantastic detached family home. The property offers four bedrooms, garage and off street parking for two cars with an approximate 1,367 sq. ft. of accommodation. This lovely residence is set over two floors. This includes – a kitchen/breakfast room with a utility room off, a sitting room, a dining room and a conservatory. On the first floor there are four bedrooms – with the master having an en suite shower room – and a bathroom. The property also has an enclosed private rear garden and a lawned area to the front adjacent to the parking.



## Outside

To the rear, there is a paved patio area and a railway sleeper retained garden which has flower, shrub and tree borders leading onto a lawn with further borders and a garden shed. All is enclosed by fencing with a side access. There is an integral garage with an up and over door and power and light connected, and there is further parking on the drive for two cars.

## Disclaimer

Whilst we have endeavoured to prepare our sales particulars accurately none of the services, appliances or equipment have been tested. A buyer should satisfy themselves on such matters prior to purchase. Any measurements or distances mentioned in these particulars are for guide reference only. If such particulars are fundamental to a purchase, buyers should rely on their own enquiries. All enquiries should be directed to Elevation Estate Agents in the first instance.