



## The Alford The Alford, The Alford at The Langtons, Homes by Carlton, Redmarshall. TS21 1EL

FINAL ALFORD PLOT 9 AVAILABLE TO RESERVE NOW for £250.

This highly DESIRABLE 4-bedroom EXECUTIVE HOME with an integral SINGLE GARAGE is the perfect family space. The ground floor contains a stunning OPEN-PLAN family, dining and kitchen area. Anthracite sliding doors open onto the turfed garden.

The separate lounge offers perfect peace and tranquillity. The ground floor also benefits from a well fitted utility room and cloakroom.

Moving upstairs, the fabulous and spacious master bedroom is complete with a dressing



**LAST ALFORD AVAILABLE £480,000 Freehold**

## PROPERTY DESCRIPTION

---

FINAL ALFORD PLOT 9 AVAILABLE TO RESERVE NOW for £250.

This highly DESIRABLE 4-bedroom EXECUTIVE HOME with an integral SINGLE GARAGE is the perfect family space. The ground floor contains a stunning OPEN-PLAN family, dining and kitchen area. Anthracite sliding doors open onto the turfed garden.

The separate lounge offers perfect peace and tranquillity. The ground floor also benefits from a well fitted utility room and cloakroom.

Moving upstairs, the fabulous and spacious master bedroom is complete with a dressing area and en-suite facilities. Bedroom Two also benefits from en-suite facilities, offering the option of a perfect guest room. Two further double bedrooms and stylish family bathroom with EGG SHAPED BATH complete this contemporary family home.

Opening Times:

Monday: 10am - 5pm

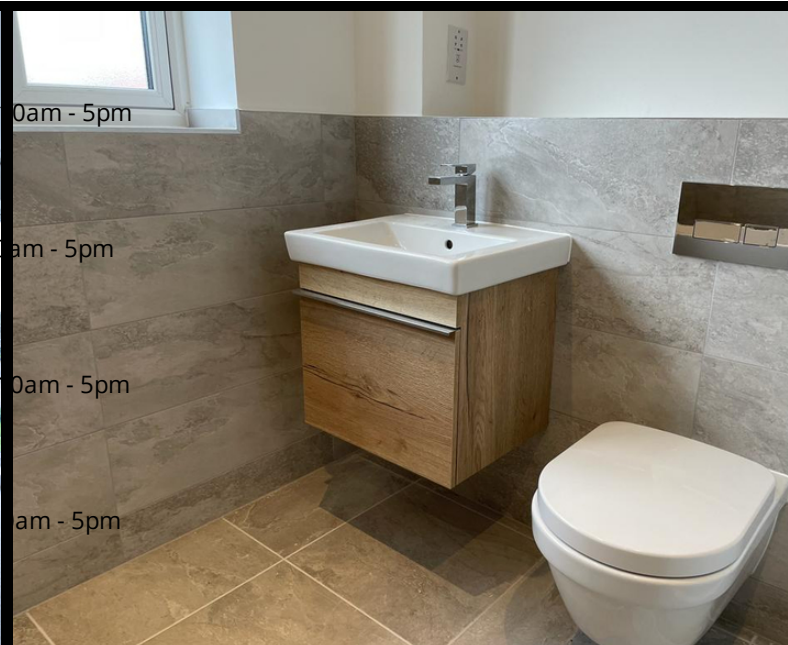
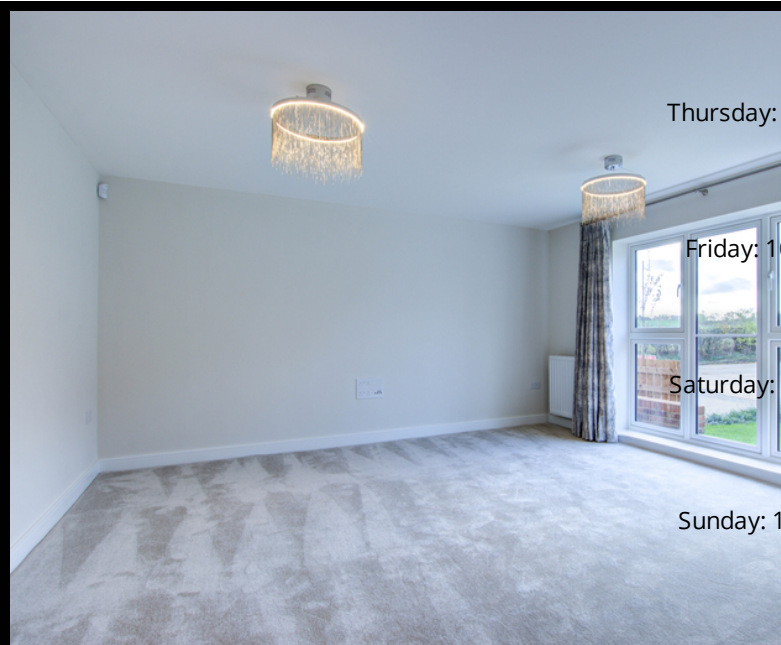
Tuesday & Wednesday: Closed

Thursday: 10am - 5pm

Friday: 10am - 5pm

Saturday: 10am - 5pm

Sunday: 11am - 5pm



## ROOM DESCRIPTIONS

---



# FLOORPLAN

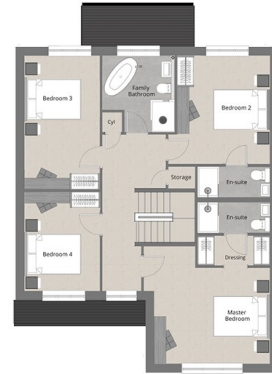
  
The  
Alford



## GROUND FLOOR

GARAGE	3.00 x 6.00 [9'-10" x 19'-8"]
DINING	2.63 x 1.95 [8'-7" x 6'-5"]
FAMILY	3.39 x 6.44 [11'-1" x 21'-2"]
HALL	1.35 x 4.10 [4'-5" x 13'-6"]
KITCHEN	3.49 x 4.98 [11'-5" x 16'-4"]
LIVING	4.29 x 4.40 [14'-1" x 14'-5"]
UTILITY	2.16 x 2.00 [7'-1" x 6'-7"]
WC	1.92 x 1.01 [6'-4" x 3'-4"]

  
The  
Alford



## FIRST FLOOR

BATHROOM	3.05 x 2.80 [9'-11" x 9'-2"]
BED 1	4.29 x 4.40 [14'-1" x 14'-5"]
BED 2	3.11 x 3.98 [10'-3" x 13'-1"]
BED 3	2.80 x 4.98 [9'-2" x 16'-4"]
BED 4	2.80 x 3.71 [9'-2" x 12'-2"]
DRESSING	2.69 x 1.20 [8'-10" x 3'-11"]
EN-SUITE	2.48 x 1.35 [8'-1" x 4'-5"]
EN-SUITE 2	2.48 x 1.35 [8'-1" x 4'-5"]
LANDING	2.40 x 5.85 [7'-10" x 19'-4"]