



7 Sydney Street, Lytham St Annes, Lancashire, FY8 1TR
£750 pcm Not Applicable

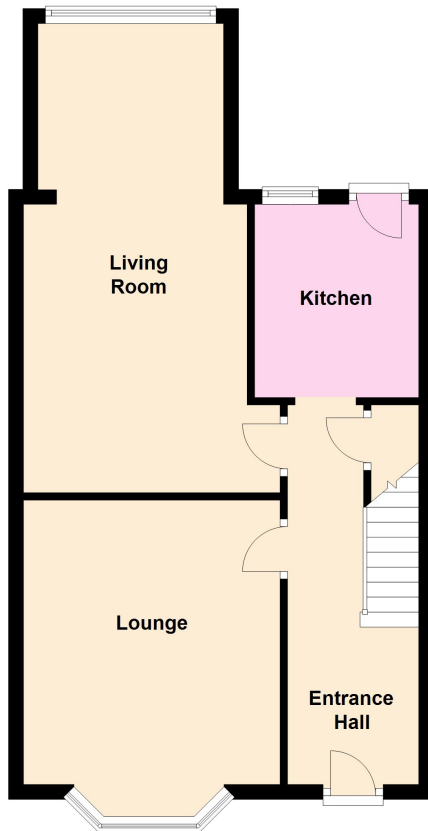
Energy Efficiency Rating		Current	Potential
Very energy efficient - lower running costs			
(92-100)	A		
(81-91)	B		
(69-80)	C		81
(55-68)	D	64	
(39-54)	E		
(21-38)	F		
(1-20)	G		
Not energy efficient - higher running costs			
England, Scotland & Wales		EU Directive 2002/91/EC	

Description

A mid terrace house situated in a cul-de-sac location and convenient for Lytham St Annes centre, local schools and amenities. The accommodation comprises two receptions, a fitted kitchen, three bedrooms and a bathroom. There are gardens to the front and rear. EPC: D CT: B

Ground Floor

Approx. 47.0 sq. metres (505.8 sq. feet)



First Floor

Approx. 40.8 sq. metres (438.7 sq. feet)

