

RTS Richard Turner & Son

AUCTIONEERS, VALUERS & ESTATE AGENTS

Est 1803

SANDSIDE COTTAGE, PILLING

PRICE: £875,000 Region



Council Tax Band: E

Tenure: Freehold

Energy Performance Certificate Band: ***

Royal Oak Chambers, Main Street, Bentham, Lancaster LA2 7HF T: 015242 61444 E: property@rtturner.co.uk W: www.rturner.co.uk

SANDSIDE COTTAGE, FLUKE LANE, PILLING, NR PRESTON, PR3 6HP

Beautiful detached house with superb equestrian facilities, located just minutes away from Pilling Sands, the perfect place for relaxing hacks on quiet country lanes and farmland bridleways with miles of beach to have a gallop on, canter in the sea, coastal rambling / dog walking or just chilling watching the sunsets over Morecambe Bay. **THE PROPERTY IS A REGISTERED SMALLHOLDING.**

The first time in 20+ years this house has been offered for sale, showing true testament to how well loved the house and area has been to the current owners.

VIEWING: Strictly by prior appointment through Richard Turner & Son, Bentham Office.

The Property Briefly Comprises:

Entrance porch, utility, spacious living/dining/kitchen, lounge with feature fireplace and multi fuel stove. 26ft sunroom overlooking the immaculate landscaped gardens, ground floor WC and office/4th bedroom. To the first floor the master bedroom with ensuite, two further double bedrooms and a 'Jack and Jill' bathroom.

Accommodation Comprising:

Ground Floor:

Entrance Porch:

Double glazed door and windows. Tiled floor, wall light and coat hooks. Leading through to the living/dining/kitchen.

Living/Dining/Kitchen:

17'5 x 15'1 (5.31m x 4.60m) Having a range of Shaker style wall and base units incorporating glazed display cupboards, wicker basket drawers and corner display shelving. Island unit with further base units and overhang for a breakfast bar with seating for two/three. Integrated dishwasher and fridge. "Range Master" cooker with 6 gas burner rings, two ovens and grill. Extractor hood over. One and a half bowl stainless steel sink with mixer tap, decorative plinth with inset spotlights. Three double glazed windows, part tiled walls, ceiling spotlights, cushion flooring, under unit lighting, radiator and brushed chrome sockets/light switches.

Lounge:

24'8 x 18'3 (7.52m x 5.56m) Feature stone fireplace extending to one side to provide a space for the television, Villager cast iron wood burning stove and stone hearth. Double glazed window to the side and two double doors leading through to the superb Sunroom. Mirrored display arch to one wall, ceiling coving, two wall light points, two ceiling rose, telephone point and Tv Aerial point. Brass effect sockets and light switches. Oak flooring, stairs leading to the first floor, radiator, smoke and carbon monoxide detectors.

Sun Room:

26'3 x 9'7 (8.00m x 2.92m) Double glazed windows extending all the way around, with fitted blinds and double glazed door leading on the garden. Tiled floor, two radiators, two ceiling lights. Brass effect sockets and light switches.

Ground Floor WC:

8' x 4'6 (2.44m x 1.37m) Two piece white suite comprising: low flush wc, pedestal wash hand basin, frosted double glazed window to the side, radiator, ceiling coving, dado rail, wall light and door leading through to the study.

Study/4th Bedroom:

10'6 x 7'2 (3.20m x 2.18m) Double glazed window to the front, radiator, ceiling light and coving. Door leading through to the Utility Room.

Utility Room:

9'6 x 7'1 (2.90m x 2.16m) Wall and base storage, plumbed for two washing machines and space for a tumble dryer. Stainless steel sink unit with mixer tap, ceiling light, tiled floor and double glazed window. Door leading back through to the entrance porch and a separate door leading to the office/4th bedroom.

First Floor:

Split Level Landing:

With loft access, ceiling spotlights and smoke detector.

Main Bedroom:

14'1 x 12'6 (4.29m x 3.81m) Having a range of fitted wardrobes, overhead storage and dressing table. Double glazed windows to the side and rear, radiator, ceiling light and wood laminate flooring. Door through to the ensuite:

Ensuite:

11'1 x 6'9 (3.38m x 2.06m) Step and archway leading through into the ensuite: Three piece white suite comprising: low flush wc, vanity sink unit with fitted mirror and inset spotlights. Corner bath, fully tiled walls and floor. Chrome heated towel rail, inset ceiling spotlights and double glazed frosted window to the side.

Bedroom 2:

16'4 x 11' (4.98m x 3.35m) Fitted wardrobe and airing cupboard, radiator, double glazed window to the front and side. Ceiling light and dado rail. Door leading through to Jack & Jill Bathroom.

Bedroom 3:

10'4 x 9'1 (3.15m x 2.77m) Double glazed window to the rear, radiator, ceiling light and laminate wood flooring.

Jack & Jill Bathroom:

10'8 x 7' (3.25m x 2.13m) Four piece white suite comprising: free standing cast iron bath, fitted shower enclosure with electric 'mira sport' shower over, low flush wc and pedestal wash hand basin. Fully tiled walls and tiled flooring. Frosted double glazed window to the side, fitted corner glass shelf, radiator.

Outside:

The Gardens:

Designed by the current owners and brought to life by professional landscapers. With spacious lawn areas, a stream with timber bridge over leading to a fantastic pond with its vibrant ecosystem, varied depths, abundant vegetation and planting. Attracting diverse wildlife, several species of fish, insects and birds. A mixture of sun and shade and a lovely gentle waterfall circulation the water around.

To one side of the house is a good sized paved patio courtyard with Archway, raised beds and the boiler house.

To the front is a stone built "water well" that formed part of the original outside layout and the house that dated back nearly 200 years. Since then various additions have been built to provide the spacious family living it now is.

Driveway:

Access from Fluke Hall Lane onto private sweeping tree lined driveway. Bordered on either side by fencing and grass producing a colourful variety of flowers in spring. Stone pillars and entrance gate leads to the property. Block paved driveway providing ample off road parking. Further track leads to the ménage, stables building and land.

Equestrian Facilities:

- 40' metre x 20 metre fully fenced ménage with silica sand/plastic granule all weather surface, providing firm but responsive finish. It also has a drainage system two floodlights and water supply.

Block / brick rendered stable block comprising of:-

- Three 12' x 12' Stables with light and water, timber stable doors.
- One 12' x 11'6" Stable with light and water, timber stable door.
- One 17' x 12' Mare & Foal Box with light and water.
- One x 17' x 12' Shower room incorporating electric shower, power and light. Wall mounted (x9) rug racks and a further (x6) rug rails.
- 1 x "Feed" room with light.
- 1 x 'Tack' room base unit storage, power, light and washing machine.

There is a large 45' x 45' block built steel portal frame building with one end Yorkshire Boarded and open ended to provide storage for horse boxes, vehicles and muck trailer, which is divided in two by a block wall and could have further stables installed if required. Useful mezzanine level for extra storage, power and light. To the side of the stables/building is a small 'turn-out' paddock, ideal for farrier/vet visits. It is away from the main grazing and easy access.

NEIGHBOURING EQUESTRIAN OWNER HAS A LARGE INDOOR SCHOOLING ARENA AVAILABLE FOR HIRE.

Land:

Through a double timber gate into the main grazing areas. Extending to approximately 4 acres, with timber fencing, two water troughs (mains fed) and field shelter.

THERE IS POTENTIAL FOR RENTING FURTHER GRAZING LAND BY PRIVATE NEGOTIATION WITH NEIGHBOURING LAND OWNER.

HOLDING NUMBER: 21/161/0290

Utilities:

Mains water and electricity connected. Oil Central Heating (oil tank in rear Garden). Septic tank drainage installed.

Network / Broadband:

Please check the Ofcom website <https://checker.ofcom.org.uk/> for available internet providers and outdoor mobile networks available from UK's main providers (this excludes 5G). **Please Note:** These results are predictions and not guaranteed and may also differ, subject to circumstances, e.g. precise location & network outage.

Agents: Richard Turner & Son, Royal Oak Chambers, Main Street, High Bentham, Nr Lancaster, LA2 7HF. Tel: 015242 61444.

Through whom all offers and negotiations should be conducted.

N.B. Any electric or other appliances included have not been tested, neither have drains, heating, plumbing or electrical installations and all persons are recommended to carry out their own investigations before contract. All measurements quoted are approximate.

Please Note: In order for selling agents to comply with HM Revenue and Customs (HMRC) Anti-Money Laundering regulations we are now obliged to ask all purchasers to complete an Identification Verification Questionnaire form which will include provision of prescribed information (identity documentation etc.) and a search via Experian to verify information provided however please note the Experian search will NOT involve a credit search.

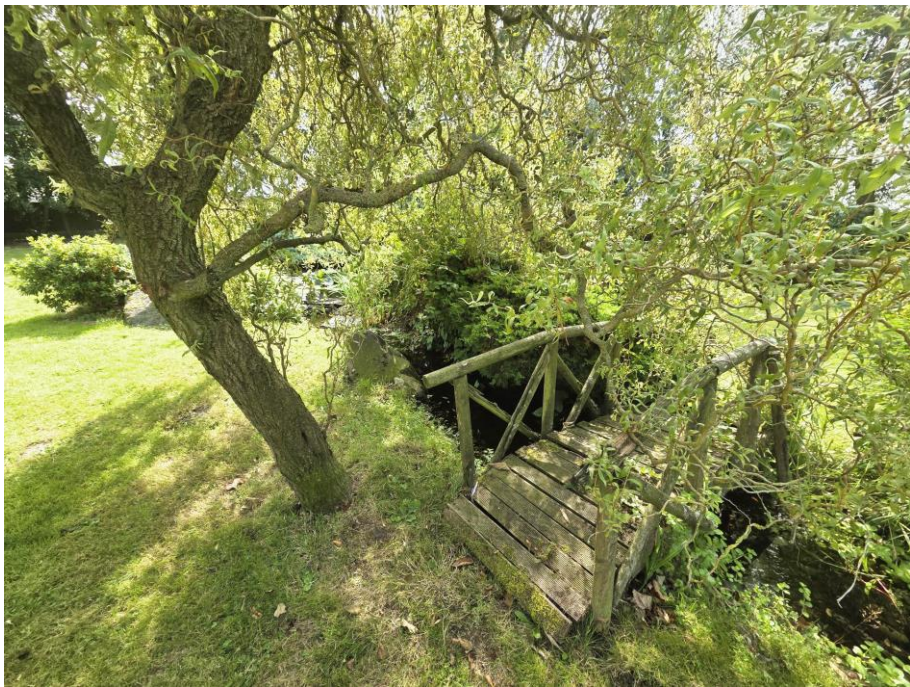




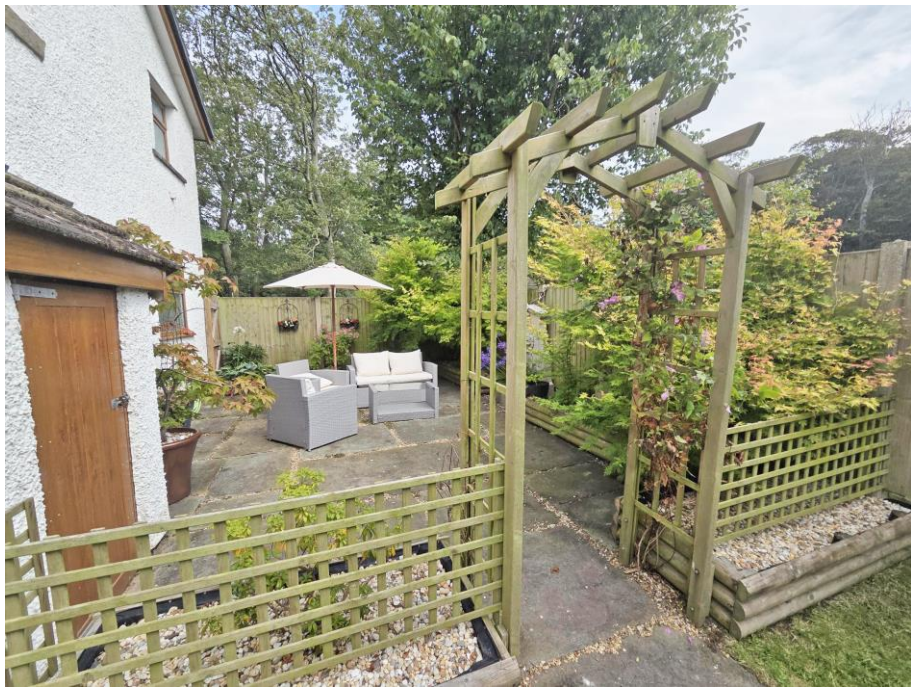




















FLOOR PLANS

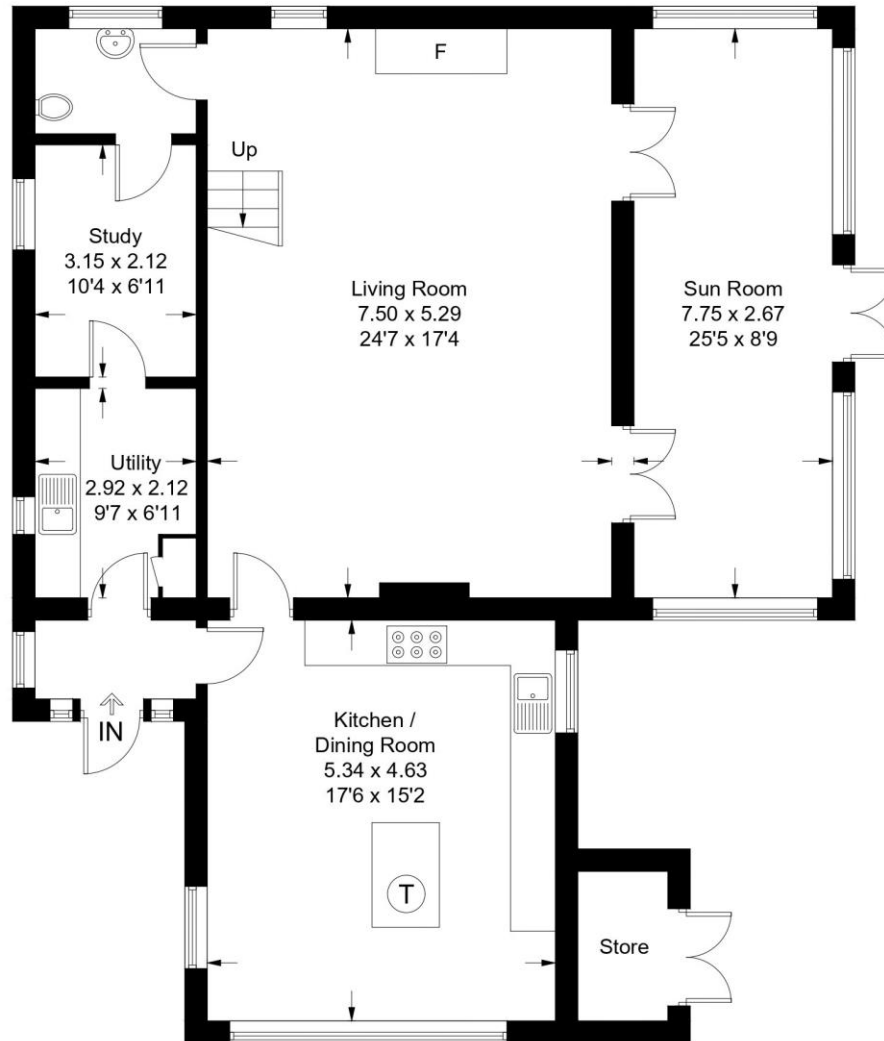
Sandside Cottage

Approximate Gross Internal Area = 169.2 sq m / 1821 sq ft

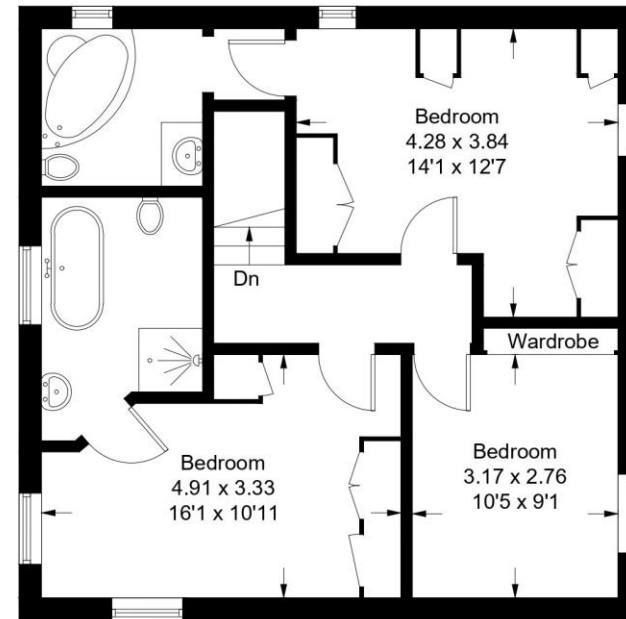
Store = 2.6 sq m / 28 sq ft

Total = 171.8 sq m / 1849 sq ft

Ground Floor



First Floor



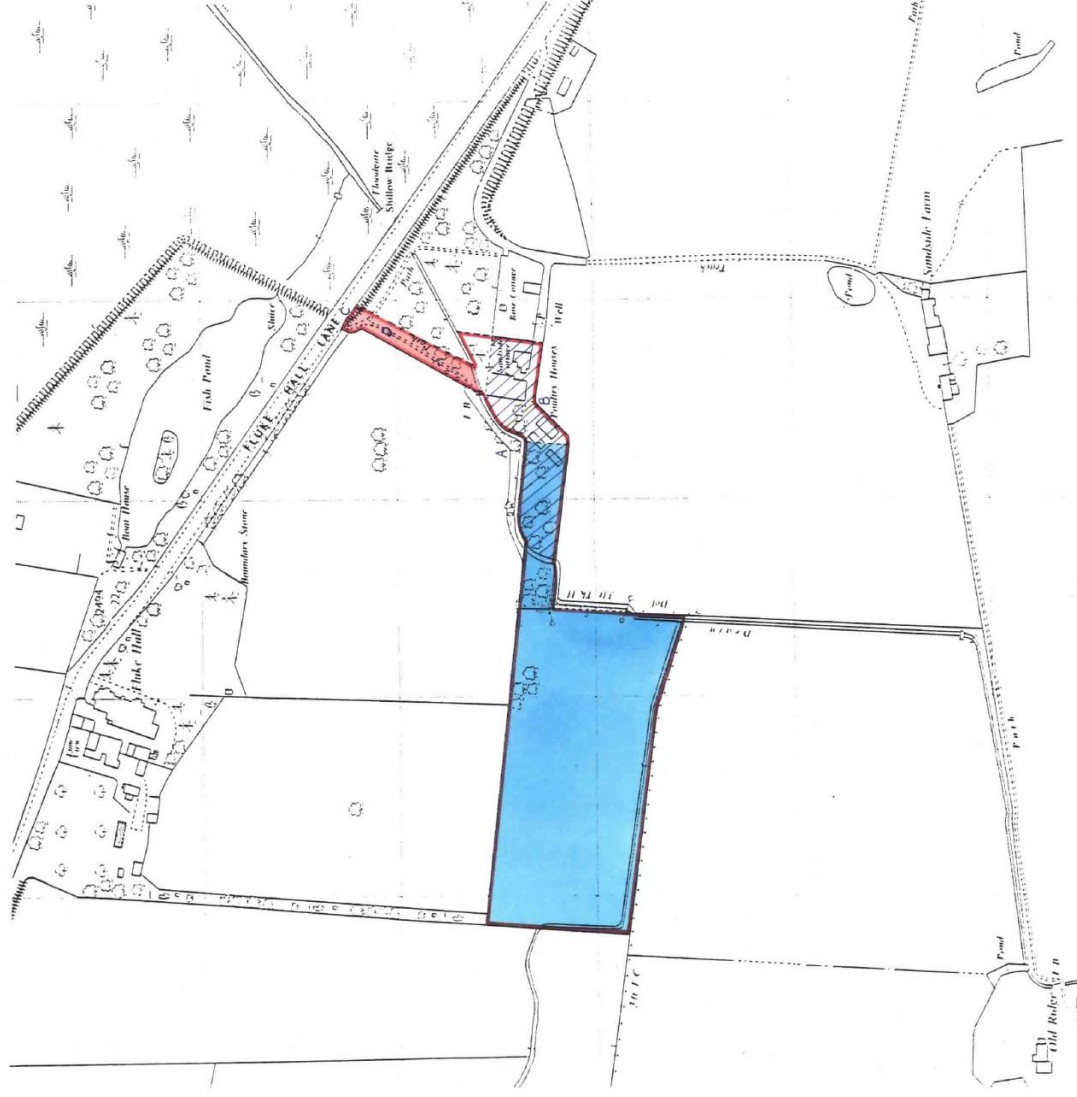
ENERGY PERFORMANCE CERTIFICATE

Energy Efficiency Rating		
	Current	Potential
Very energy efficient - lower running costs		
(92+) A		
(81-91) B		
(69-80) C		76
(55-68) D	56	
(39-54) E		
(21-38) F		
(1-20) G		
Not energy efficient - higher running costs		
England, Scotland & Wales		
EU Directive 2002/91/EC		

Illustration for identification purposes only, measurements are approximate, not to scale. Fourlabs.co © (ID1229828)

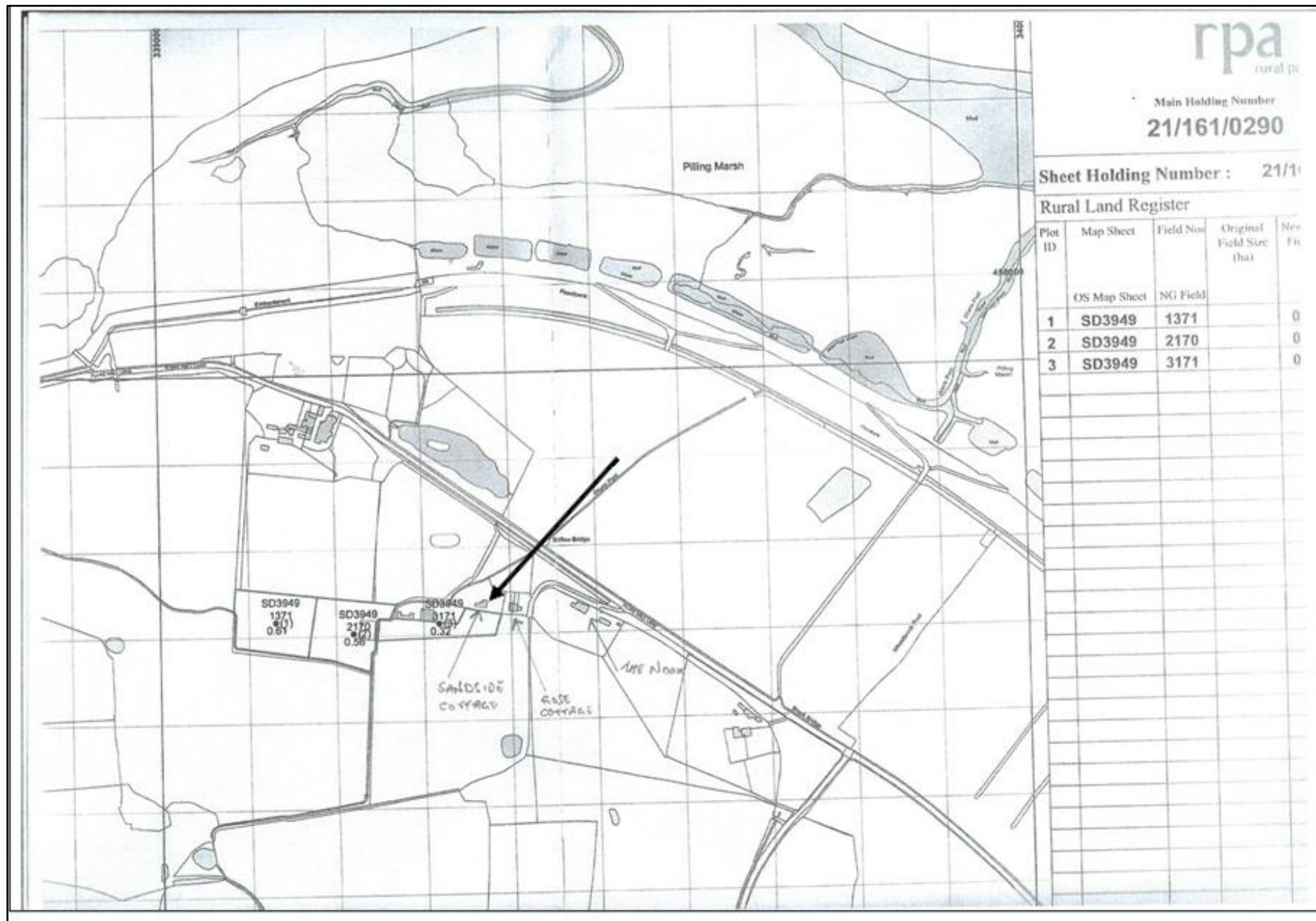
COPY TITLE PLAN

H.M. LAND REGISTRY		TITLE NUMBER	
LA 723263			
ORDNANCE SURVEY PLAN REFERENCE	SD 3949	Scale 1/2500	
COUNTY	LANCASHIRE	WYRE DISTRICT	(C) Crown Copyright



This official copy is incomplete without the preceding notes page.

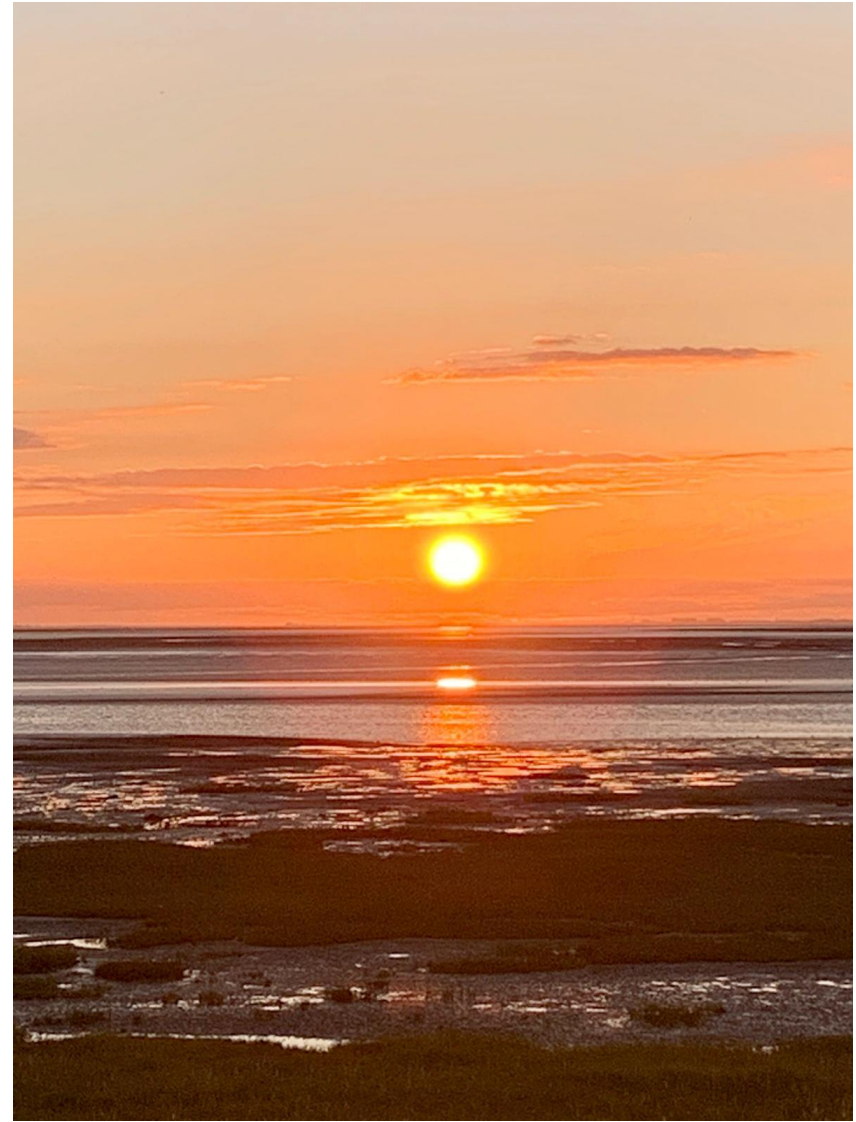
LOCATION PLAN



Sunrise



Sunset



Richard Turner & Son. Royal Oak Chambers, Main Street, BENTHAM, LA2 7HF. T: 015242 61444. E: property@rturner.co.uk
Richard Turner & Son. Old Sawley Grange, Gisburn Road, Sawley, CLITHEROE, BB7 4LH. T: 01200 441351. E: sawley@rturner.co.uk

MISREPRESENTATION ACT 1967:

Richard Turner & Son, for themselves and for the vendors or lessors of these properties whose agents they are, give notice that these particulars do not constitute any part of an offer or a contract. All statements contained in these particulars as to these properties are made without responsibility on the part of Richard Turner & Son or the vendors or lessors, none of the statements contained in these particulars as to these properties are to be relied on as statements or representations of fact and any intending purchasers or lessees must satisfy themselves by inspection or otherwise as to the correctness of each of the statements contained in these particulars. The vendor or lessors do not make or give and neither Richard Turner & Son nor any person in their employment, has any authority to make or give any representation of warranty whatever in relation to these properties.

