

hastings
INTERNATIONAL



Oxford Drive

£650,000

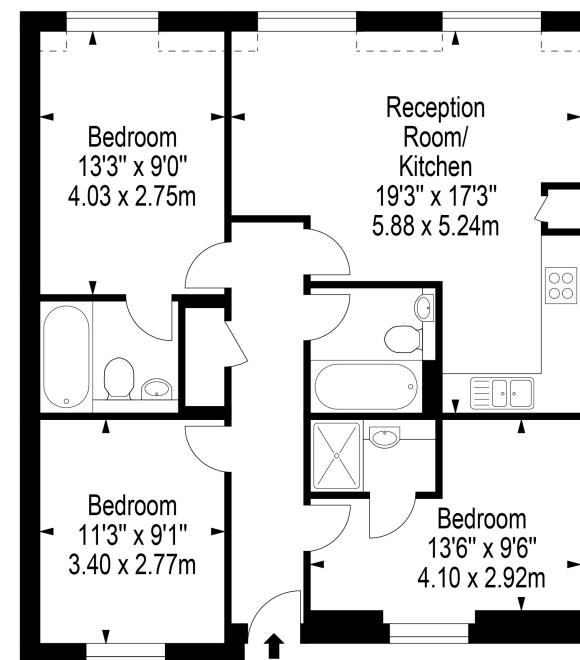
Oxford Drive, London SE1 2FB

A well presented three bedroom, three bathroom, fourth floor apartment with allocated parking located within a gated modern development moments from London Bridge, Borough Market, Bankside, Bermondsey Street and Hays Galleria.

This impressive dual aspect modern apartment comprises entrance hall with storage, reception room with dining area and open plan fitted kitchen with stone work tops and integrated appliances, master bedroom with en-suite bathroom, bedroom two with en-suite shower room, bedroom three and family bathroom. The apartment has the benefit of being chain free and comes with an allocated parking space within the gated area. Oxford Drive is a sought after modern development located just off Bermondsey Street enjoying unrivalled access to London Bridge, Borough Market, Bankside and the City.

- Oxford Drive SE1
- Three Bathrooms
- Fourth Floor
- Gated Development
- Three Bedrooms
- Dual Aspect Apartment
- Secure Allocated Parking
- Excellent Central Location

Oxford Drive, London, SE1 2FB



Fourth Floor

Approx Gross Internal Area **797 Sq Ft - 74.04 Sq M**

Floor Plan Supplied For Identification Purposes Only And May Not Be Accurate
Floor Plan by www.elegantmediasolution.com



