



Glebe Road, Letchworth Garden City, Hertfordshire. SG6 1DU





2 Bedroom Terraced House £340,000 Freehold

An immaculately presented two-bedroom property located within walking distance to Letchworth's train station and town centre. With an approx. 150ft garden, driveway and feature fireplace this property would make an ideal starter home or investment.

- Two double bedrooms
- Beautifully presented throughout
- Close to town centre
- Close to train station
- Feature fireplace
- Modern bathroom
- Large 150ft rear garden
- Freehold
- EPC rating E. Council tax band B



Entrance:

Front door to lounge.

Lounge:

Abt 12' 6" x 12' 4" (3.81m x 3.76m) Door to kitchen. Double glazed window to front. Feature working fireplace.

Kitchen:

Abt 9' 10" x 12' 6" (3.00m x 3.81m) Range of wall and base unit. Gas hob. Integrated oven. Stainless steel sink with mixer tap. Stone splash back. Original 1900's quarry floor tiles. Pantry. Door to rear garden.

Bedroom:

Abt 12' 4" x 12' 6" (3.76m x 3.81m) Double glazed window. Radiator. Cupboard under stairs. Feature fireplace. Built in double wardrobe.

Bathroom:

White three-piece bathroom suite comprising of panelled bath with shower over, pedestal wash basin and low W.C. Tiled floor. Cupboard over stairs.

Utility:

Open plan to bathroom. Worktop with plumbing and space for washer and dryer.

Bedroom Two:

Abt 11' 6" x 10' 0" (3.51m x 3.05m) Eaves storage. Window to front. Skylight over stairs.

Agents Note:

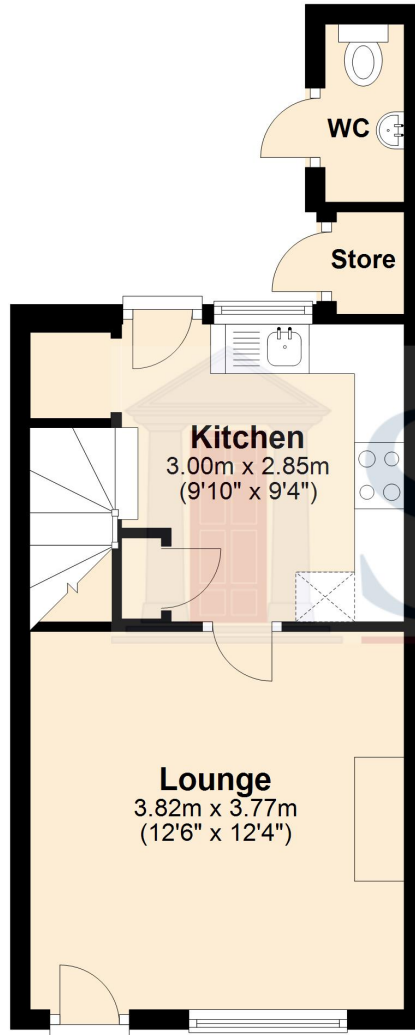
Draft details yet to be approved by the vendor and may be subject to change.



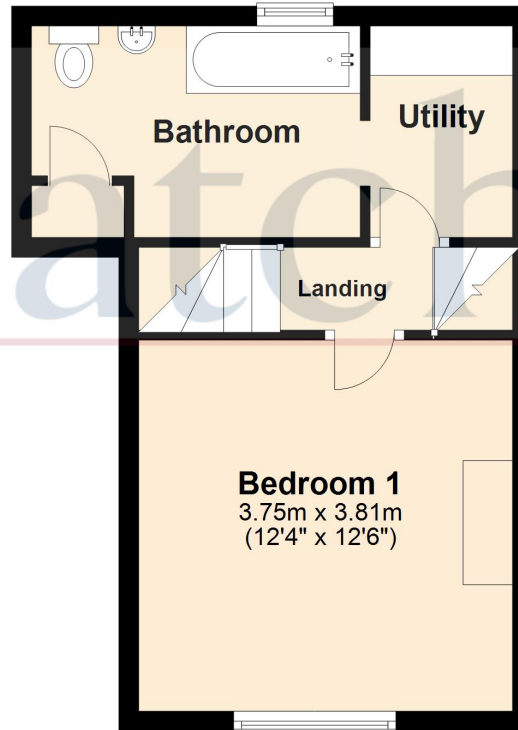


These particulars are a guide only and do not constitute an offer or a contract. The floor plan is for identification purposes only and not to scale. All measurements are approximate and should not be relied upon if ordering furniture, white goods and flooring etc. We have presented the property as we feel fairly describes it but before arranging a viewing or deciding to buy, should there be anything specific you would like to know about the property please enquire. Satchells have not tested any of the appliances or carried out any form of survey and advise you to carry out your own investigations on the state, condition, structure, services, title, tenure, and council tax band of the property. Some images may have been enhanced and the contents shown may not be included in the sale. Satchells routinely refer to 3rd party services for which we receive an income from their fee. If you would like us to refer you to one of these services please ask one of our staff who will pass your details on. We advise you check the availability of the property on the day of your viewing.

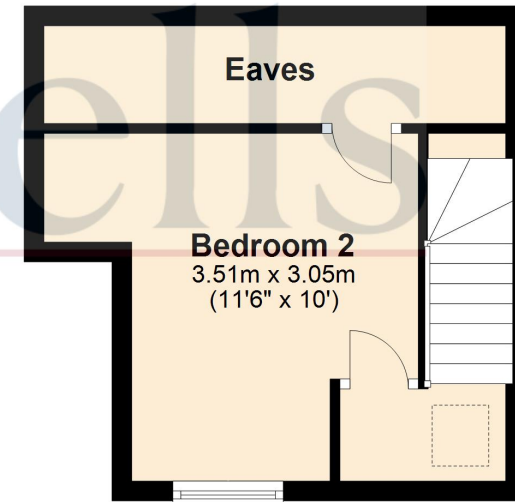
Ground Floor



First Floor



Second Floor



For illustrative purposes only - NOT TO SCALE - Measurements shown are approximate. The size and position of doors, windows, appliances and other features are approximate.
Plan produced using PlanUp.