



**2, The Old Orchard**  
Northwich CW9 6LH

**£430,000**

**[www.westates.co.uk](http://www.westates.co.uk)**  
**01606 331784**





An extended detached bungalow, set in large, mature gardens with bags of potential.

- Extended Detached Bungalow
- Accommodation Extending to 1,600ft<sup>2</sup>
- Three Reception Rooms
- Kitchen Dining Room & Utility Room
- Three Bedrooms
- Two Bath/Shower Rooms
- Large Corner Gardens
- Garage & Driveway

### Description

An extended, detached bungalow, set in large, mature corner gardens, with an over size garage and long driveway. The property extends to 1,600ft<sup>2</sup> and its versatile layout would lend itself for a variety of purposes. In the centre of the bungalow there is a long dual aspect lounge, kitchen dining room, utility room and small conservatory. There are five other rooms, which can either be used as bedrooms or reception rooms, in addition there is a bathroom and separate shower room.



**Location**

Antrobus is small rural village, located midway between the larger towns of Northwich and Stockton Heath. The village has its own Post Office and general stores and there is a well regarded primary school, currently rated good by Ofsted. There are several popular pubs in and around the village. Railway connections are available in Northwich and Warrington and the M56 junction 10 is only 2 miles away.

**Tenure**

FREEHOLD

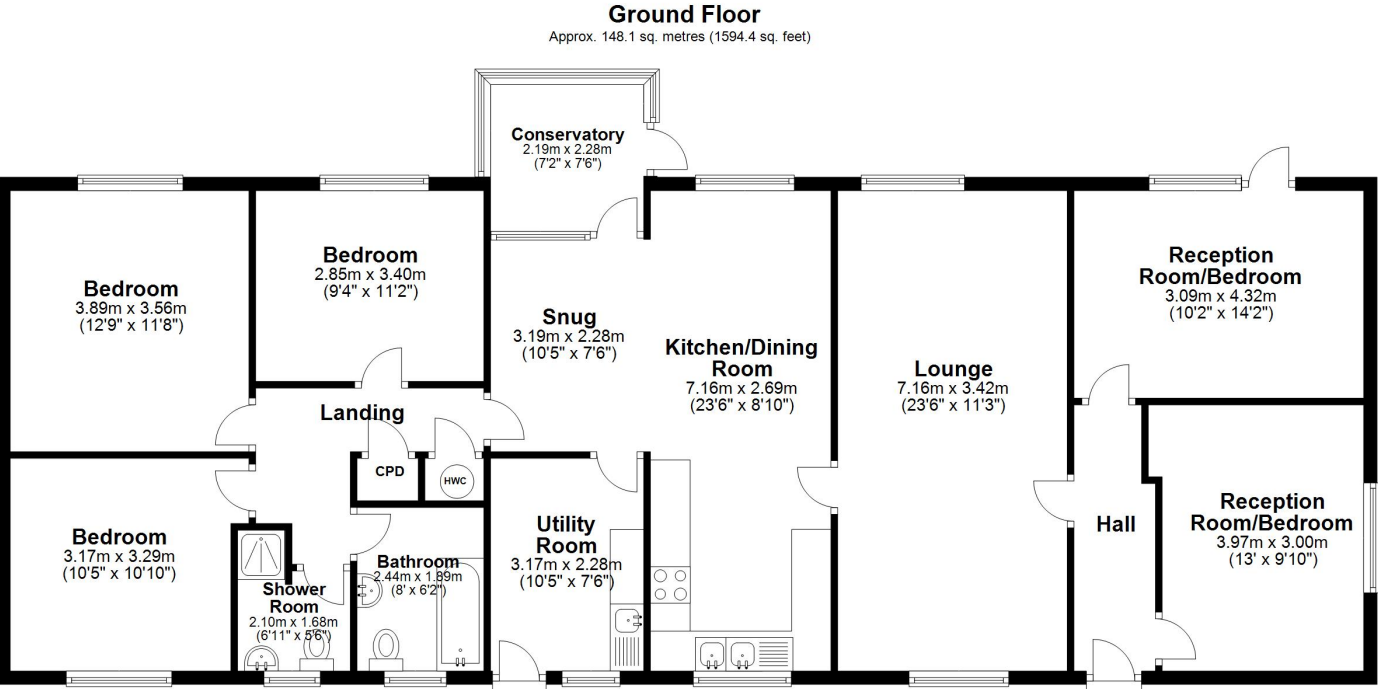
**EPC Rating: D**

**Important Notes**

Type Here







Total area: approx. 148.1 sq. metres (1594.4 sq. feet)



These particulars, whilst believed to be accurate are set out as a general outline only for guidance and do not constitute any part of an offer or contract. Intending purchasers should not rely on them as statements of representation of fact, but must satisfy themselves by inspection or otherwise as to their accuracy. All measurements quoted are approximate. We are unable to confirm the working order of any fixtures and fittings including appliances that are included in these particulars. No person in this firm's employment has the authority to make or give any representation or warranty in respect of the property.



**Boomin**