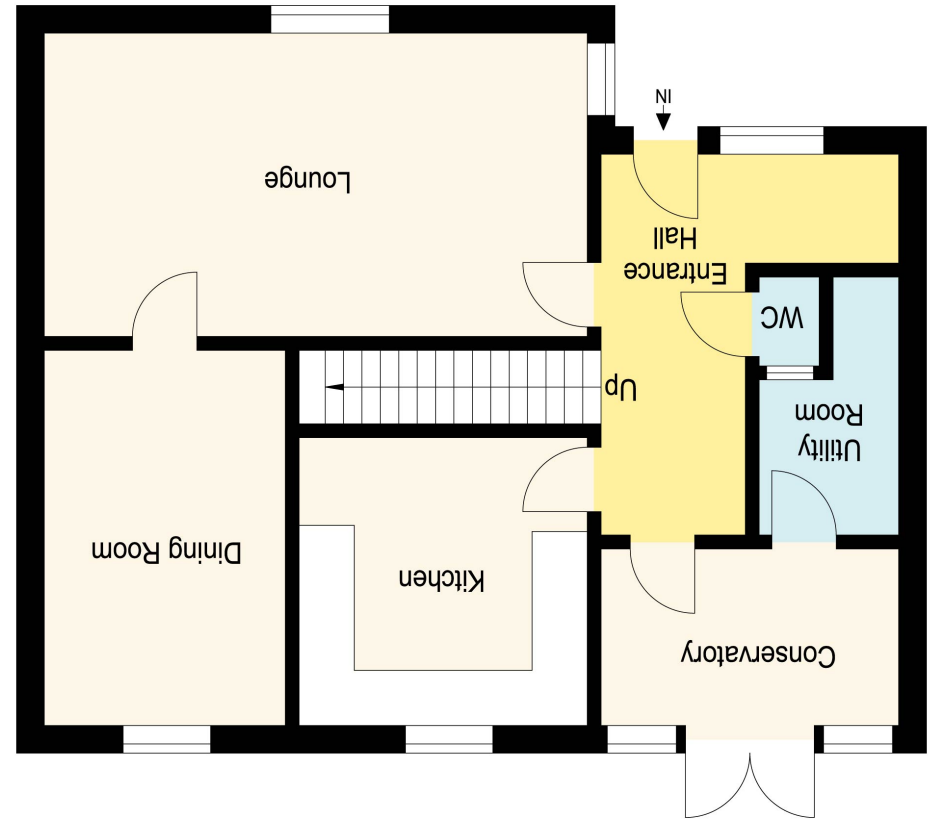


Lingfield Road

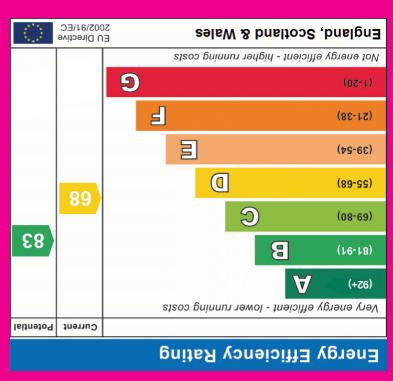
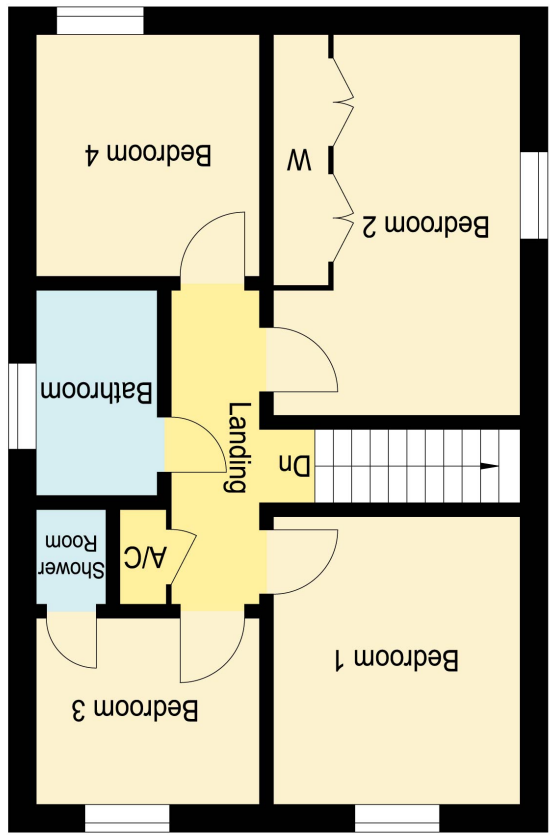
Illustration for identification purposes only, measurements are approximate, not to scale.



Ground Floor



First Floor





## Description

Stunning Four Bedroom Detached Family Home - Situated in Martins Wood Stevenage, the property benefits from four good sized bedrooms, good sized plot, modern throughout, separate dining area, conservatory, cloakroom, spacious lounge and is being sold chain free.



Entrance Hallway - A welcoming entrance hallway with doors leading to the lounge, cloakroom, kitchen and conservatory, radiator.

Cloakroom - 1.70m x 0.84m (5'7" x 2'9") - Porcelain wash hand basin with mixer tap and vanity cupboard below, low level w/c, marble effect tiles, vinyl flooring, extractor fan.

Lounge - 3.28m x 5.94m (10'9" x 19'6") - Bright and open lounge space with double glazed windows to front and side aspect, feature fireplace, tv points, radiator, door leading to dining room.

Kitchen - 2.92m x 3.07m (9'7" x 10'1") - Modern kitchen space comprising of base and eye level white gloss units, rolled edge worktops, tiled splashbacks, stainless steel sink with mixer tap, John Lewis dual oven with matching four ringed gas hob, integrated dishwasher and fridge. double glazed window to rear aspect, tiled flooring.



Dining Room - 2.90m x 4.06m (9'6" x 13'4") - Separate dining area with wood effect laminate flooring, double glazed window to rear aspect, radiator, understairs cupboard.

Conservatory - 3.53m x 2.74m (11'7" x 9'0") - A further reception room, enclosed conservatory roof, grey laminate flooring, radiator, double glazed sliding doors leading to the rear garden, door leading to utility room.

Utility Room - 3.18m x 1.45m (10'5" x 4'9") - Wall mounted boiler, space for multiple undercounter fridge/freezers, washing machine and tumble dryer.

First Floor Landing - Airing cupboard housing hot water cylinder, doors leading to all bedrooms and family bathroom.



Bedroom One - 3.10m x 3.20m (10'2" x 10'6") - Double bedroom, carpeted, double glazed window to side aspect, radiator, ample space for a large wardrobe.

Bedroom Two - 3.28m x 3.18m (10'9" x 10'5") - A further double bedroom, double glazed window to front aspect, fitted wardrobe, carpeted, radiator, storage cupboard.

Family Bathroom - 2.03m x 1.63m (6'8" x 5'4") - Three piece suite comprising of a panelled bath with shower head attachment, wash hand basin, low level w/c, variety of vanity cupboards, tiled throughout, vinyl flooring, frosted double glazed window to rear aspect, heated towel rail.

Bedroom Three - 2.62m x 2.13m (8'7" x 7'0") - Wood effect laminate flooring, double glazed window to side aspect, radiator, single tiled shower cubical.

