

Castle View, Clitheroe. BB7 2DT

£259,950 Leasehold

FOR SALE



stones young
sales & lettings

Clitheroe
50, Moor Lane, Clitheroe, BB7 1AJ

01200 408408
clitheroe@stonesyoung.co.uk

PROPERTY DESCRIPTION

This impressive sized garden fronted property is attractively situated on Castle View, a much sought after location within superb walking distance to the town centre, train station and its array of amenities and with lovely front open aspects towards Clitheroe Castle. This fantastic home is situated over three floors and has been lovingly renovated by the current owners providing beautiful spacious accommodation with all the modern comforts and luxuries coupled with attractive internal fixtures and fittings. The ground floor boasts two generous light and airy reception rooms and hallway with a recently installed modern fitted kitchen open to the rear with an array of integrated appliances. There are three bedrooms on the first floor off the sizeable split level landing, two of which are excellent doubles in size and a well appointed three piece modern shower room with deluxe double walk-in shower enclosure. The second floor further provides an additional third double bedroom with stunning elevated outlooks, a really useful flexible space to enjoy.

Externally there is a forecourt garden area with gate, stone wall, steps and pathway with a well stocked planting area with attractive bedding plants and beautiful front views looking over to Clitheroe Castle and its grounds. To the rear is an excellent private enclosed stone paved patio garden with raised stone planted borders with mature shrubs and trees which is not overlooked. Timber storage shed with plumbing for washing machine and power, stone boundary wall, external lighting and rear gate access. An early internal inspection is essential to fully appreciate all that this property has to offer.

FEATURES

- Stunning Garden Fronted Stonebuilt Terrace
- Beautifully Renovated - Modern Internal Finish
- 4 Excellent Bedrooms over 3 Floors
- Recently Installed Modern Kitchen & Appliances
- Fantastic Lounge & Dining Room
- Modern 3-pce Shower Room & Spacious Landing
- Attractive Rear Patio; Elevated Front Views
- Favoured Location Close To Town Centre



ROOM DESCRIPTIONS

Ground Floor

Entrance Hallway

External wood front door, archway with staircase leading to first floor, laminate flooring, panelled radiator.

Lounge

15'1" x 11'5" into bay window
Attractive fireplace surround and hearth housing pebble effect electric fire, panelled radiator, uPVC double glazed feature bay window, laminate flooring, television point, superb aspect across towards Clitheroe Castle.

Living /Dining Room

14'6" x 12'1"
Impressive decorative feature inset fireplace with large stone mantel over and lighting within, cove cornicing, panelled radiator, laminate flooring, telephone point, uPVC double glazed window, open through to kitchen.

Kitchen

14'3" x 7'7"
Modern cream fitted kitchen with attractive range of high gloss wall, base and drawer units with wood style laminate working surfaces, tiled splash back, under unit LED lighting, 1½ bowl stainless steel sink drainer unit with mixer tap, integrated eye level double oven and grill, integrated dishwasher, fridge and freezer, cupboard housing combination gas central heating boiler, 5-ring stainless steel gas hob with extractor filter canopy over, inset with tiled surround and feature stone beam over, laminate flooring, panelled radiator, uPVC double glazed window, wood glazed external rear door, under stairs storage area and built-in cupboard.

First Floor

Landing

Attractive split level spacious area with wood spindle balustrade, original feature glazed sky light, panelled radiator, built-in storage cupboard, spindle staircase leading to second floor.

Bedroom One (front)

15'6" x 12'11"
Fantastic spacious double bedroom with carpet flooring, panelled radiator, 2x uPVC double glazed windows with beautiful views and aspects elevated across towards Clitheroe Castle.

Bedroom Two (rear)

15'0" x 9'7"
Excellent double bedroom with carpet flooring, panelled radiator, uPVC double glazed window.

Bedroom Four (rear)

8'6" x 7'9"
Excellent single room, flexible useful space with carpet flooring, panelled radiator, uPVC double glazed window.

Shower Room

Modern 3-pce white suite comprising excellent double walk-in shower enclosure with thermostatic overhead shower and fixed glazed screen, pedestal wash basin, low level w.c., uPVC double glazed window, part tiled walls, chrome ladder style radiator, tile effect vinyl flooring.

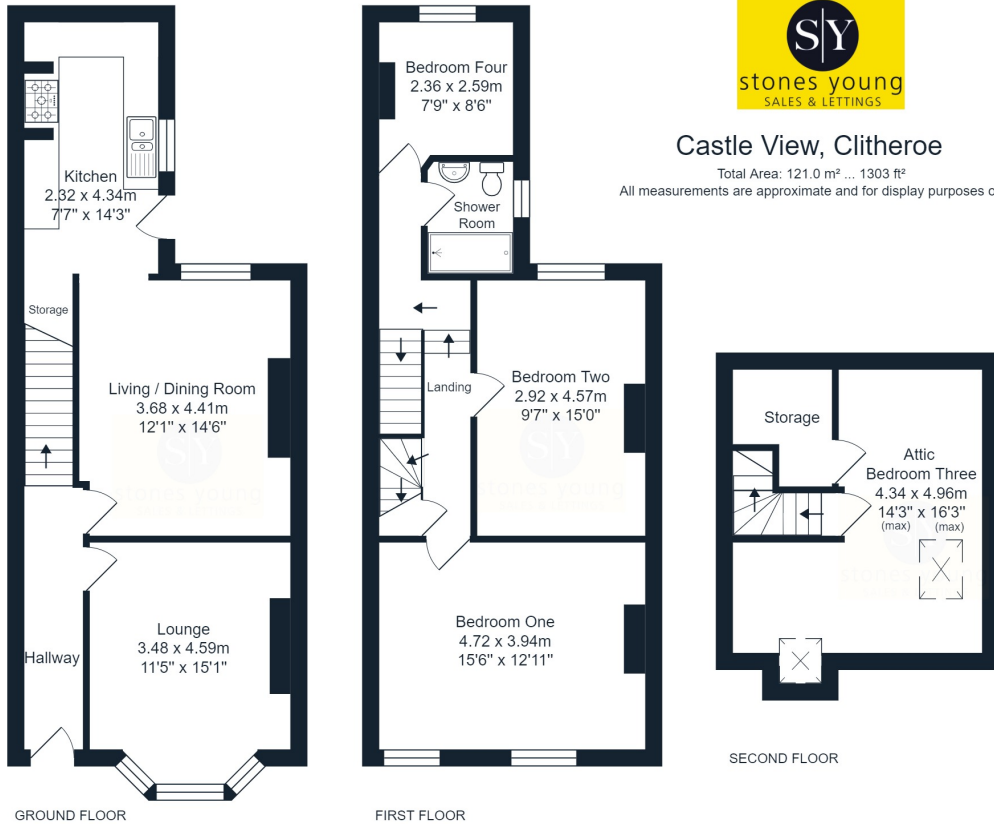
Second Floor

Attic Bedroom Three

16'3" max to 10'2" min x 14'3" max to 7'2" min (some limited head room)
Superb L-shaped room with laminate flooring, 2x Velux windows with fabulous elevated roof top views and over towards Clitheroe Castle, built-in storage cupboard, panelled radiator.

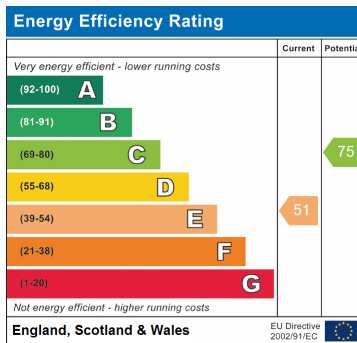


FLOORPLAN & EPC



Castle View, Clitheroe

Total Area: 121.0 m² ... 1303 ft²
 All measurements are approximate and for display purposes only.



These particulars are intended to give a fair and reliable description of the property but no responsibility for any inaccuracy or error can be accepted and do not constitute an offer or contract. We have not tested any services or appliances (including central heating if fitted) referred to in these particulars and the purchasers are advised to satisfy themselves as to the working order and condition. If a property is unoccupied at any time there may be reconnection charges for any switched off/disconnected or drained services or appliances. All measurements are approximate.

