



Three Bedroom Semi-Detached House  
Hurstwood, Chatham, Kent, ME5 0XH

Guide Price £350,000  
Freehold

# Hurstwood, Chatham, Kent, ME5 0XH

Guide Price £350,000

Freehold

## Description

**\*\*Guide Price £350,000 - £375,000\*\***

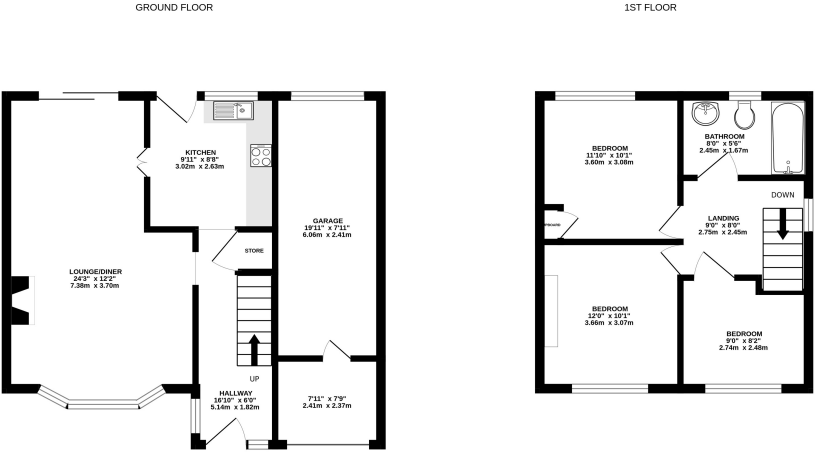
This stunning three-bedroom semi-detached home perfectly combines stylish interiors with huge future potential, making it an exceptional opportunity for families and professionals alike. With scope to extend to the side, rear, or loft (STPP), this property not only offers immediate comfort but also the chance to create your dream home over time. From the moment you arrive, the smart frontage with parking for up to three cars and a double-length garage sets the tone for what’s to come. Step inside and you’ll find a home that, in our opinion, has been finished to an excellent standard throughout—simply unpack, move in, and start enjoying. The welcoming entrance hallway leads you into a spacious open-plan lounge and dining area, bathed in natural light and designed for modern living. The kitchen flows directly onto a raised deck, an idyllic setting to unwind or entertain while taking in far-reaching views. Whether it’s morning coffee or summer evenings with friends, this outdoor space is a real highlight. Upstairs, there are three generously sized bedrooms, all beautifully presented. The third bedroom is currently styled as a walk-in wardrobe, adding a touch of luxury, while the recently refurbished family bathroom offers a sleek and contemporary finish. The garden is a true showstopper. Measuring approximately 29.5m x 8.25m and enjoying a North West aspect, it provides exceptional outdoor space for children to play, keen gardeners to flourish, or simply for extending the home to create even more living space. With stylish interiors, generous proportions, and unrivalled potential, this home offers the best of both worlds—a move-in ready haven today, and a home with endless possibilities for tomorrow.

## Key Features

- Stylish three-bedroom semi-detached home
- Off-street parking for two to three cars plus a double-length garage
- Excellent condition – move straight in
- Potential to extend to the side, rear, or loft (STPP)
- Far-reaching views from the raised decked area, ideal for entertaining or relaxing
- Ofsted Good rated Infant and Junior school within walking distance
- Easy access to motorway and transport links
- North West facing rear garden measuring approx. 29.5m x 8.25m

## Local Area

Chatham is located within the Medway towns with good transfer links by rail into Central London, Ebbsfleet International and the South Coast. Medway provides excellent road connections to the M2/M25 and M20, it also boasts excellent Primary, Secondary and Grammar Schools. Various local amenities include a bustling Town Centre, with the popular Pentagon Shopping Centre, various retail shops, restaurants, cafes, pubs and supermarkets. The Historic Dockyard, Capstone Ski and Snowboard Centre are all a stones thrown away. if football is high on your agenda Gillingham FC is nearby as well as Rochester Castle and Cathedral.



Whilst every attempt has been made to ensure the accuracy of the floorplan contained herein, measurements of doors, windows, rooms and any other items are approximate and no responsibility is taken for any error, omission or mis-statement. This plan is for illustrative purposes only and should be used as such by any prospective purchaser. The services, systems and appliances shown have not been tested and no guarantee is given to their operability or efficiency can be given. Made with Metreplan 6.0.2025

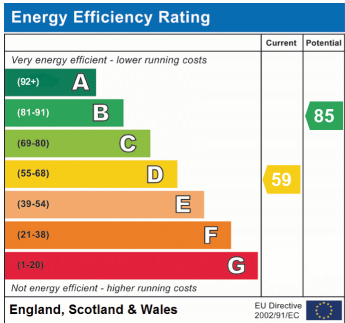
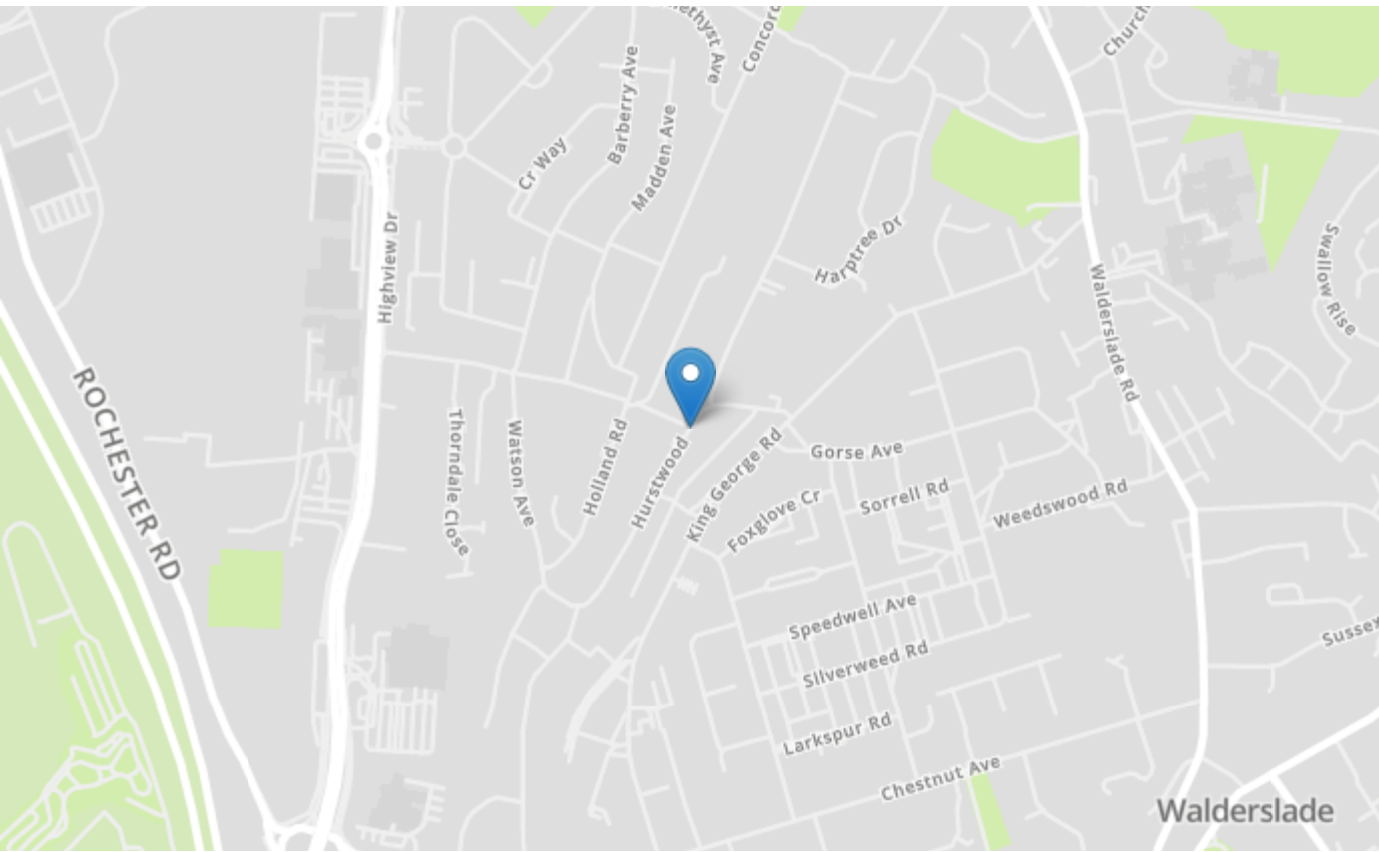






## Property Location

Hurstwood, Chatham, Kent, ME5 0XH



Tenure	Freehold
Lease Term	N/A
Ground Rent	N/A
Service Charge	N/A
Local Authority	Medway Council
Council Tax	Band C

## haus Estate Agents

26, London Road  
Gillingham  
Kent  
ME8 6YX  
Tel: 01634 848883 Email:  
hello@haustateagents.co.uk

### Agent Notes

These particulars do not form part of an offer or contract and must not be relied upon as statements or representation of fact. The seller does not make or give nor do our employees or haus Estate Agents have authority to make or give any representation or warranty to the property. It should not be assumed that the property has all necessary planning, building regulation or other consents and we have not tested any services, equipment, or facilities. All photographs, measurements, floorplans and distances referred to are given as a guide only and should not be relied upon for the purchase of carpets or any other fixtures or fittings. References to tenure, service charges and ground rent (where applicable) as well as council tax are based on information supplied by the seller. The Buyer should verify all information themselves by inspection or otherwise prior to a legal commitment to purchase. The copyright of all details, photographs and floorplans remains exclusive to haus Estate Agents. If you require clarification or further information on any points, please contact us, especially if you are travelling some distance to view.