

SOLE
AGENT

Petit Maison

Les Huriaux Farm | Les Huriaux, St Martin | GY4 6SY

Charming and immaculate one bedroom semi detached house situated in the lanes of St Martin close to local amenities. Benefiting from a private enclosed rear courtyard, gravelled front area and allocated parking for two cars this property needs to be viewed to appreciate all it has to offer. Regret no smokers, children or dogs. One cat may be considered. Available by negotiation.

1 BEDROOM

1 BATHROOM

1 RECEPTION

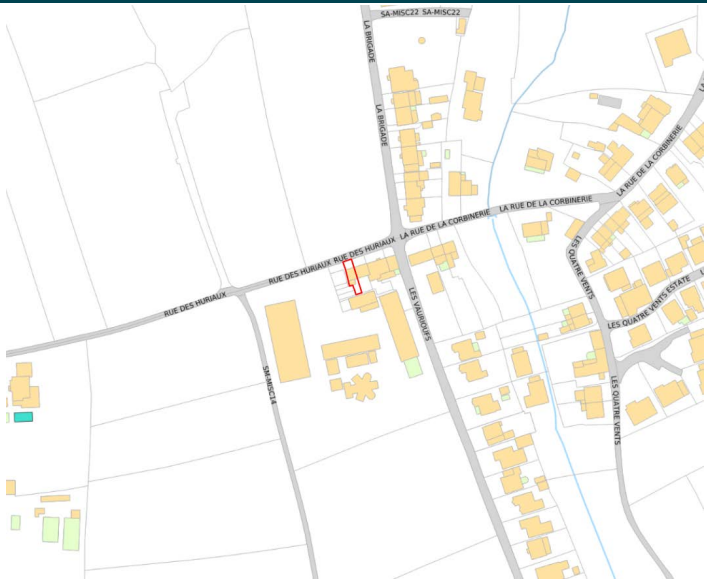
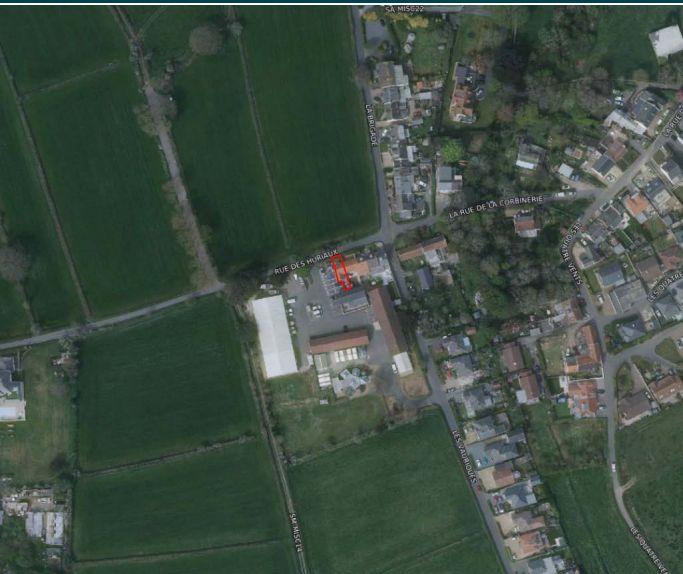
£1,850 pcm

Shields
& Rutland

PHOTOS



SPECIFICATIONS



Entrance Hallway

6' 4" x 4' 2" (1.93m x 1.27m)

Lounge

15' 11" x 13' 9" (4.85m x 4.20m)

Kitchen

8' 1" x 7' 8" (2.47m x 2.33m)

First Floor Landing

9' 11" x 3' 3" (3.03m x 0.99m)

Bedroom

15' 9" x 10' 3" (4.79m x 3.12m)

Bathroom

8' x 7' 7" (2.43m x 2.32m)

Garden

To the rear is a small courtyard garden with a shed.

PRICE INCLUDES

Curtains/blinds as fitted
Carpets/flooring as fitted
Light fittings

SPECIAL FEATURES

- Private courtyard
- Parking for 2 cars
- Immaculate throughout

SERVICES

Mains water, electricity and drainage.

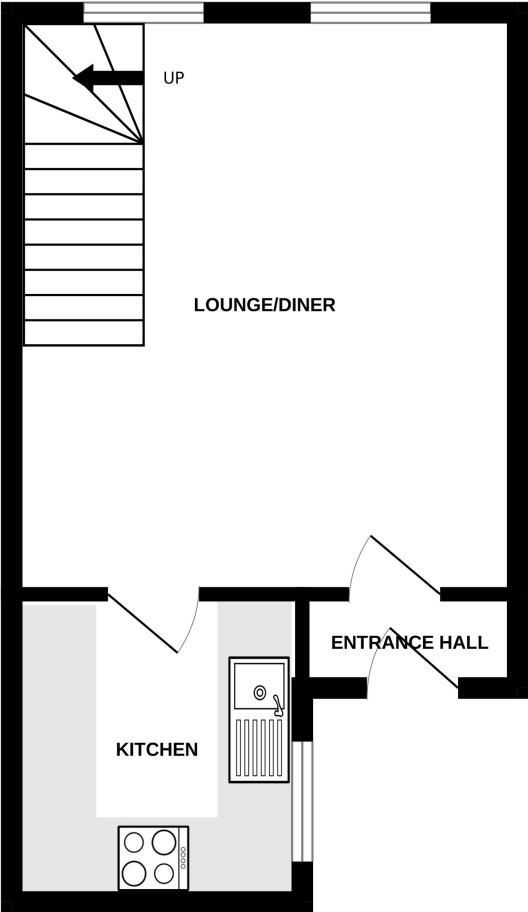
APPLIANCES INCLUDED

Hotpoint double oven
Induction hob
Extractor fan
Hotpoint washing machine
Dishwasher
Fridge/freezer

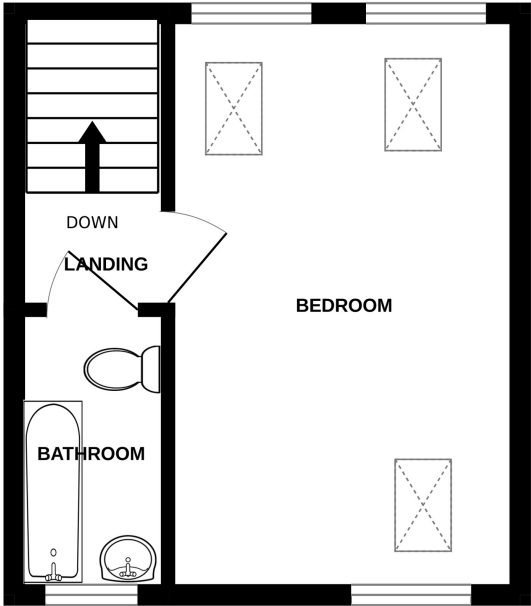
SCHOOL CATCHMENT

n/a

GROUND FLOOR



1ST FLOOR



PETIT MAISON

Whilst every attempt has been made to ensure the accuracy of the floorplan contained here, measurements of doors, windows, rooms and any other items are approximate and no responsibility is taken for any error, omission or mis-statement. This plan is for illustrative purposes only and should be used as such by any prospective purchaser. The services, systems and appliances shown have not been tested and no guarantee as to their operability or efficiency can be given.
Made with Metropix ©2025