



2 Park View, Baldrine Park, Baldrine, Isle of Man. IM4 6DE

Well presented detached true bungalow with superb open aspect to front which has undergone recent renovation including new kitchen, new bathroom, new boiler and predominantly new windows.



£450,000 Freehold

PROPERTY DESCRIPTION

This spacious detached true bungalow in Baldrine Park offers a modern and comfortable living experience. Recently undergoing almost a full modernisation project, the property now boasts a sleek new kitchen, a contemporary bathroom, a new boiler for added efficiency and predominantly new windows that flood the home with natural light. With three generously sized double bedrooms, there's plenty of space for family or guests.

This home enjoys an open aspect to the front, providing beautiful, uninterrupted views over surrounding farmland towards Snaefell creating a tranquil atmosphere. The property also benefits from a driveway leading to an integral garage, offering convenient parking and additional storage space. To the rear, a large, well-maintained private lawned garden offers a peaceful outdoor retreat, ideal for entertaining or relaxing.

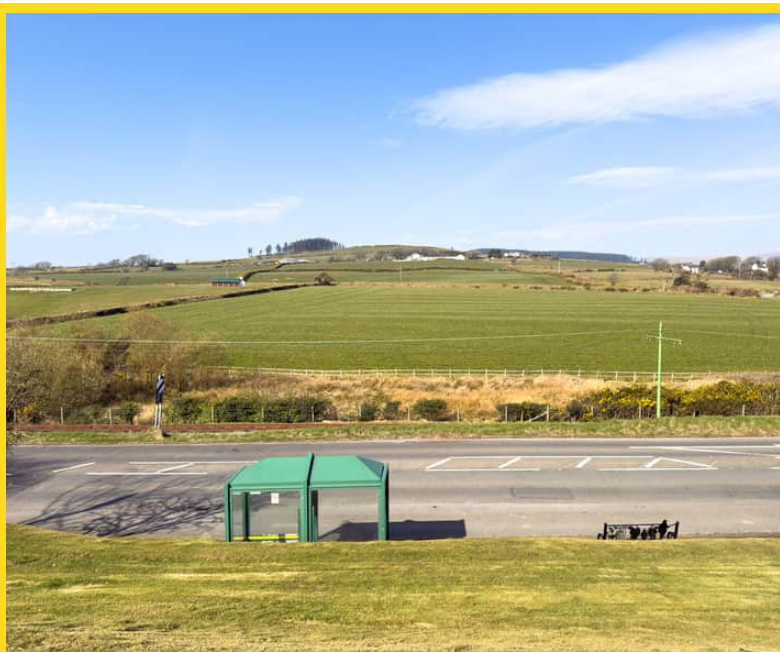
This bungalow combines modern upgrades with a semi-rural setting, making it a perfect choice for those looking for a comfortable and private home in a picturesque location.

FEATURES

- Detached True Bungalow
- Superb Open Aspect to Front
- New Kitchen, Bathroom and Oil Fired Boiler
- Open Plan Lounge/Diner with Impressive Views
- 3 Double Bedrooms plus New Bathroom
- Utility Room/Sun Room
- Integral Garage
- Private Lawned Garden To Rear

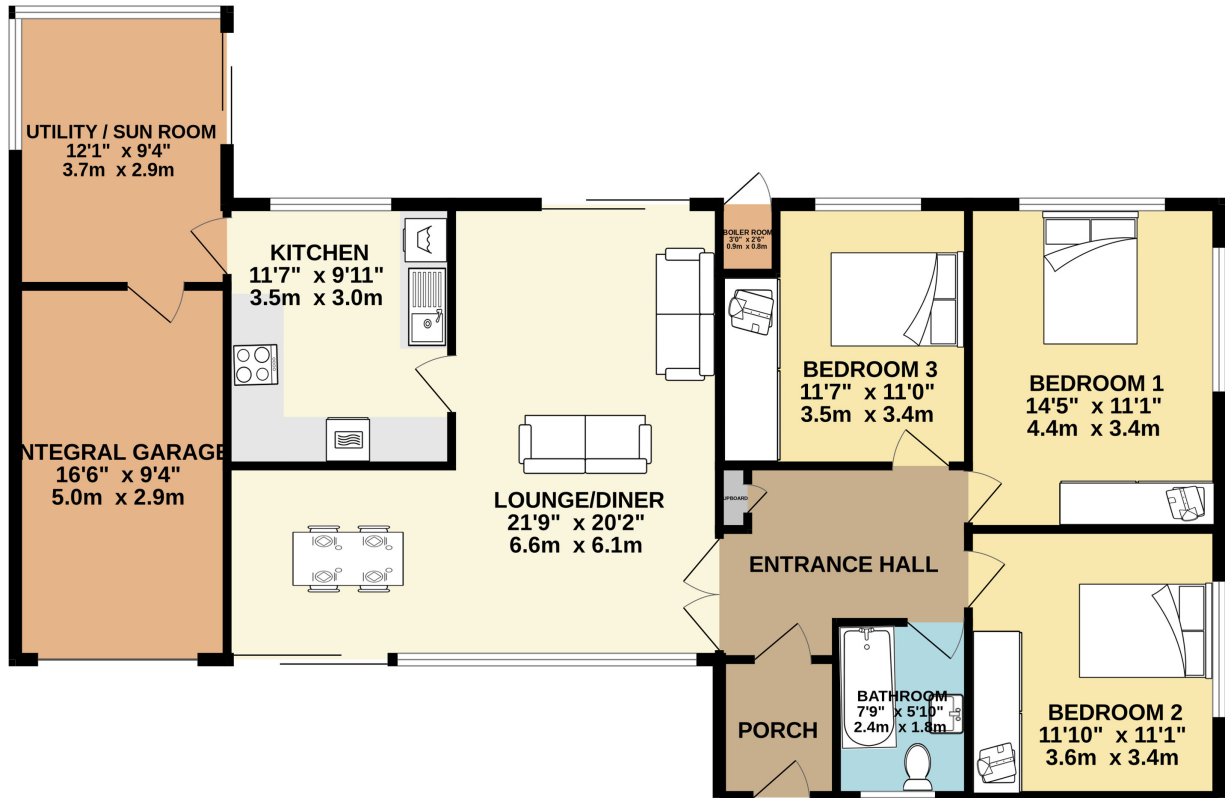


Property Images



FLOORPLAN

GROUND FLOOR 1287 sq.ft. (119.5 sq.m.) approx.



TOTAL FLOOR AREA: 1287 sq.ft. (119.5 sq.m.) approx.
Whilst every attempt has been made to ensure the accuracy of the floorplan contained here, measurements of doors, windows, rooms and any other items are approximate and no responsibility is taken for any error, omission or mis-statement. This plan is for illustrative purposes only and should be used as such by any prospective purchaser. The services, systems and appliances shown have not been tested and no guarantee as to their operability or efficiency can be given.
Made with Metropix ©2025

DISCLAIMER: Whilst Manxmove Ltd believe that these details are correct, neither Manxmove Ltd or their clients guarantee their accuracy in any way. Consequently, these details are not to be used to form part of any legally binding contract. Prospective purchasers or tenants are advised to visit this property to satisfy themselves as to the correctness of these details. Please note, we use wide angle camera lenses in order to show as much of each room as possible. This is not intended to mislead any prospective purchasers or tenants in any way and an honest verbal description is always available prior to viewing if required.