



Jackmans Place, Letchworth Garden City, Hertfordshire, SG6 1RH

£385,000

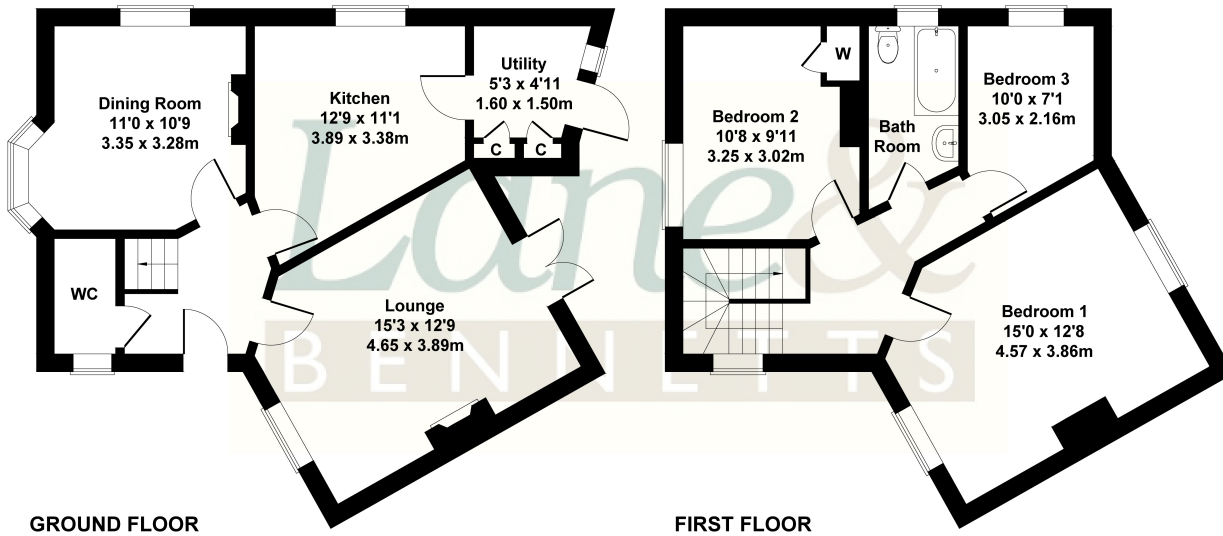
Lane & Bennetts proudly launch to the market this eclectic, characterful and vibrant home close to town, station, green open spaces with great access to neighbouring towns and amenities. The current owner has added a superb utility room and maintained the property beautifully. French doors open out from the dual aspect lounge room onto a beautifully styled, covered 'sun trap' patio, enjoying the mature South-facing garden. The dual aspect dining room / study / playroom offers a fireplace, bay window and bespoke 'half' shutters allowing light while offering privacy. There is also a useful downstairs WC with cloaks space. To the first floor, the dual aspect master bedroom is sizeable, overlooking front and rear gardens. There is a second spacious double bedroom and a third bedroom, perfect as single room, study or nursery. The bathroom (with shower over) has been recently modernised and on the landing there is ladder access to the cavernous loft space. To the front of property there is off-road parking for one vehicle, with space to extend (STP). The gated path to the updated front door of the property sets the 'cottage' scene for this lovely home. The well-cared for rear gardens are bordered with mature planting and an archway leads to the allotment area and handy shed.



- THREE BEDROOM HOME
- TWO RECEPTION ROOMS
- KITCHEN / DINER
- DUAL ASPECT LOUNGE ROOM
- FRENCH DOORS TO COVERED PATIO
- UTILITY & DOWNSTAIRS CLOAKROOM
- OFF-ROAD PARKING
- CHARACTERFUL FEATURES THROUGHOUT
- ECLECTICALLY STYLED
- LESS THAN A MILE TO TOWN & STATION

### 32 Jackmans Place

Approximate Gross Internal Area  
1129 sq ft - 105 sq m



Not to Scale. Produced by The Plan Portal 2024  
For Illustrative Purposes Only.

