

HARTWOOD LOFTS

BROCKENHURST

BAYVIEW

Welcome Home



CITY STYLE COUNTRY LOCATION

New builds are rare in the New Forest. This National Park is right on the doorstep of these seven urban-inspired, loft-style houses. As is the popular village of Brockenhurst and its main-line railway station. City style and access, village life, miles of spectacular open country plus a 7-mile hop to the sea. In our view, these homes offer the best of several worlds.



WELCOME HOME

General

- Crittall-style aluminium glazing with full height feature window in living room
- Spacious vaulted kitchen and living room on first floor
- 2 Bedrooms, 2 Bathrooms and Study
- Underfloor heating on both ground and first floor, powered by air-source heat pump
- Allocated parking space with access to electric car charger
- Adjacent to Brockenhurst railway station

Connectivity & Electrical

- Ultrafast Full Fibre Broadband
- LED lighting throughout
- High & low-level TV points
- External lighting front and back

Kitchen & Living Room

- Kitchen designed and manufactured by Caro Design
- Appliances on display by AEG
- 20mm quartz worktops
- Induction hob with downdraught extractor (excluding Plot 5)
- Single oven with additional compact oven
- Integrated 70/30 fridge/freezer
- Integrated dishwasher
- High quality, light oak laminate flooring

Gardens

- Private outdoor space with patio and lawn
- Separate, communal bike storage

Family & En Suite Bathroom

- 2 bathrooms – one en suite
- Duravit wall-hung WC with matt black flush plate
- Brushed black fittings
- Illuminated mirrors with matt black frames
- Duravit single-drawer vanity unit

Bedrooms

- Fitted wardrobes by Hammonds to both bedrooms (excluding Plot 4)
- Textured loop-pile carpet

Building Warranty

- 10 year, insurance-backed building warranty provided by Q Assure Build Limited

WILDERNESS COAST VILLAGE AND CITY

ALL ROLLED INTO ONE

A National Park covering over 200 square miles of spectacular scenery, The New Forest is most famous for its wild ponies, which wander freely around the countryside and the villages. There are many ways to engage with this amazing natural environment: walking, cycling, riding, river swimming, kayaking. If water is your thing, go seven miles south to the many beaches and sailing hubs on New Forest's coastline - it stretches for 40 miles.

We think many would agree with us that this is one of Britain's most special places.

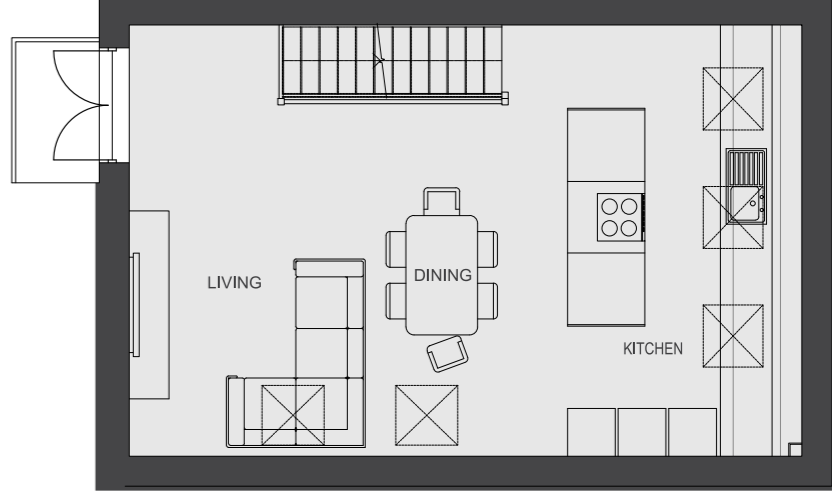
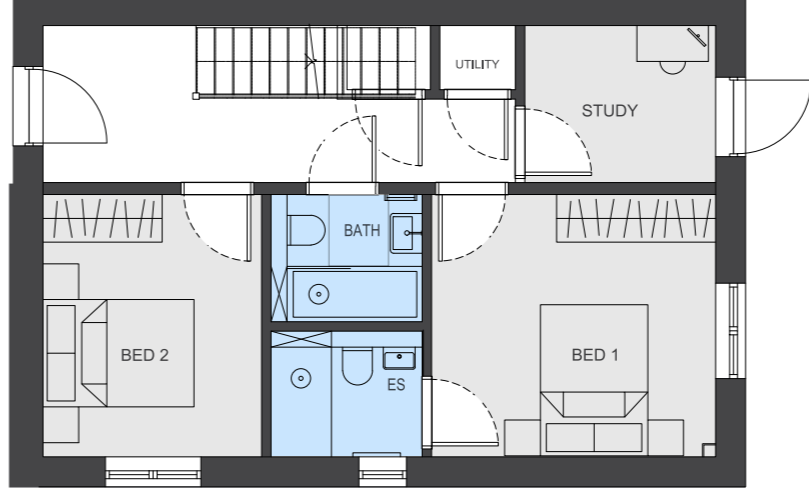
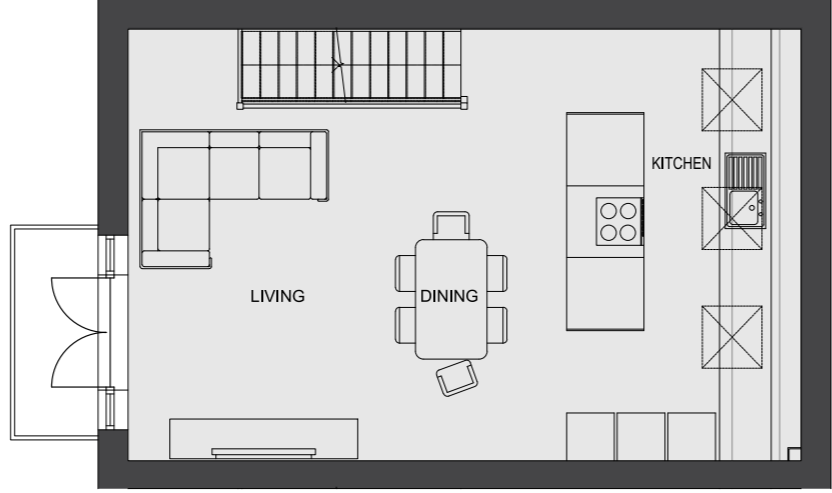
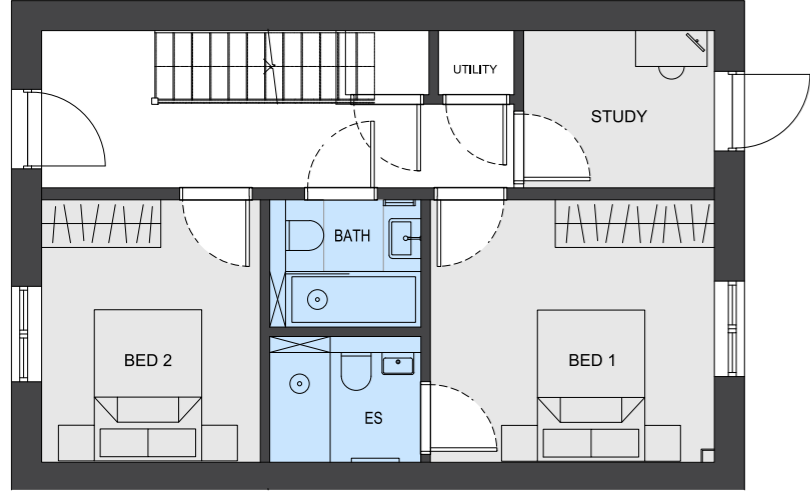


Photo credit (clockwise): www.girlahead.com, www.hammerson.com, www.visit-hampshire.co.uk, www.newforestcottages.co.uk.

Brockenhurst is a large village, often appearing in rankings of Britain's best places to live. It has two dozen cafés, restaurants and pubs in the village and the renowned hotels, Carey's Manor, The Pig, Balmer Lawn, Rhinefield and Limewood are very close. It's full of characterful, independent shops: a butcher, baker, greengrocer, ironmonger and more. Hartwood Lofts are close to the railway station, bringing cities within easy reach for work or fun. Southampton is a quarter of an hour away, Winchester just over half an hour and London, an hour and forty minutes.

SITE PLAN





FLOOR PLAN
PLOT 1,2,3 & 6

Ground Floor

- Principle Bedroom
3.30m X 3.57m
- En Suite Bathroom
1.59m X 1.90m
- Second Bedroom
3.30m X 2.75m
- Bathroom
1.60m X 1.90m
- Study
1.98m X 2.40m

First Floor

- Kitchen, Dining & Living Room
5.42m X 8.46m

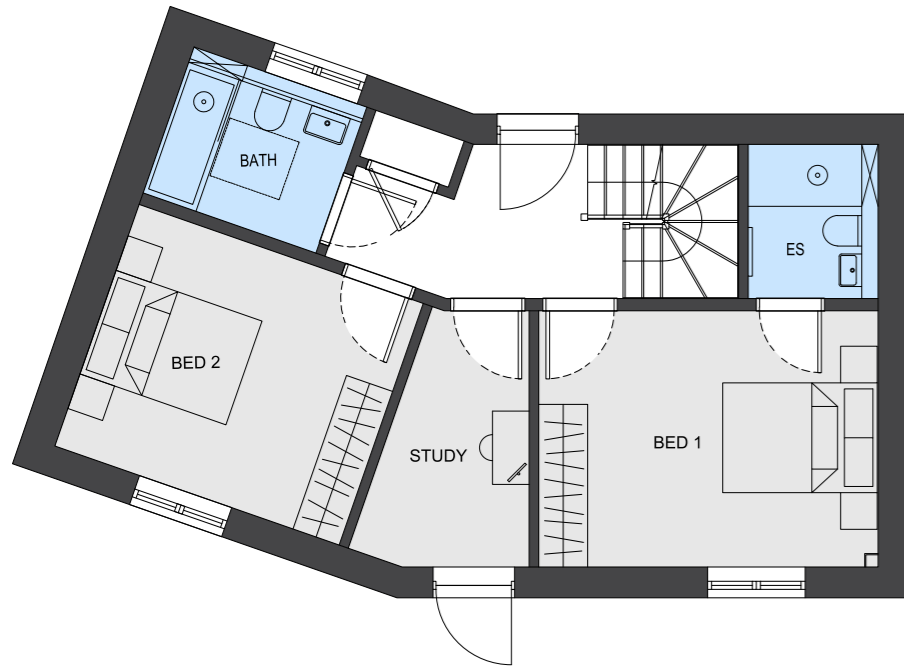
FLOOR PLAN
PLOT 4

Ground Floor

- Principle Bedroom
3.15m X 4.17m
- En Suite Bathroom
1.90m X 1.60m
- Second Bedroom
3.15m X 3.70m
- Bathroom
1.90m X 2.25m
- Study
3.20m X 2.09m

First Floor

- Kitchen, Dining & Living Room
5.42m X 8.46m

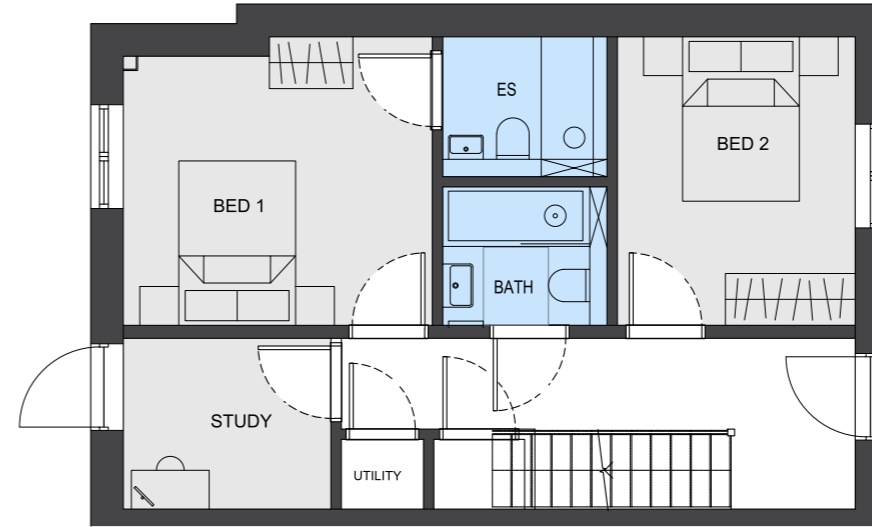
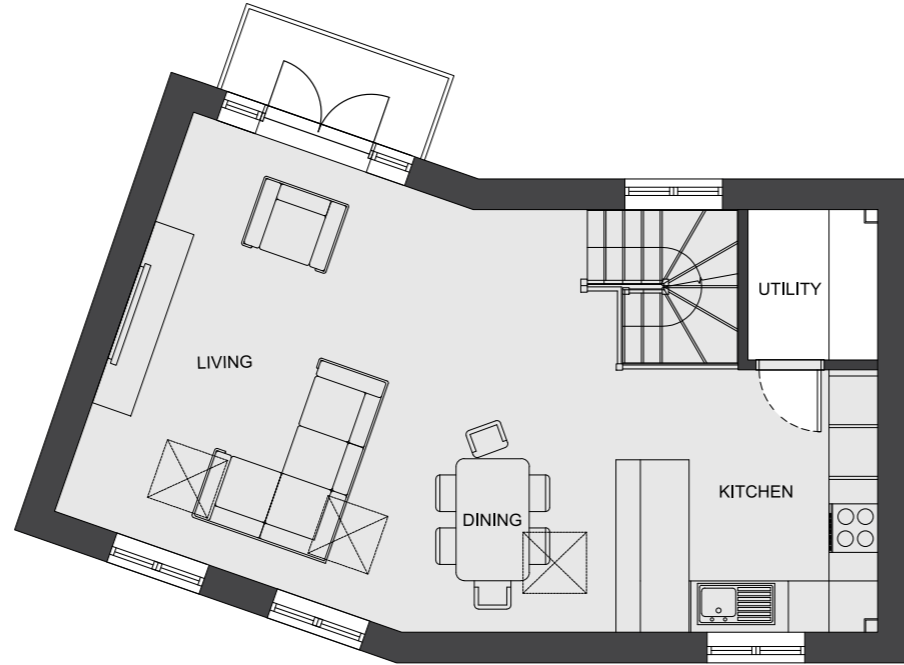


Ground Floor

- Principle Bedroom
3.15m X 4.17m
- En Suite Bathroom
1.90m X 1.60m
- Second Bedroom
3.15m X 3.70m
- Bathroom
1.90m X 2.25m
- Study
3.20m X 2.09m

First Floor

- Kitchen, Dining & Living Room
5.20 X 10.12m

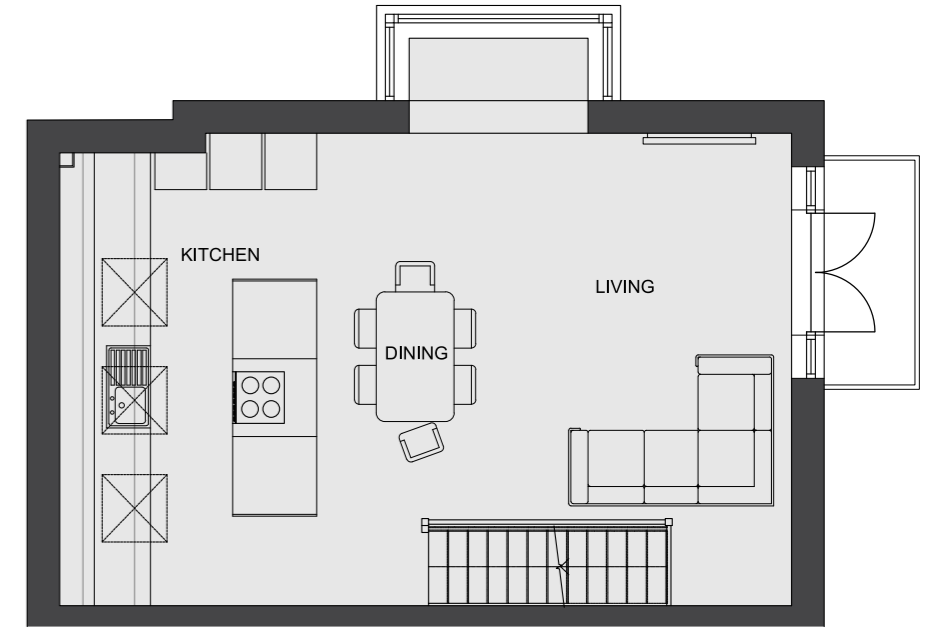


Ground Floor

- Principle Bedroom
3.33m X 3.57m
- En Suite Bathroom
1.62m X 1.90m
- Second Bedroom
3.40m X 2.75m
- Bathroom
1.60m X 1.90m
- Study
1.96m X 2.40m

First Floor

- Kitchen, Dining & Living Room
5.24m X 8.49m





WE HAVE A SIMPLE MISSION

TO BUILD HOMES WITH CHARACTER THAT WE WOULD WANT TO LIVE IN OURSELVES

BAYVIEW

Moving is a moment where you embrace your hopes and dreams for a new phase. We believe that people and their dreams matter. For us, what we do is always personal.

We build homes that we would like to live in ourselves... that we would sell to our friends and family. Funnily enough, we often do! We design thoughtfully, focusing on character and quality in the fundamentals and in the details.

When it comes to service, our ethos is the same - you'll always have one of us to talk to from your first view until you are settled in. It's that personal accountability that creates the trust in us. We have built our reputation as carefully as our properties, one brick at a time over three decades.

And, because we are local, you'll probably run into any one of us around town. See you in the pub, my friends!



Your Local Area

To the West & South:

- Lymington 5 miles
- Ringwood 10 miles
- Bournemouth 16 miles

To the East & North:

- Lyndhurst 4 miles
- Beaulieu 6 miles
- Southampton 12 miles

HARTWOOD LOFTS

BROCKENHURST

BAYVIEW

Welcome Home

01202 752 222

Bayview Developments, The Annexe, Canford Cliff House,
2 Meriden Close, Poole, Dorset, BH13 7JT

bayviewdevelopments.com



SPENCERS

NEW FOREST

01590 622 551

Spencers of The New Forest, 56 Brookley Road,
Brockenhurst, SO42 7RA

brockenhurst@spencersproperty.co.uk