

PAUL ALEXANDER  
MORTGAGE CONSULTANTS

For all insurance and mortgage needs,  
please call Paul Alexander Mortgage Consultants  
on 020 8997 3915

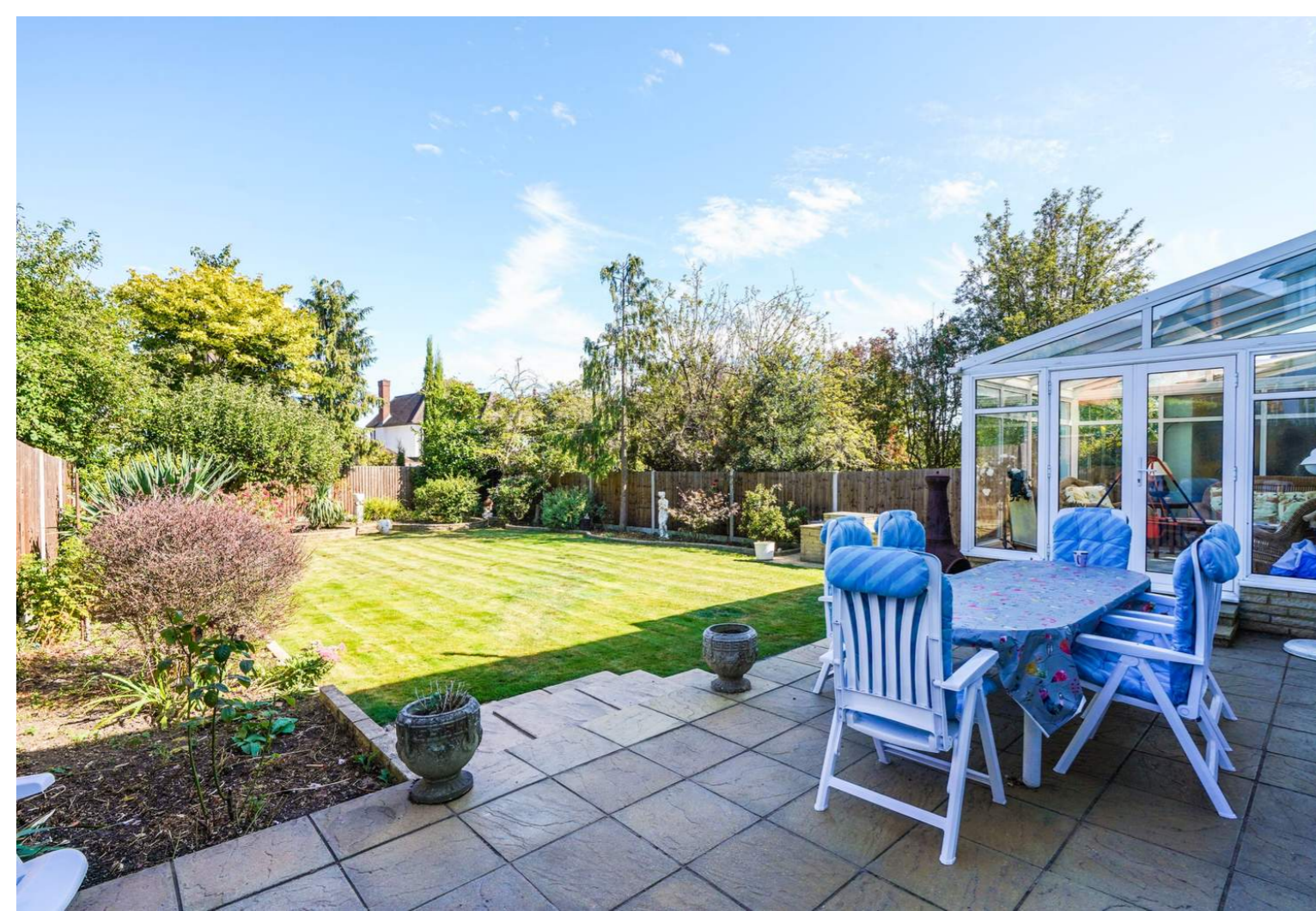
LONDON'S LOCAL AGENT  
enquiries@orchardsoflondon.com  
020 3962 6000 | orchardsoflondon.com  
Westworld West Gate London W5 1DT

## ASHBOURNE ROAD

pcm

- Four bedrooms
- Three reception rooms
- Two bathrooms and guest wc
- A conservatory
- An enormous private rear garden
- Garage and off street parking
- Excellent condition throughout
- Available mid July
- Furnished

LONDON'S LOCAL AGENT  
enquiries@orchardsoflondon.com  
020 3962 6000 | orchardsoflondon.com  
Westworld West Gate London W5 1DT

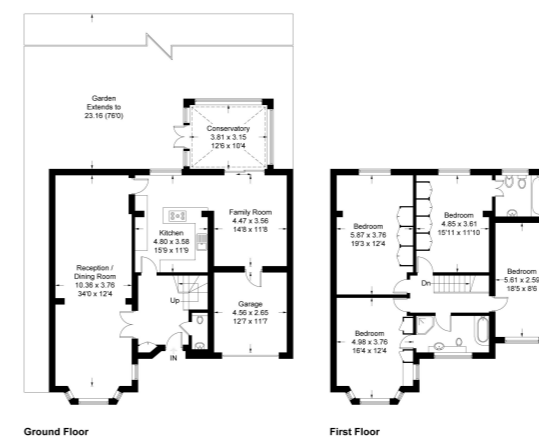


Orchards of London are proud to present to the market for let this superb four double bedroom detached house located in the ever popular Haymills area of Ealing. On the ground floor, the property comprises two spacious open plan reception rooms, a modern fitted kitchen with a breakfast area leading into a family room with doors directly out to the conservatory in the rear garden and a separate garage and downstairs guest cloakroom. On the first floor you can find four spacious double bedrooms, one with an en suite bathroom and a separate family bathroom. Ashbourne Road is situated moments from an excellent range of shops, bars and restaurants along Ealing Broadway. North Ealing

Underground Station (Piccadilly Line) is within easy reach, with motorists benefiting from easy access to the A406/A4

**Ashbourne Road, W5**

Approximate Gross Internal Area = 215.5 sq m / 2320 sq ft (Including Garage)



Energy Efficiency Rating		Current	Potential
Very energy efficient - lower running costs			
(92-100)	<b>A</b>		
(81-91)	<b>B</b>		
(69-80)	<b>C</b>		
(55-68)	<b>D</b>		
(39-54)	<b>E</b>		
(21-38)	<b>F</b>		
(1-20)	<b>G</b>		
Not energy efficient - higher running costs			
England, Scotland & Wales		63	74

Measured in accordance with RICS Code of Measuring Practice. To be used for identification and guidance purposes only. Whilst every care is taken in the preparation of this plan, please check all dimensions, shapes and compass bearings before making any decisions reliant upon them. www.london8.com © 2019 hmk@london8.com