





- Lounge
- Kitchen Diner
- Sunroom
- Two Bedrooms
- Bathroom
- uPVC Double Glazing
- Gas Central Heating
- Gardens

**Description**

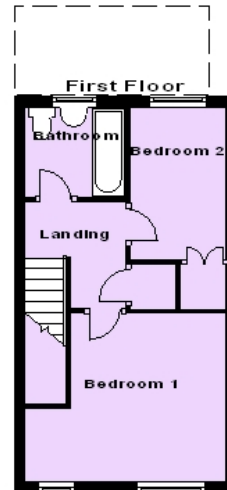
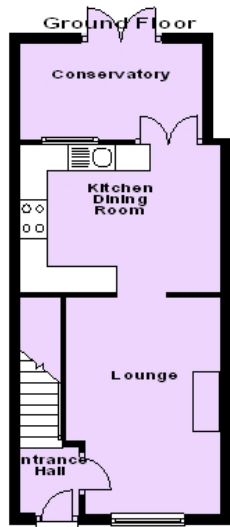
A two bedroom end mews style property occupying a sought after position in the popular residential location of Rudheath. In brief the accommodation comprises- Lounge, kitchen diner, sun room. To the first floor there are two bedrooms and a bathroom. There are gardens to both the front and rear. Benefitting from uPVC double glazing throughout and gas central heating this would be an ideal purchase for first time buyers or the buy to let investor. Viewing is highly recommended. Immediately available, restrictions apply.



**Location**  
**Tenure**

**EPC Rating: D**





Williams Estates is the trading name of Williams Estates (Ltd). Registered address 33, The Green, Hartford, Northwich, Cheshire, CW8 1QA.

Reg number 07682683. Director Andrew P Williams



These particulars, whilst believed to be accurate are set out as a general outline only for guidance and do not constitute any part of an offer or contract. Intending purchasers should not rely on them as statements of representation of fact, but must satisfy themselves by inspection or otherwise as to their accuracy. All measurements quoted are approximate. We are unable to confirm the working order of any fixtures and fittings including appliances that are included in these particulars. No person in this firm's employment has the authority to make or give any representation or warranty in respect of the property.