



Orchard Way, Harwell, Didcot, Oxfordshire OX11 0LH
Oxfordshire, £190,000

Waymark

Orchard Way, Didcot OX11 0LH

Oxfordshire

Freehold

Description

This one bedroom semi-detached bungalow is ideal for first time buyers or those looking for single level living. The internal accommodation comprises of: entrance hall, bathroom, kitchen, lounge/dining room and one double bedroom benefitting from fitted wardrobes. Externally, the property occupies a generous corner plot mainly laid to lawn with a patio and gravelled seating area with gated access to the side bordered by various bushes, trees and shrubs.

Please note there is a restrictive covenant for the first 5 years of ownership with this property.

The property is connected to mains services including mains gas, water and electricity.

Location

Situated within the thriving and picturesque village of Harwell. The village boasts a butchers, newsagents, hair salon and a pub as well as a Primary School just a stones throw away. Further amenities and schools can be found in the neighbouring town of Didcot (2 miles) and the nearby market town of Wantage (6 miles).

There are excellent road links provided by the A34/M4/M40, and direct mainline rail links into London Paddington from Didcot Parkway.

Viewing Information

By appointment only please.

Local Authority

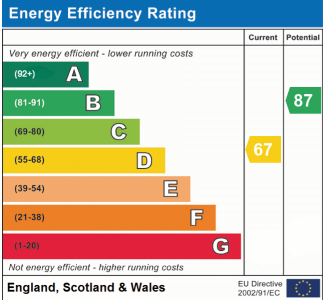
South Oxfordshire

Tax Band: C



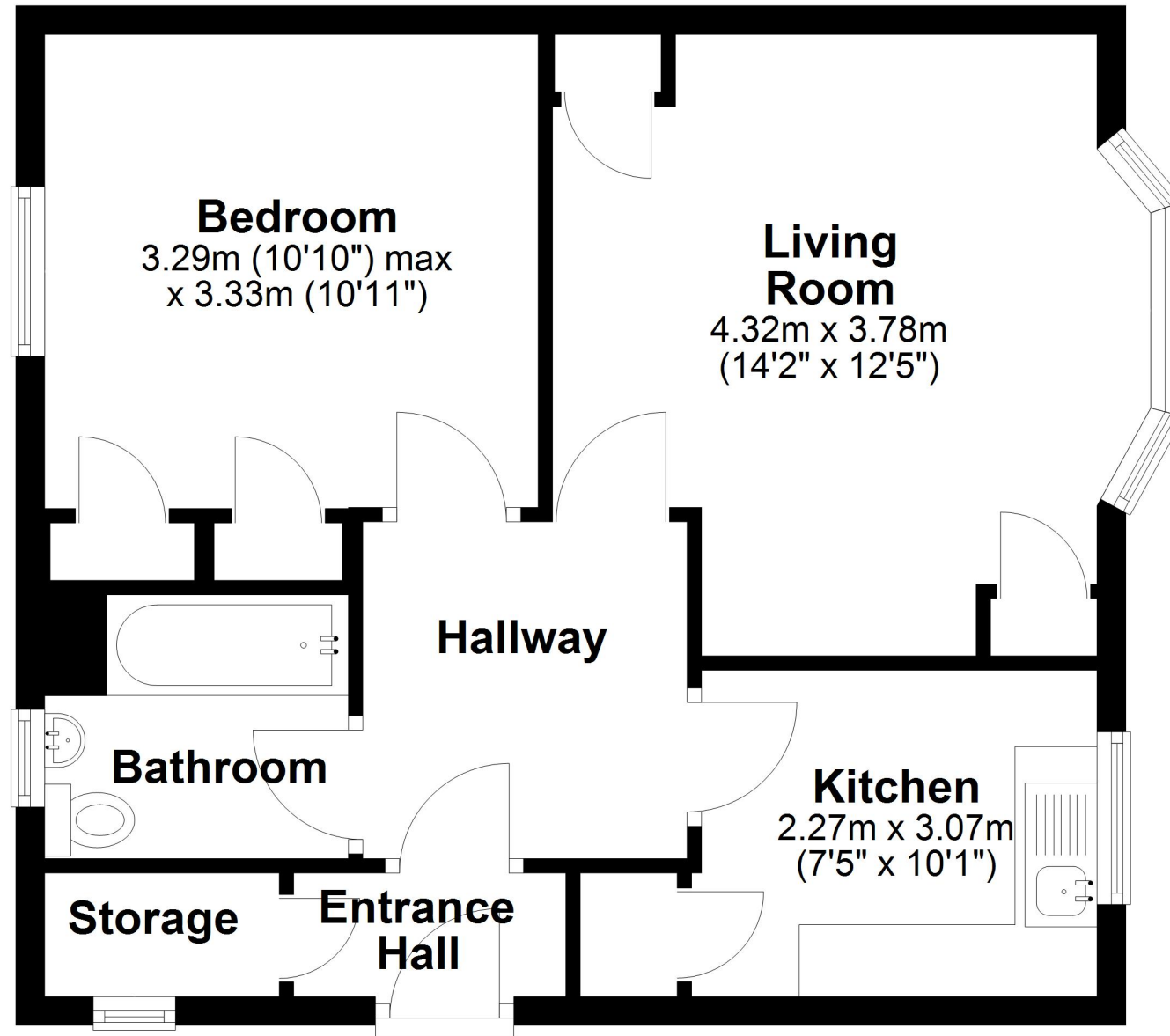
Waymark
Wantage Office

T: 01235 645645
E: wantage@waymarkproperty.co.uk



Ground Floor

Approx. 49.3 sq. metres (531.0 sq. feet)



Total area: approx. 49.3 sq. metres (531.0 sq. feet)

Important Notice: These Particulars have been prepared for prospective purchasers for guidance only. They do not form part of an offer or contract. Whilst some descriptions are obviously subjective and information is given in good faith, they should not be relied upon as statements or representative of fact.

