

6 Pine Court,

Frome, BA11 2UJ

COOPER
AND
TANNER



£275,000 Freehold

3 1 1 EPC C

Description

6 Pine Court is a modern and naturally light three-bedroom house positioned within a sought-after part of Frome. The house enjoys attractive landscaped gardens and allocated parking.

To the front of the property is an area laid to slate chippings with a path adjacent which leads to the front door. The front door opens into an entrance hall with a storage cupboard and access to the first floor and into the open planned living area. The sitting room is to the front of this light and airy open planned and dual aspect space, whilst the kitchen and dining area is to the rear, with direct access into the gardens. The kitchen includes a range of wall and base units, a fitted oven and gas hob and space for white goods.

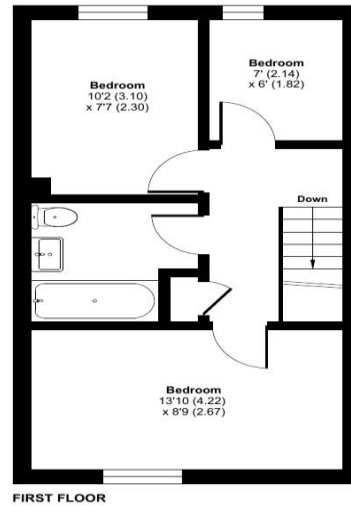
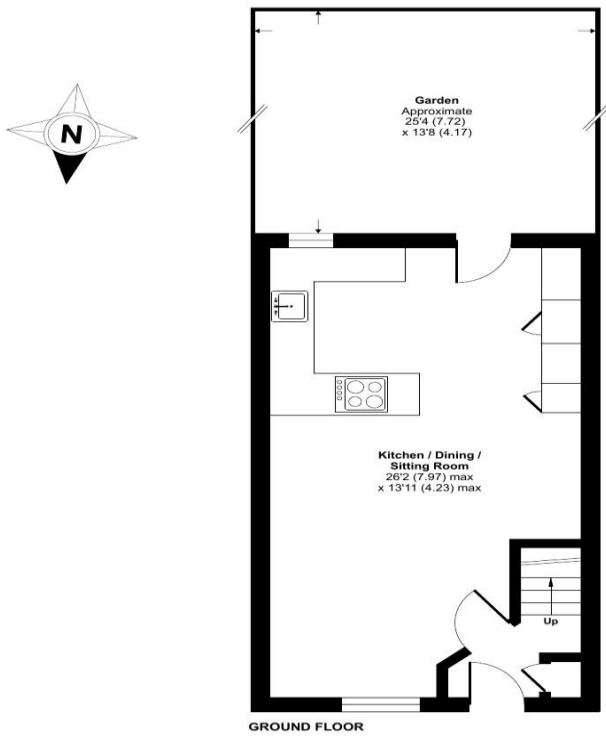
On the first floor there are two double bedrooms, one single bedroom and the family bathroom.

The back garden is full enclosed and has been laid with a beautiful stone patio, an excellent place to entertain and low maintenance. There is the additional benefit of allocated parking.

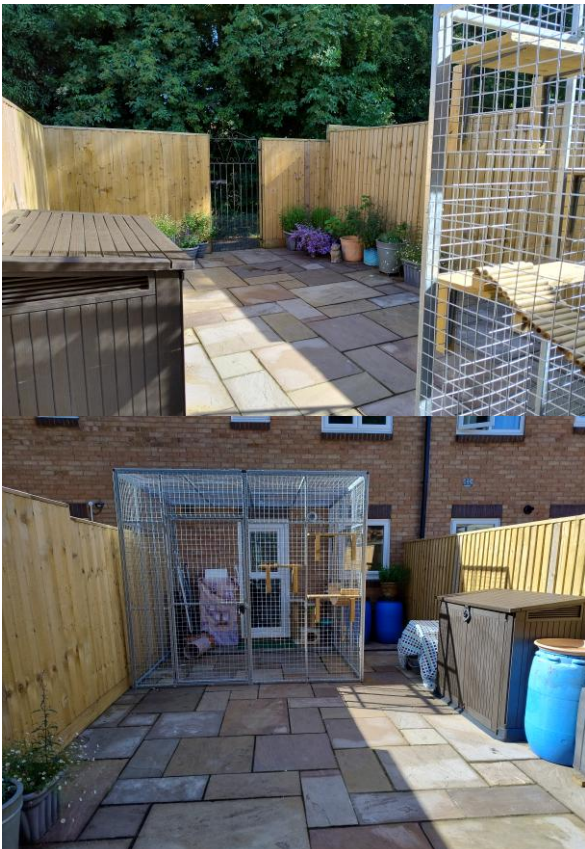
Pine Court, Frome, BA11

Approximate Area = 726 sq ft / 67.4 sq m

For identification only - Not to scale



Floor plan produced in accordance with RICS Property Measurement 2nd Edition, incorporating International Property Measurement Standards (IPMS2 Residential). © nichecom 2025. Produced for Cooper and Tanner. REF: 1316933



Features

- Open plan kitchen/dining/sitting room
- Three bedrooms
- Landscaped Garden
- Allocated parking
- Mains electricity, water & drainage connected
- Gas central heating

Agents note

Please be advised that the enclosure in the rear garden will not be included in the sale.

Local Information

- Council Tax Band B
- Tenure Freehold
- EPC Rating C

FROME OFFICE

Telephone 01373 455060

6 The Bridge, Frome, Somerset, BA11 1AR

frome@cooperandtanner.co.uk

**COOPER
AND
TANNER**

Important Notice: These particulars are set out as a general outline only for the guidance of intended purchasers and do not constitute, nor constitute part of, an offer or contract. All descriptions, dimensions, reference to condition and necessary permissions for use and occupation, warranties and other details are given without responsibility and any intending purchasers should not rely on them as statements or representations of fact but must satisfy themselves by inspection or otherwise as to the correctness of each of them.

