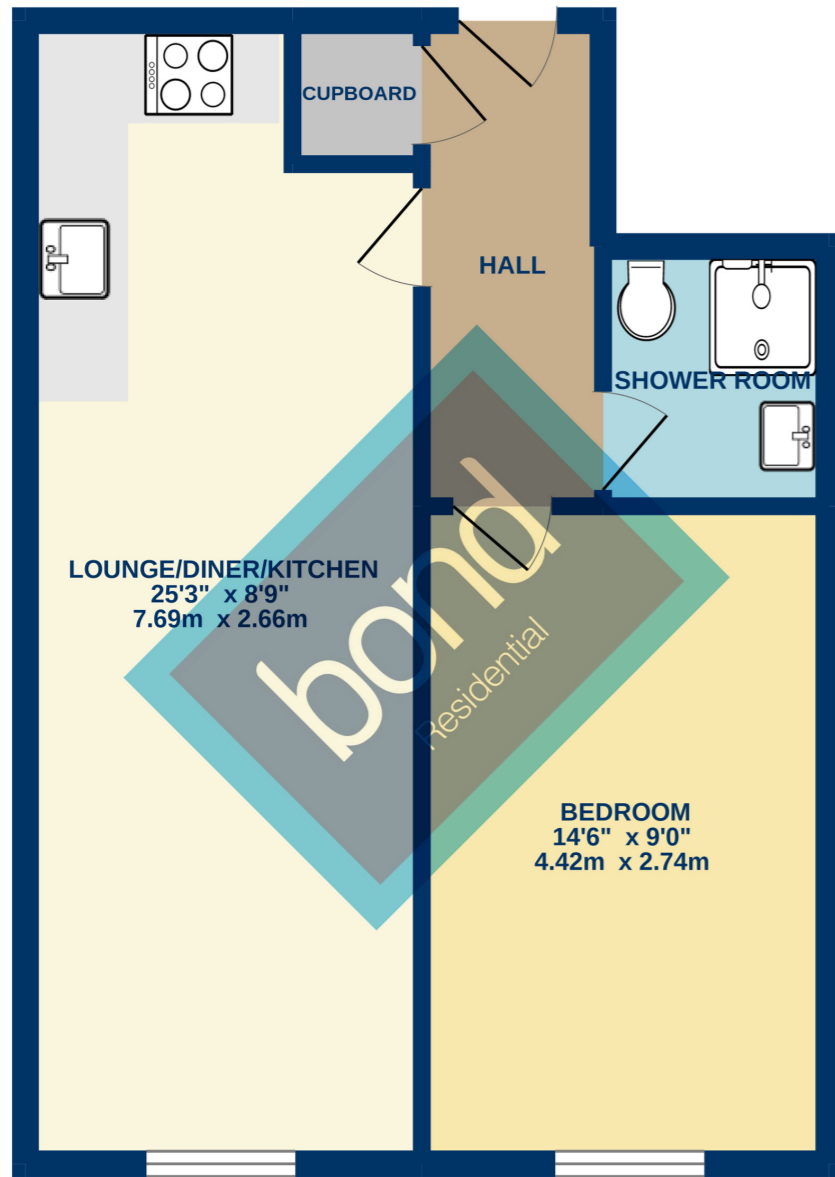


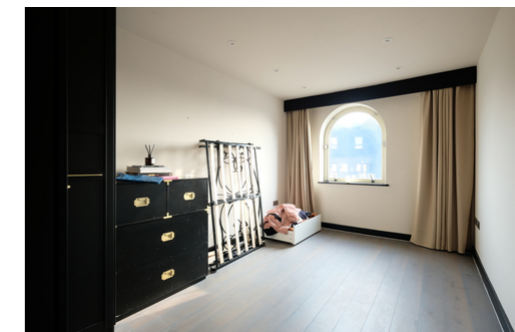
GROUND FLOOR



FLOORPLAN



Hodgson House, 50 Rainsford Road, Chelmsford, CM1 2XB



Whilst every attempt has been made to ensure the accuracy of the floorplan contained here, measurements of doors, windows, rooms and any other items are approximate and no responsibility is taken for any error, omission or mis-statement. This plan is for illustrative purposes only and should be used as such by any prospective purchaser. The services, systems and appliances shown have not been tested and no guarantee as to their operability or efficiency can be given.
Made with Metropix ©2022



01245 500599
www.bondresidential.co.uk
43 New London Road, Chelmsford, CM2 0ND



Energy Efficiency Rating D



£1,000 Per Month

Consumer Protection from Unfair Trading Regulations 2008 and the Business Protection from Misleading Marketing Regulations 2008.
Bond Residential have made every effort to ensure that consumers and/or businesses are treated fairly and provided with accurate material information as required by law. We have not tested any apparatus, equipment, fixture, fitting or any services and as such are unable to verify they are in working order, fit for their purpose, or within the ownership of the seller or landlord. Neither have we been able to check the legal documentation to verify the legal status of the property. We therefore advise potential buyers or tenants to verify these matters with their own solicitors or other advisers.

Flat 18 Hodgson House, 50 Rainsford Road, Chelmsford, Essex,
CM1 2YR



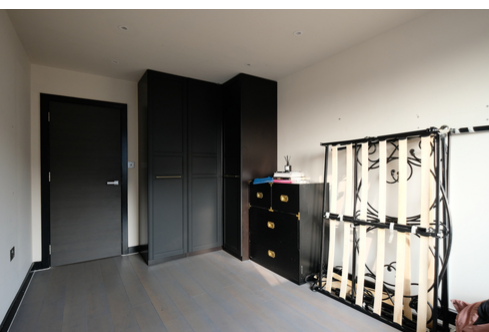
Introducing this one bedroom first floor apartment which is available for immediate occupation on a long term basis.

The apartment features an open plan lounge, kitchen/diner, and the kitchen comes complete with fitted upper and lower level units, fridge with freezer compartment, washing machine and electric oven and hob. One double bedroom with built in wardrobe and a separate shower room. Underfloor heating throughout and a modern neutral theme.

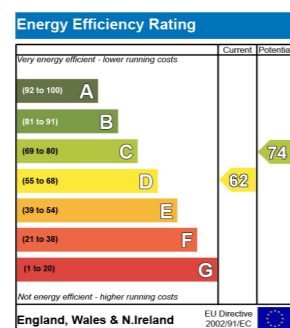
Allocated parking space plus visitors parking, behind secure gates. Short walking distance to mainline station and Chelmsford City Centre. The property is provided unfurnished.

Call us today to register and arrange a viewing.

£1,000



- Available now on a long term basis
- Unfurnished
- Underfloor Heating Throughout House & Outbuilding
- Allocated & visitors parking
- Kitchen Appliances Included
- Short walking distance to mainline station & City Centre



01245 500599
www.bondresidential.co.uk
 f/bondresidential @bondresidential