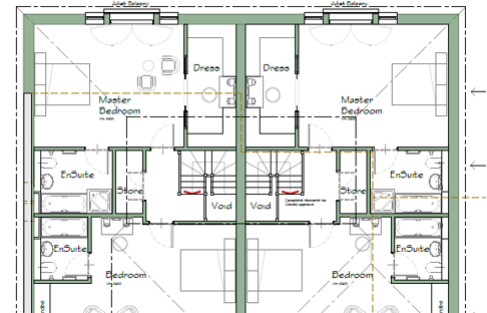


EVERETT HOMES

Sales | Lettings | Land



18 Seaward Avenue, Bournemouth, Dorset, BH6 3SH

£975,000 Freehold

- Planning Approval For Two Semi-Detached Houses
- Moments From Southbourne Grove
- Offered With No Forward Chain
- Fantastic Opportunity
- Offers Considered
- Currently Arranged As A Six Bedroom Detached House
- Moments From The Cliff Top & Fishermans Walk
- Planning Application Number P/25/00836/FUL
- Can We Purchased As A Stand Alone Property To Refurbish

26, Poole Hill, Bournemouth, BH2 5PS

01202143611

www.everetthomes.co.uk

18 Seaward Avenue, Bournemouth, Dorset, BH6 3SH

£975,000 Freehold

PLANNING PERMISSION GRANTED FOR TWO SEMI-DETACHED HOUSES WITH GARDENS AND PARKING. Situated in this prime location a moments walk to the cliff top, Fishermans Walk and Southbourne Grove, fantastic opportunity. Currently arranged as a six bedroom detached house.

PLEASE NOTE: The measurements that have been quoted are approximate and strictly for guidance only. All fittings, fixtures, services and appliances have not been tested and no guarantee can be given that they are in working order. The particulars are believed to be correct but their accuracy is not guaranteed and they do not constitute an offer or form part of a contract. The images displayed are for information purposes only and it cannot be inferred that any item shown will be included in the property.

