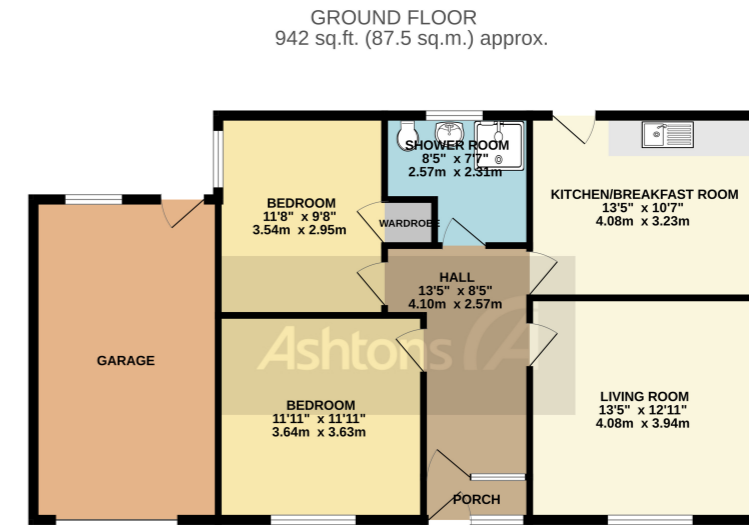


# Elmwood Avenue, Ashton-in-Makerfield, £280,000

Offers in Region of



TOTAL FLOOR AREA: 942 sq.ft. (87.5 sq.m.) approx.  
While every effort has been made to ensure the accuracy of the floorplan contained herein, measurements of floors, windows, doors and any other items are approximate and no responsibility is taken for any error, omission or mis-statement. This plan is for illustrative purposes only and should be used as such by any prospective purchaser. The services, systems and appliances shown have not been tested and no guarantee as to their operation or efficiency can be given.  
Made with Metropix CS202

\*No Chain\* Situated on the highly sought after 'Oakwood Avenue'. A quiet residential development off Liverpool Road, Ashton-in-Makerfield this detached true bungalow is offered for sale with no upward chain. Situated on a generous corner plot boasting well maintained mature gardens to the front, side and rear and an attached garage.

See more of this house at [ashtons.net](http://ashtons.net)

 x 2     x 1

