



Day & Co
ESTATE AGENTS

28 Cavendish Street
Keighley
BD21 3RG



13 Exley Head View, Keighley,
West Yorkshire, BD22 6RD

£119,995

T: 01535 664609

W: www.dayandcoestateagents.co.uk

E: keighley@dayandcoestateagents.co.uk

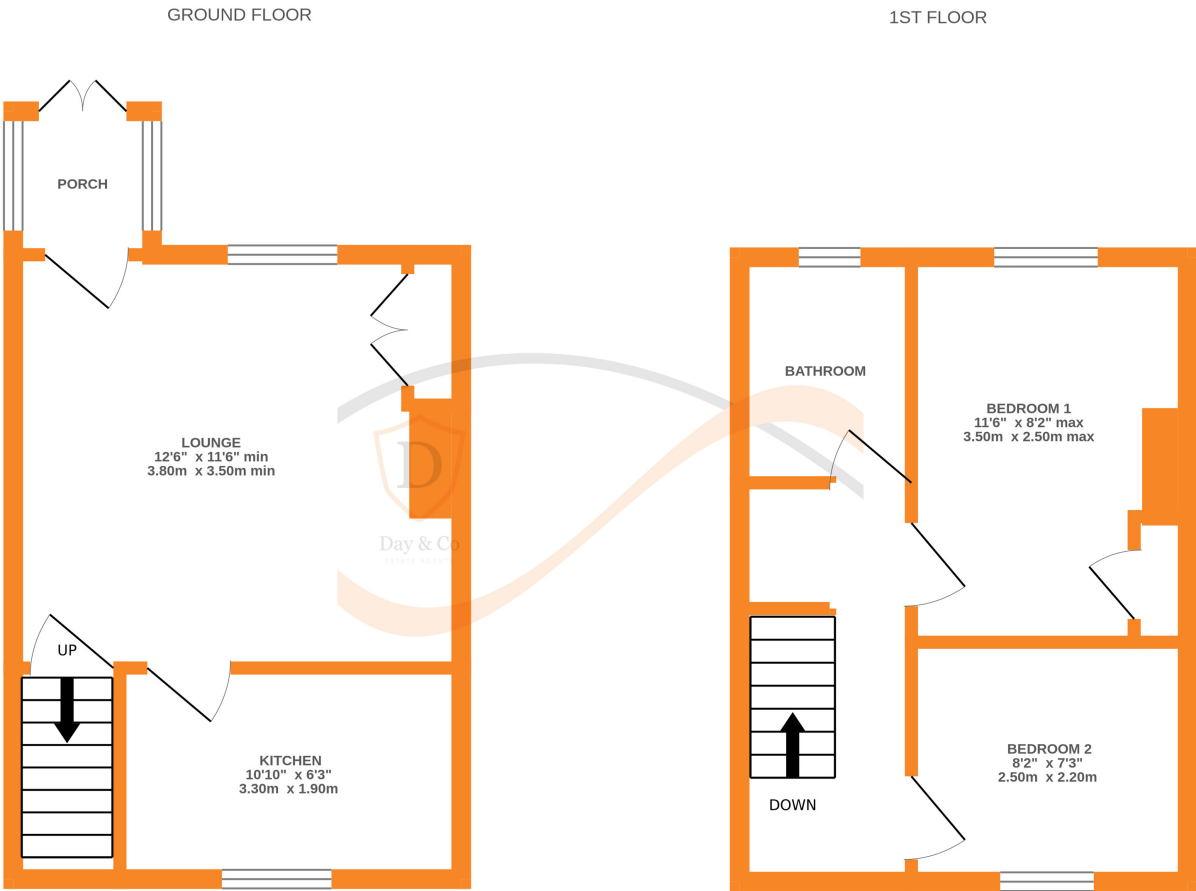
- THROUGH BY LIGHT TERRACE
 - WOOD BURNING STOVE
 - ENJOYS DISTANT VIEWS
- TWO BEDROOMS
 - ELEVATED POSITION
 - EPC RATING D

SUMMARY

** DELIGHTFUL STONE THROUGH BY LIGHT TERRACE HOUSE, ELEVATED POSITION ENJOYING DISTANT VIEWS, TWO BEDROOMS, WOOD BURNING STOVE, FRONT GARDEN, EPC RATING D **

FULL DESCRIPTION

Offered for sale is this delightful, two bedroom terrace house (Through By Light) situated in an elevated position off Braithwaite Edge Road. This property has accommodation briefly comprising of an Entrance Porch, Lounge with wood burning stove, Kitchen with a range of units, worktops, sink, window to the rear. First Floor - Landing with storage cupboard area, Two Bedrooms and a Bathroom which comprises of a bath with shower over, w.c., wash hand basin, window to the front. Gas Central Heating & Double Glazing. Outside - Garden area to the front. EPC Rating D.



Whilst every attempt has been made to ensure the accuracy of the floorplan contained here, measurements of doors, windows, rooms and any other items are approximate and no responsibility is taken for any error, omission or mis-statement. This plan is for illustrative purposes only and should be used as such by any prospective purchaser. The services, systems and appliances shown have not been tested and no guarantee as to their operability or efficiency can be given.
Made with Metropix ©2024