



Balmoral Court, Springfield Road, Chelmsford, Essex, CM2 6JQ

 1  2  1

£150,000 Leasehold

Bond Residential are delighted to offer for sale this two-bedroom ground floor apartment with no onward chain. The property comprises an entrance hall with a built-in storage cupboard, bathroom, two bedrooms, lounge/diner, and fitted kitchen. Additionally, this ground floor apartment offers direct access to the communal gardens via patio doors off the lounge.

Facilities within the complex include a lounge for the use of residents, a laundry room, and guest suites available for friends and relatives' overnight stays. Each flat has its own emergency audio system with direct contact to the House Manager. A security entry system enables residents to identify visitors before allowing them to enter. Each apartment has electric heating and double-glazed windows.

LOCATION:

Balmoral Court was built in 1987 and is located in the city centre of Chelmsford, which conveniently offers walking distance to the high street and shopping centres.

Chelmsford city centre offers a selection of bars and a wide variety of places to eat, from independent family restaurants to well-known chain restaurants serving cuisines from around the world. Chelmsford features a comprehensive range of shopping facilities with its pedestrianised High Street, two shopping precincts, and the hugely popular Bond Street with the John Lewis store. Chelmsford is extremely popular with leisure enthusiasts, boasting a selection of sports clubs at the local Chelmer Park, various gyms including the newly refurbished Riverside Ice & Leisure, and the nearby Oaklands Park and Central Park provide pleasant open spaces. Chelmsford's mainline station provides a direct service to London Liverpool Street with a journey time as fast as 37 minutes. The property is also conveniently located with easy access to the A12 and A414, which provide access to the M25 and M11.

TENURE: Leasehold **SERVICE CHARGE:** £4273 annually **LEASE LENGTH:** 99 Years from 24th June 1986 **COUNCIL TAX BAND:** B **EPC RATING:** C

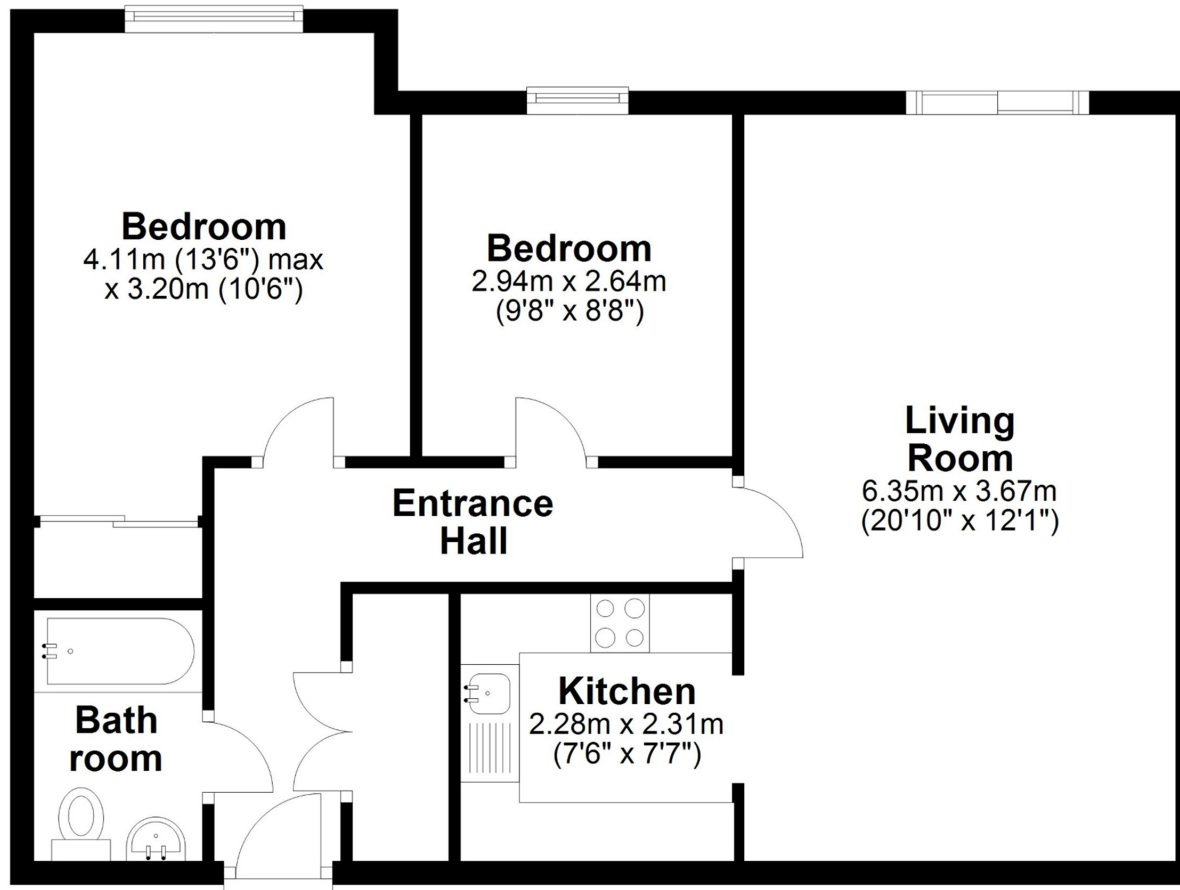
- Retirement Apartment
- Ground floor apartment
- Lounge/Diner
- Two Bedrooms

- Residents Communal Garden
- Modern Fitted Kitchen with built in oven & hob
- No Onward Chain
- Fitted Wardrobes to bedroom one





Ground Floor



APPROX INTERNAL FLOOR AREA
64 SQ M (690 SQ FT)
This floorplan is for illustrative
purposes only and is **NOT TO SCALE**
All measurements are approximate
NOT to be used for valuation purposes
Copyright Bond Residential 2023

78, New London Road,
Chelmsford, Essex, CM2 0PD
Telephone: 01245 500599
Website: www.bondresidential.co.uk

Consumer Protection from Unfair Trading Regulations 2008 and the Business Protection from Misleading Marketing Regulations 2008. Bond Residential have made every effort to ensure that consumers and/or businesses are treated fairly and provided with accurate material information as required by law. We have not tested any apparatus, equipment, fixture, fitting or any services and as such are unable to verify they are in working order, fit for their purpose, or within the ownership of the seller or landlord. Neither have we been able to check the legal documentation to verify the legal status of the property. We therefore advise potential buyers or tenants to verify these matters with their own solicitors or other advisers.

