



## 22 Holly Close, Crownhill, Milton Keynes, Buckinghamshire, MK8 0DP

**£22,500**

- 10% SHARED OWNERSHIP
- Cash Buyers Only
- One bedroom bungalow
- Low maintenance rear garden
- Allocate parking
- Within a desirable location
- £30,000 premium
- £233.63 Monthly rent £9.97 monthly service charge
- EPC Rating







**\*\*Block Viewing for Wednesday the 8th of June please call for your slot\*\***

**CASH BUYERS ONLY**

£30,000 premium

This is an Ex Milton Keynes Borough Council Lease now with Guinness housing association.

Rent monthly is £233.63

Service charge monthly is £9.97

90 Years Left On Lease

This is a wonderful one bedroom bungalow located in the highly desirable location of Two Mile Ash. The accommodation comprises an entrance hall, lounge/diner, kitchen, large bedroom and family bathroom. Outside there is a private rear garden and allocated parking. Please call the elevation team today to arrange your viewing.

## Kitchen

2.31m x 3.71m (7' 7" x 12' 2")

## Lounge

4.83m x 3.06m (15' 10" x 10' 0")

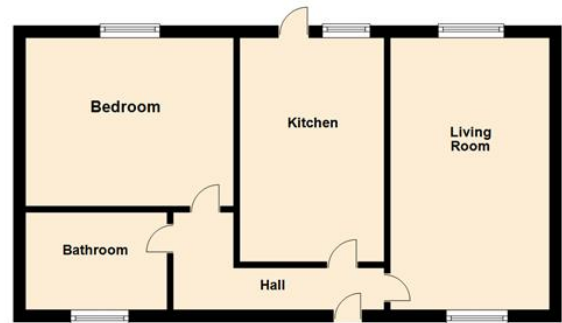
## Bedroom

3.10m x 2.83m (10' 2" x 9' 3")

## Disclaimer

Whilst we have endeavoured to prepare our sales particulars accurately none of the services, appliances or equipment have been tested. A buyer should satisfy themselves on such matters prior to purchase. Any measurements or distances mentioned in these particulars are for guide reference only. If such particulars are fundamental to a purchase, buyers should rely on their own enquiries. All enquiries should be directed to Elevation Estate Agents in the first instance.

**Ground Floor**



Floor plans are for layout purposes only. Measurements are approximate and subject to inaccuracies  
Plan produced using PlanUp.