

£587,500
Freehold



THOMAS CONNOLLY
ESTATE AGENTS | LETTING AGENTS | NEW HOMES | PROPERTY MANAGEMENT



Summary of Property

- Part Exchange Options are available on this plot (subject to terms and conditions)
- Move in by Christmas 2024
- Incentives available (subject to availability)
- Canal side Living
- 4 Bedrooms
- Brand New Family Home
- Stunning Location
- Granite Worksurfaces

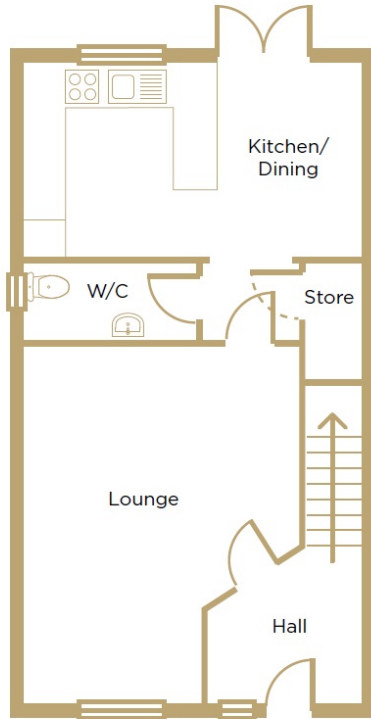
Room Descriptions



3 BEDROOMS

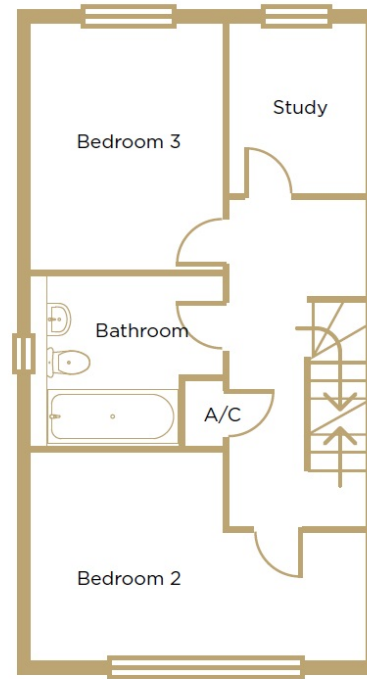
PLOTS 5 6 7

Approximate area: 1342 sq ft



Ground Floor

Room	Measurement (sq.ft)	Measurement (sq.m)
Lounge	17'6 x 9'9	5.33 x 2.98m
Kitchen/Dining	16'9 x 9'5	5.11 x 2.87m
W/C	8'0 x 3'8	2.43 x 1.13m



First Floor

Room	Measurement (sq.ft)	Measurement (sq.m)
Bedroom 2	16'9 x 10'3	5.11 x 3.13m
Bedroom 3	12'4 x 9'5	3.75 x 2.87m
Study	8'9 x 7'11	2.67 x 2.16m
Bathroom	8'2 x 7'5	2.48 x 2.25m



Second Floor

Room	Measurement (sq.ft)	Measurement (sq.m)
Bedroom 1	13'5 x 10'2	4.09 x 3.09m
Dressing Room	10'1 x 5'10	3.08 x 1.79m
En-Suite	10'1 x 8'1	3.08m x 2.47m

Plot 5 plan shown as reference. Plot 6 is a mirror of this plot, some slight differences may occur