



Tel: 01242 676767

www.cotswoldestateagents.co.uk

41a Church Road, Bishops Cleeve, Cheltenham, GL52 8LP

10, West Way
Bishops Cleeve GL52 8SG

£229,950

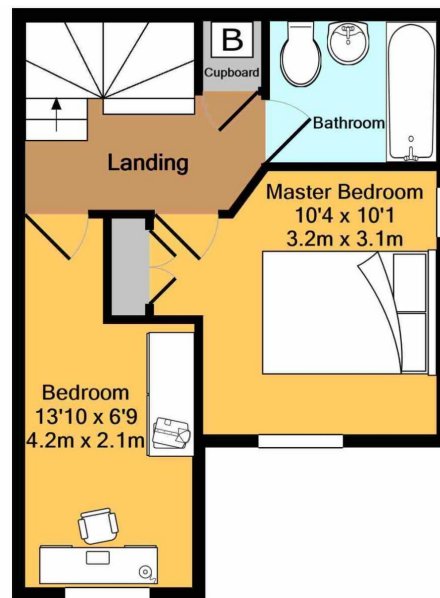
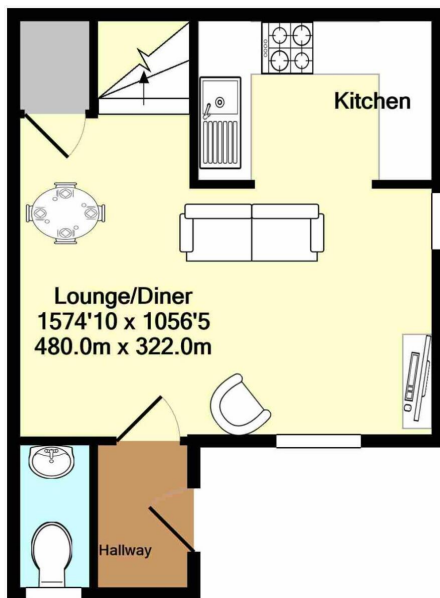


FOR SALE

Set in a highly desirable area within a small cul-de-sac is this superb two bedroom stone built house. The spacious well planned living accommodation features, entrance hall, cloakroom, generous lounge/diner and modern fitted kitchen with built-in and integrated appliances. On the first floor there are two good size bedrooms and a modern bathroom suite. The property further benefits from wooden style floor coverings a good standard of decoration, off road parking and is convenient to the village centre with its wide range of shopping facilities and amenities. * PROMPT VIEWING RECOMMENDED *







Ground floor
Approx. Floor
Area 291 Sq.Ft.
(27.0 Sq.M.)

1st floor
Approx. Floor
Area 291 Sq.Ft.
(27.0 Sq.M.)

Total Approx. Floor Area 581 Sq.Ft. (54.0 Sq.M.)

Whilst every attempt has been made to ensure the accuracy of the floor plan contained here, measurements of doors, windows, rooms and any other items are approximate and no responsibility is taken for any error, omission, or mis-statement. This plan is for illustrative purposes only and should be used as such by any prospective purchaser. The services, systems and appliances shown have not been tested and no guarantee as to their operability or efficiency can be given

Made with Metropix ©2021

