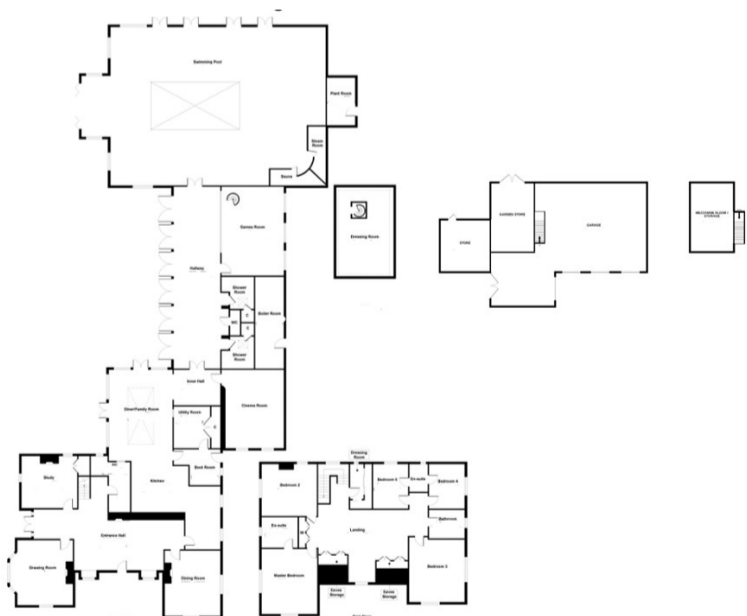




Tudor Lodge, Holbeach PE12 8QD

£1,600,000



An imposing Manor House which retains style, grace and a raft of period features. With its generous proportions, numerous grand reception rooms and extensive leisure facilities including large indoor swimming pool, tennis court with pavilion, professional style cinema and self-contained bar / games room, Tudor Lodge is reminiscent of the kind of luxury property many enjoy for a spa break getaway.

This impressive family home set in substantial, mature grounds of approximately 3 acres occupies a beautiful setting at the head of long driveway, with a wide turning circle to its front and generous parking. To the right hand side of the main house and in-keeping is a quadruple garage block with additional storage and two self-contained one bedroom annexes each with its own kitchen, lounge and bathroom.

From the moment you step inside there is a feeling of quality in the fixtures & fittings and the essence of craftsmanship from the beautifully thought-out bespoke designed Kitchen to the stunning Glass & Oak styled Family Room, providing an overall feeling of upmarket comfort and lifestyle.

Five Double Bedrooms, en-suite, Jack & Jill Shower Room and Family Bathroom complete this intriguing property which can be both cosy while being of generous size and also a great space for entertaining and socialising, inside and out.