

## 17 Bessemer Place, North Greenwich, London, SE10 0GP

£1,975 PCM

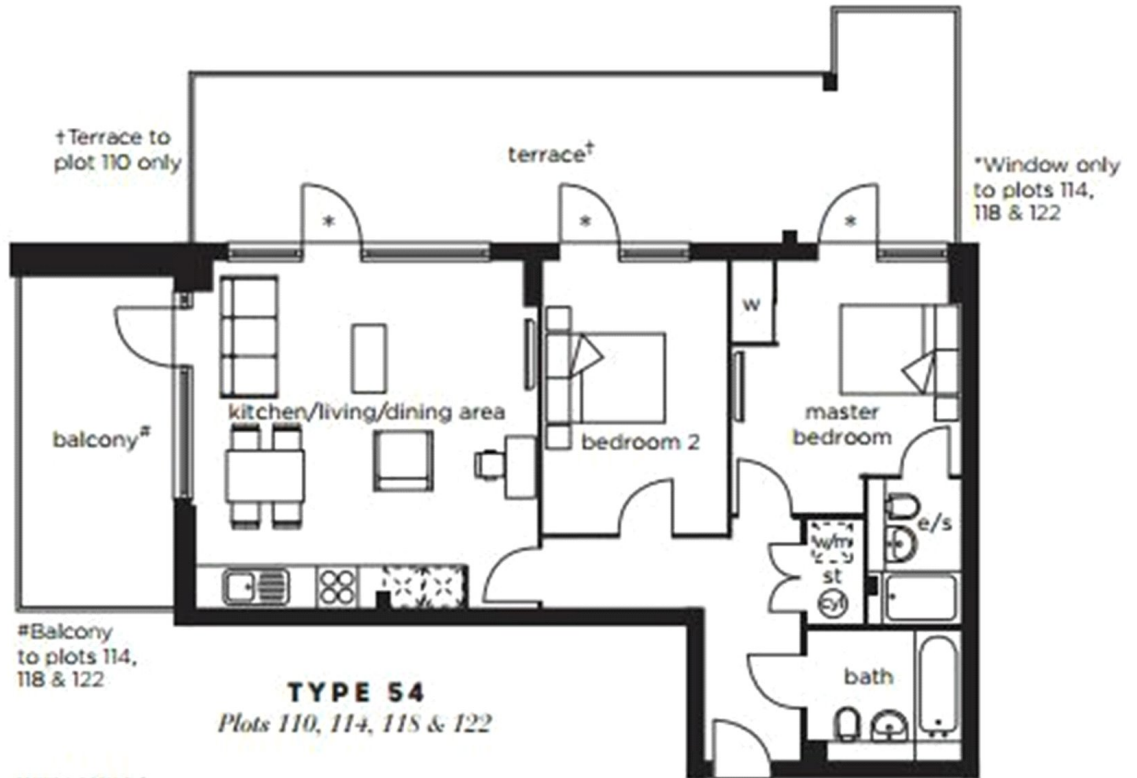
\*Pay less upfront with a Zero Deposit Guarantee\* and \*ZERO AGENCY FEES\* Located on the 12th floor of a new luxury riverside development boasting imposing views towards Canary Wharf, River Thames and the London city skyline, this contemporary two bedroom unfurnished apartment is situated minutes from the bar, restaurants and world class entertainment of the O2 Arena. Further benefits from concierge services, residents gymnasium and allocated parking. This property is available from the 17th August 2019.

Viewing by appointment with 1st avenue.

**Call: 020 8293 8600**

1st avenue, 128 Metcalfe Court, West Parkside, London SE10 0EL  
email: [info@1stavenue.co.uk](mailto:info@1stavenue.co.uk)

# 17 Bessemer Place, North Greenwich, London, SE10 0GP



<b>KITCHEN/ LIVING/DINING AREA</b>	5.300m x 5.250m	17'4" x 17'3"
<b>MASTER BEDROOM</b>	3.800m x 3.500m (max)	12'6" x 11'6" (max)
<b>BEDROOM 2</b>	4.100m x 2.800m	13'6" x 9'2"

Viewing by appointment with 1st avenue.

**Call: 020 8293 8600**

1st avenue, 128 Metcalfe Court, West Parkside, London SE10 0EL  
email: info@1stavenue.co.uk