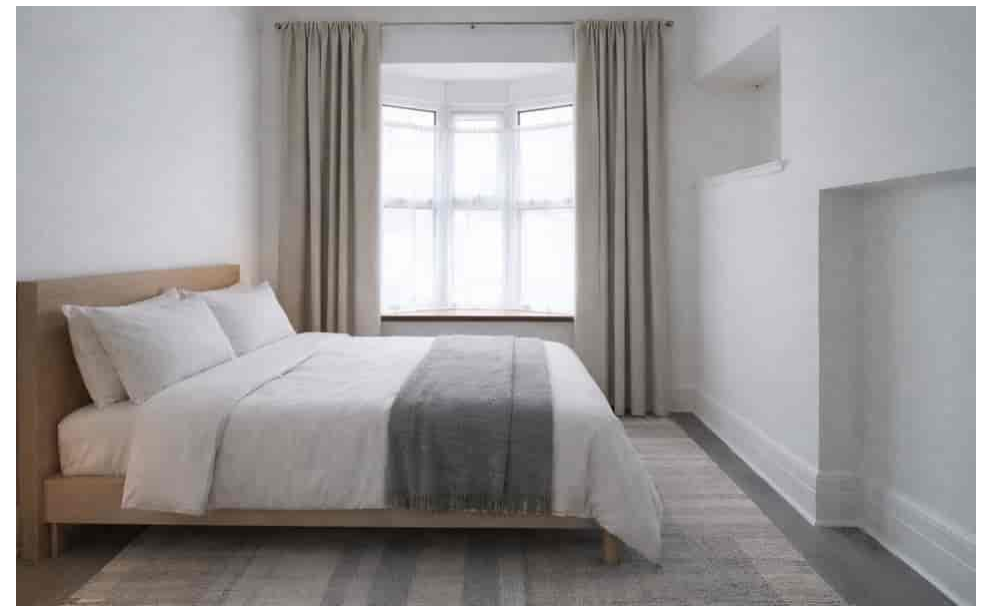
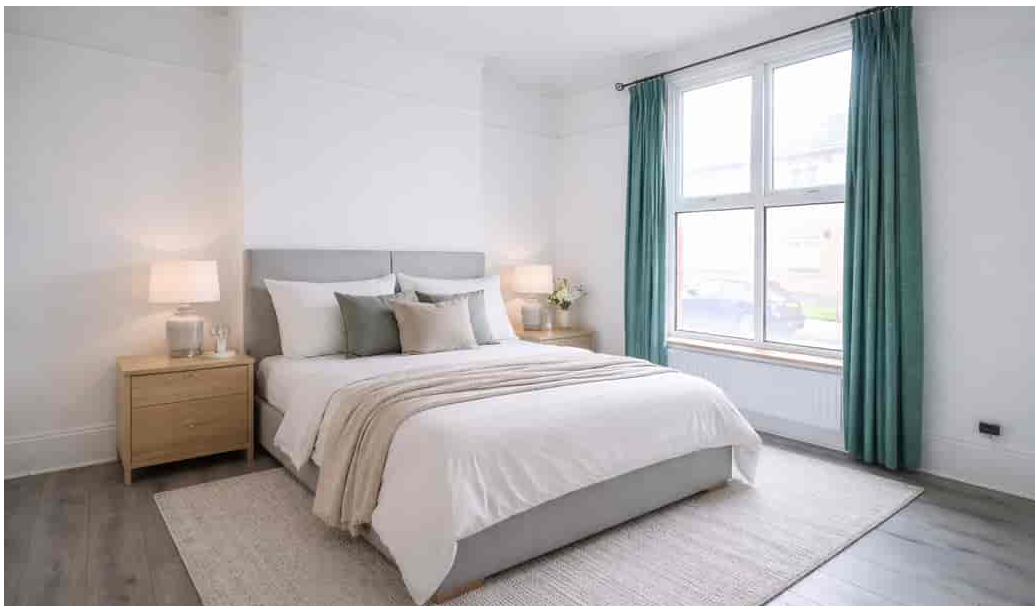




THE ESTATE AGENTS  
1977



**Stimpson Avenue, Northampton NN1 4JN**  
**Offers Over £200,000 - Leasehold**



## PROPERTY DESCRIPTION

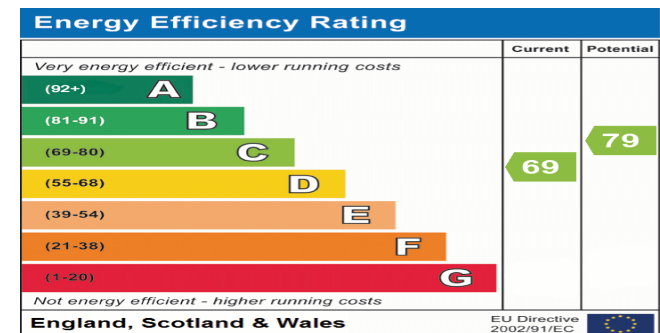
The Estate Agents are pleased to present this versatile and rarely available three bedroom apartment, in the highly desirable and sought after Abington area. The spacious accommodation briefly comprises; entrance hall, living room, dining room/fourth bedroom, two further bedrooms, family bathroom and fitted kitchen. A further bedroom or reception room is in the basement. Outside the property benefits from an off road parking space, courtyard area and store.

Abington is a sought after area close to local amenities, Abington Park and the vibrant Wellingborough Rd which has a variety of shops, bars and restaurants.

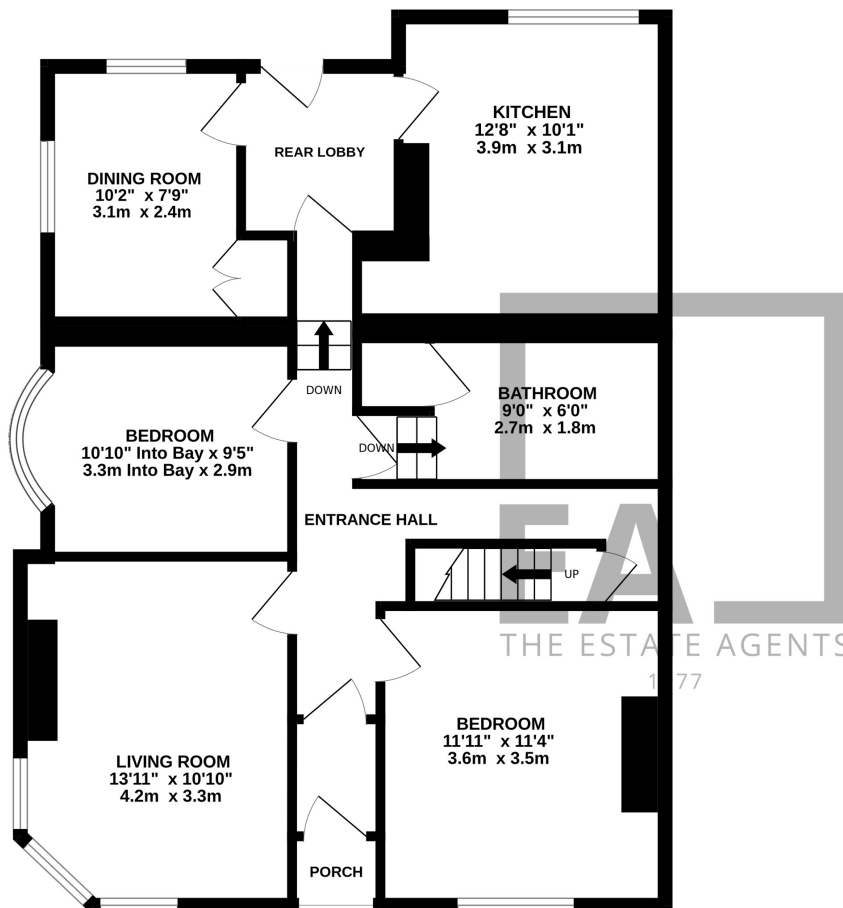
Note: Some of the photos used have been virtually staged.

## POINTS OF INTEREST

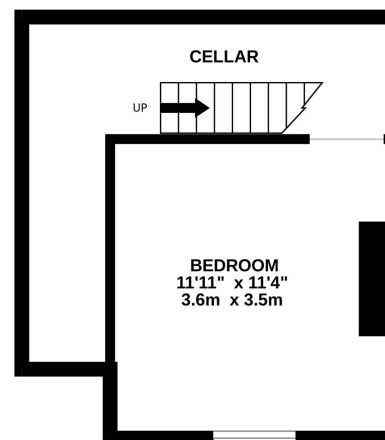
- Three Bedroom Apartment
- Versatile & Spacious Accommodation
- Basement Room
- Off
- Off Road Parking
- Approx. 957 Years Remaining On The Lease
- No Service Charges Or Ground Rent
- Ideal First Time Buy/Investment Opportunity
- Vacant Possession
- EPC Rating - C



GROUND FLOOR  
820 sq.ft. (76.2 sq.m.) approx.



BASEMENT  
235 sq.ft. (21.9 sq.m.) approx.



TOTAL FLOOR AREA : 1055 sq.ft. (98.0 sq.m.) approx.

Whilst every attempt has been made to ensure the accuracy of the floorplan contained here, measurements of doors, windows, rooms and any other items are approximate and no responsibility is taken for any error, omission or mis-statement. This plan is for illustrative purposes only and should be used as such by any prospective purchaser. The services, systems and appliances shown have not been tested and no guarantee as to their operability or efficiency can be given.  
Made with Metropix ©2026