



17 Beacon Way

LYMPNE, Hythe
CT21 4LJ

£575,000 FREEHOLD

FOR SALE WITH BURNAP + ABEL... Welcome to your dream home on Beacon Way, Lympne, Hythe. This stunning 3 bedroom detached bungalow has been fully renovated and extended to combine modern design with comfortable living. Step inside to find a spacious lounge perfect for relaxing evenings in, while the open plan kitchen/diner features bi-folding doors that lead out to the beautifully landscaped garden - ideal for al fresco dining and entertaining guests. The three bedrooms offer plenty of space for the whole family, with a stylish bathroom and en suite adding a touch of luxury. Outside, the garden is a true oasis with a bar area for summer cocktails and a separate insulated shed that can be converted to provide the perfect work-from-home solution. Convenient off-road parking ensures you never have to worry about finding a spot for your vehicles. Don't miss out on this incredible opportunity to own a truly special property in an idyllic location. Book your viewing today!



Porch

Entrance Hall

Lounge

15' 1" x 12' 3" (4.60m x 3.73m)

Kitchen/Dining Room

22' 7" x 12' 10" (6.88m x 3.91m)

Utility Room

Family Bathroom

11' 3" x 5' 5" (3.43m x 1.65m)

Bedroom One

18' 10" x 9' 8" (5.74m x 2.95m)

Walk-In-Wardrobe

En-Suite

Bedroom Two

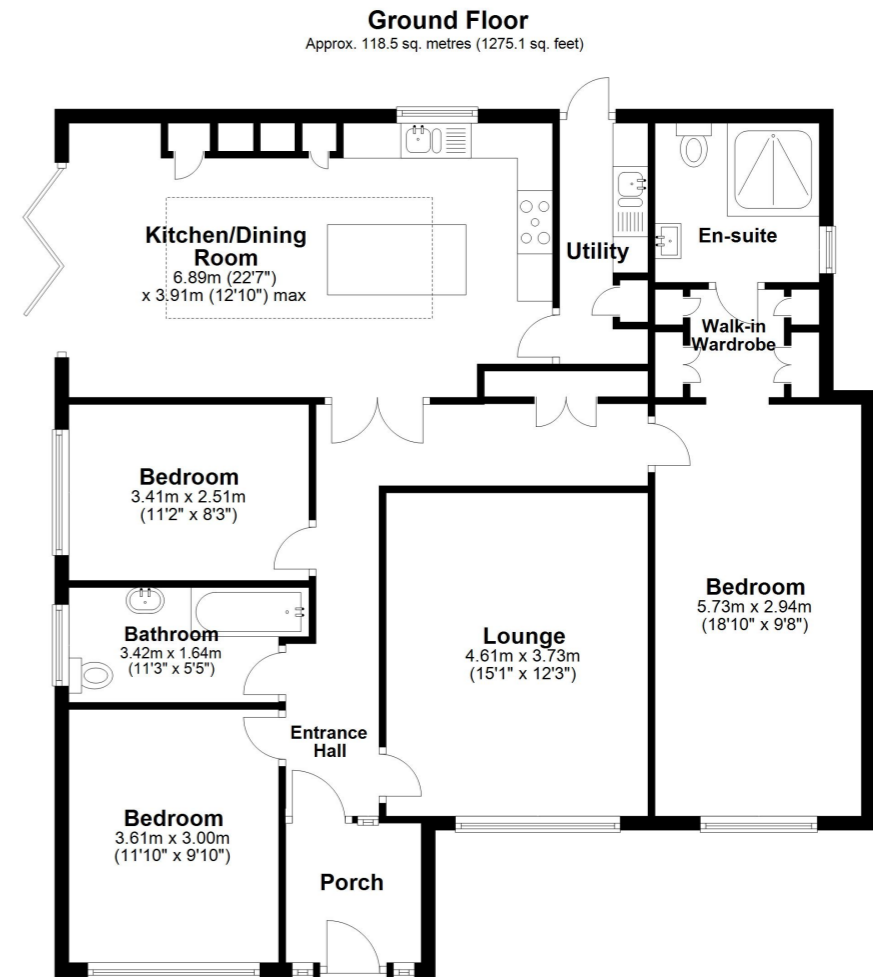
11' 10" x 9' 10" (3.61m x 3.00m)

Bedroom Three

11' 2" x 8' 3" (3.40m x 2.51m)

Rear + Side Gardens

Off Road Parking



Whilst every attempt has been made to ensure the accuracy of the floor plan contained here, measurements of doors, windows, rooms and any other items are approximate and no responsibility is taken for any error, omission or mis-statement. This plan is for illustrative purposes only and should be used as such by any prospective purchaser.
Plan produced using PlanUp.

