



Moorhouse Lane
Whiston
Rotherham
South Yorkshire
S60 4NH

Offers in Excess of £395,000

bettermove 

Moorhouse Lane

Rotherham

Bettermove are proud to present this 3 bedroom Detached House in Whiston available with no forward chain.

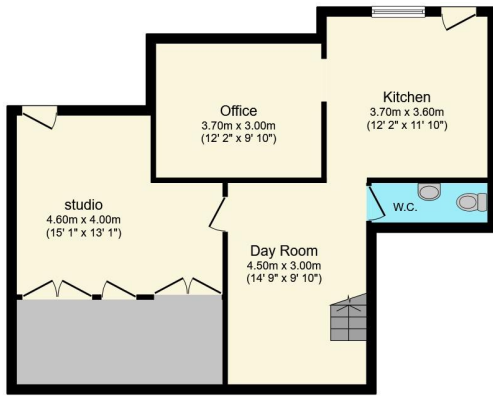
The property benefits from double glazing, gas central heating throughout, solar panels and has off street parking available via the driveway and the garage. The council tax band is F.

The interior of this beautifully presented property comprises a spacious living room, the fitted kitchen with dining area, second reception room and a convenient WC on the ground floor. The first floor consists of three bedrooms including the master bedroom with an ensuite bathroom. The lower ground floor hosts two more reception rooms, kitchen space and a second WC. The exterior of the property boasts a private rear garden, with a stream running along the bottom its perfect for enjoying the summer months.

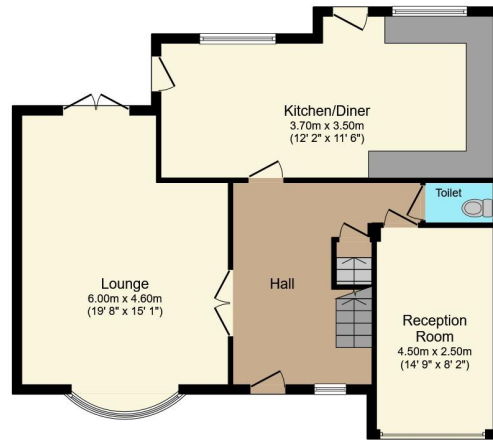
Located in the popular town of Whiston, the property is close to a range of amenities, including shops, supermarkets, restaurants and pubs. Excellent transport connections can be found from the M1 and local bus routes providing easy access into Sheffield.

This exciting opportunity should not be missed! All enquiries can be made through Bettermove on 0330 004 0050.

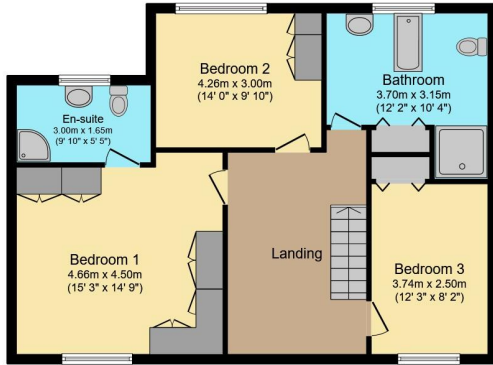




Lower Ground Floor



Ground Floor



First Floor

Total floor area 222.9 sq.m. (2,399 sq.ft.) approx

This floor plan is for illustrative purposes only. It is not drawn to scale. Any measurements, floor areas (including any total floor area), openings and orientation are approximate. No details are guaranteed, they cannot be relied upon for any purpose and they do not form part of any agreement. No liability is taken for any error, omission or misstatement. A party must rely upon its own inspection(s). Plan produced for Purplebricks. Powered by www.focalagent.com



20-22 Bridge End, Leeds, LS1 4DJ
t: 0330 004 0050 e: hello@bettermove.co.uk
www.bettermove.co.uk