



HILTON KING & LOCKE

SPECIALISTS IN PROPERTY



21 Tunmers End, Chalfont St Peter. SL9 9LW.

£800,000 Freehold

Hilton King and Locke are delighted to bring to the market this fantastic semi-detached property, extended to offer four excellent sized bedrooms, spacious living accommodation and a fully refurbished kitchen located in a quiet cul-de-sac, Tunners End in the heart of the ever-popular village of Chalfont St. Peter.

This property is presented in superb condition throughout providing ample storage space and presents substantial ground floor accommodation comprising with the converted office space which could be utilised as a third living room or a fifth bedroom. The beautifully presented, newly renovated kitchen/diner provides all your integrated appliances from dishwasher, double oven, microwave to cupboard space at both base and eye level. The kitchen provides views over the private and secluded garden which is mainly laid to lawn. The diner leads on to another reception room which has a skylight to fill the room with natural daylight throughout, this rooms gives access to the downstairs bathroom with a shower to benefit the use of ground floor living.

As you move up to the first floor, there is a beautifully fitted neutral family bathroom benefitting with a shower, three excellent sized bedrooms, one being completed with fitted wardrobes and a large laundry room/utility area.

Finally, the second floor holds the impressive double sized master bedroom finishing with fitted wardrobes, a modernised ensuite, ample eave storage and a



fantastic sized, walk-in dressing area.

The garden to the rear of the property is beautifully presented and private, perfect for hosting in the summer months.

Tunners End is a stone's throw from a wide range of recreational facilities and amenities; including Gold Hill Common & the villages many parks, a well-equipped high street offering highly rated places to eat and drink, along with many boutique shops and a leisure centre.

Renowned for its education system, Chalfont St. Peter offers an excellent choice of state and independent schools, including Chalfont St Peter Infant School, Church of England Academy and Community College all within easy walking distance. Dr Challoner's High School for Girls and Dr Challoner's Grammar School for Boys are also within catchment, along with Chesham Grammar and Beaconsfield Grammar School for Girls.

Gerrards Cross provides a wider range of shopping facilities and a Mainline station with trains into Marylebone in approximately 22 minutes all within two miles of the property. Central London is easily accessible by road via the M40 (J1A) and M25 (J16) plus access to Heathrow and Gatwick Airports.

Early viewing recommended!



Important Notice

Particulars: These particulars are not an offer or contract, nor part of one. You should not rely on statements by Hilton King & Locke Ltd in the particulars or by word of mouth or in writing as being factually accurate about the property, its condition or its value. Hilton King & Locke Ltd does not have any authority to make any representations about the property, and accordingly any information given is entirely without responsibility on the part of the agents, seller(s) or lessor(s).

Photographs etc: The photographs show only certain parts of the property as they appeared at the time they were taken. Areas, measurements and distances given are approximate only.

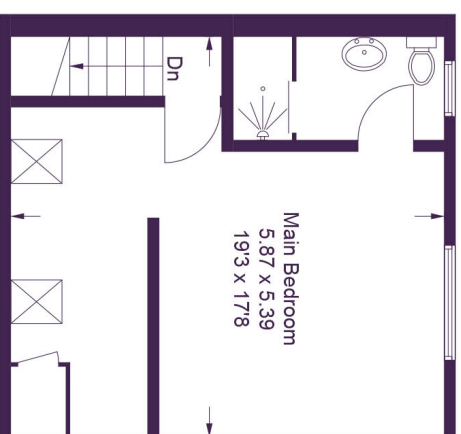


20 Market Place
Chalfont St Peter Buckinghamshire SL9 9EA

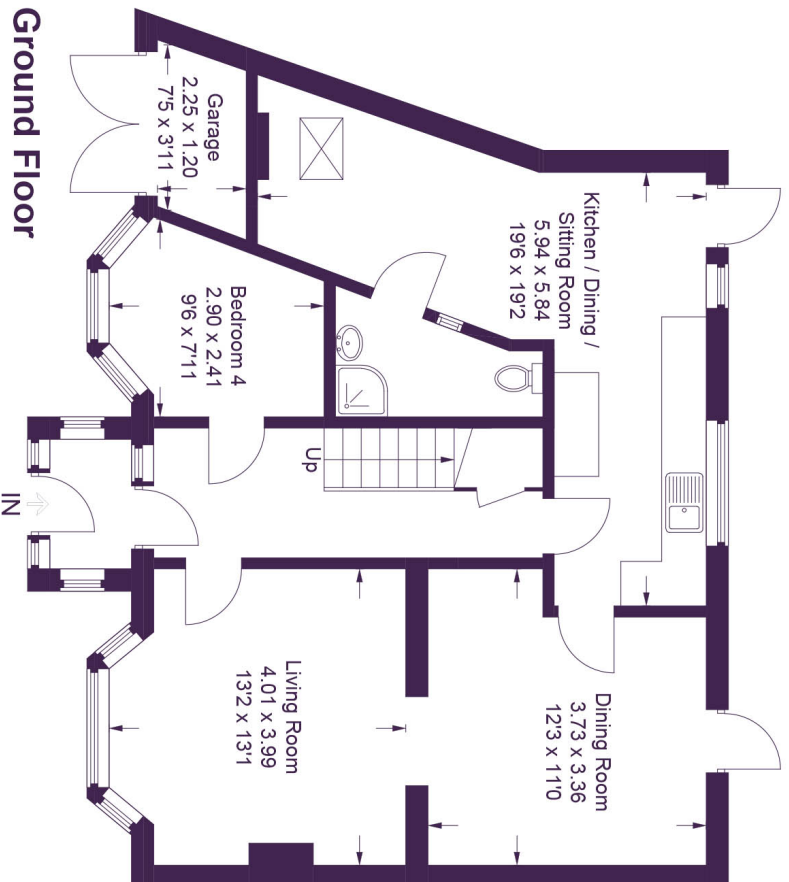
Tel: 01753 480060
csp@hklhome.co.uk

21 Turnmers End

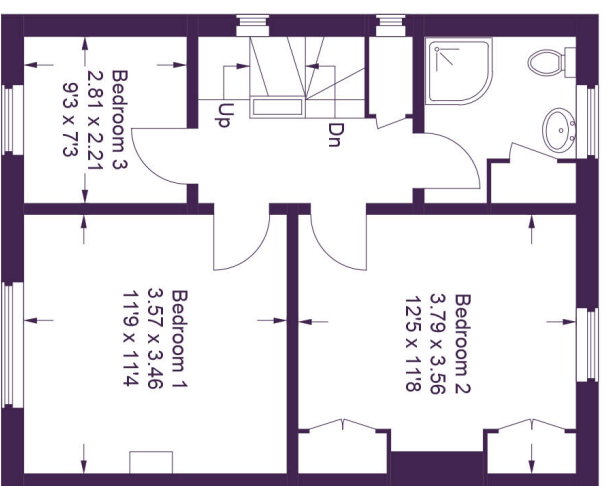
Approximate Gross Internal Area
Ground Floor = 76.1 sq m / 819 sq ft
First Floor = 43.9 sq m / 472 sq ft
Second Floor = 31.6 sq m / 340 sq ft
Garage = 3.0 sq m / 32 sq ft
Total = 154.6 sq m / 1,663 sq ft



Second Floor



Ground Floor



First Floor

This plan is for layout guidance only. Not drawn to scale unless stated. Windows and door openings are approximate. Whilst every care is taken in the preparation of this plan, please check all dimensions, shapes and compass bearings before making any decisions reliant upon them.