

Day & Co  
ESTATE AGENTS

28 Cavendish Street  
Keighley  
BD21 3RG



9 Clock View Street, Beechcliffe,  
Keighley, West Yorkshire, BD20  
6BB

**OFFERS OVER £75,000**

T: 01535 664609

W: [www.dayandcoestateagents.co.uk](http://www.dayandcoestateagents.co.uk)

E: [keighley@dayandcoestateagents.co.uk](mailto:keighley@dayandcoestateagents.co.uk)



- END TERRACE PROPERTY
- ACCOMMODATION OVER THREE FLOORS
- EPC Rating E

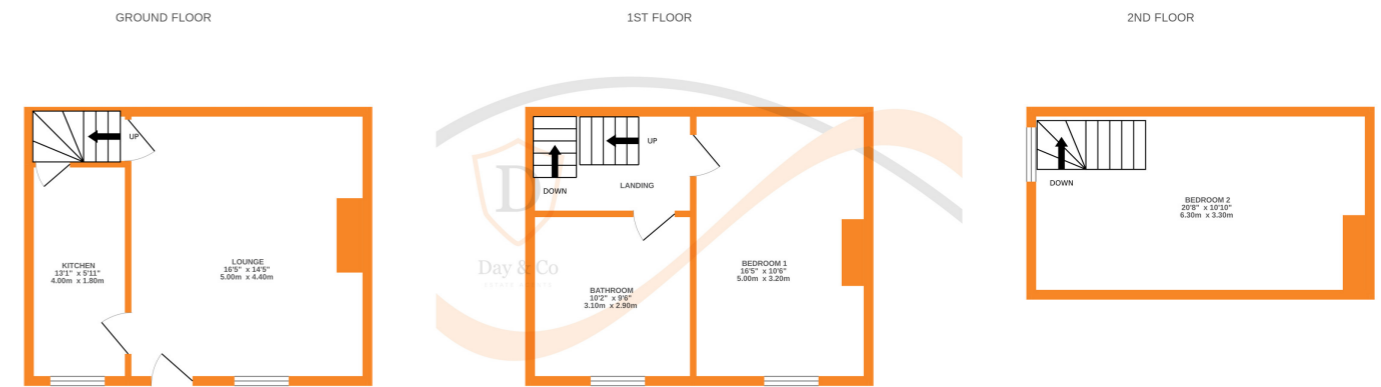
- TWO DOUBLE BEDROOMS
- GAS CENTRAL HEATING & DOUBLE GLAZING

## SUMMARY

\*\* STONE END TERRACE (BACK/BACK), ACCOMMODATION OVER THREE FLOORS, TWO DOUBLE BEDROOMS, SPACIOUS LOUNGE, LARGE BATHROOM, GAS CENTRAL HEATING, DOUBLE GLAZING, EPC RATING E \*\*

## FULL DESCRIPTION

A stone built end terraced (Back/Back) property located in the Beechcliffe area close to the town centre and local schools yet having good public transport links to further afield. The property benefits from double glazing and gas central heating. Very briefly the property comprises of a spacious lounge with entrance door and window to the front, kitchen with range of base & wall units, sink, window to the front, access to cellar. To the first floor - Bedroom 1 with window to the front, bathroom comprising of a corner bath with shower mixer tap and screen, w.c., wash basin and window to the front. Upper Floor - Bedroom 2 with window to the side. EPC Rating E



Whilst every attempt has been made to ensure the accuracy of the floorplan contained here, measurements of doors, windows, rooms and any other items are approximate and no responsibility is taken for any error, omission or mis-statement. This plan is for illustrative purposes only and should be used as such by any prospective purchaser. The services, systems and appliances shown have not been tested and no guarantee as to their operability or efficiency can be given.  
Made with Metropix 60022.