







- Redrow Walsingham
- Three Reception Rooms
- Breakfast Kitchen & Utility Room
- Four Double Bedrooms
- Three Bathrooms
- Double Garage & Driveway
- Gardens

### Description

The Walsingham by Redrow, is the forerunner and built on the same floor print as the current Richmond design, which has proved a popular choice on the two Hartford developments, with prices there now reaching close to £750,000. This particular property is presented to high standard and features, three reception rooms, a hexagonal kitchen breakfast room, a utility room, an entrance hall, a cloakroom and integral double garage on the ground floor and a large, galleried landing, four double bedrooms, two en-suite bathrooms and family bathroom on the first floor. Externally there is a pressed concrete double driveway and manicured garden to the front and a good size garden to the rear with patio area and level lawn.





**Location**

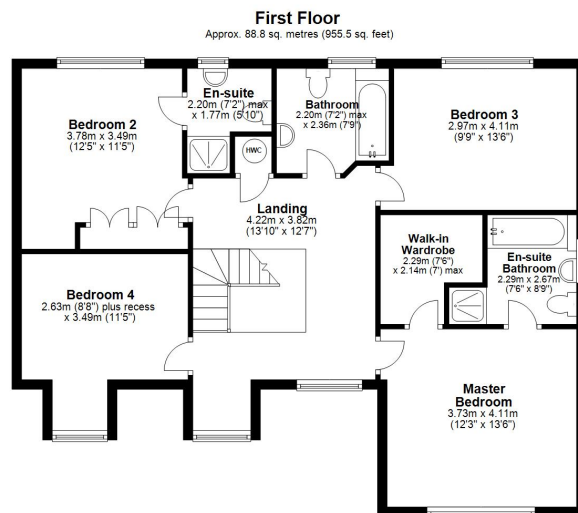
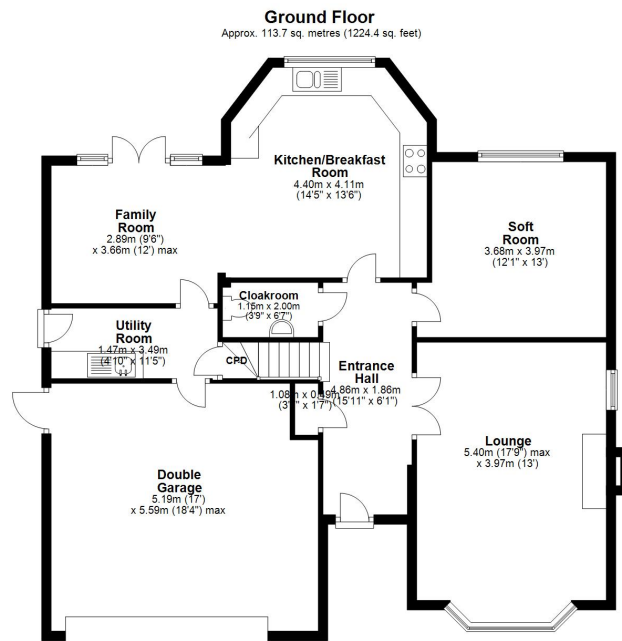
The property is situated on the popular Kingsmead development and close to Sir John Deane's Six Form College. Local amenities are well catered for with a good selection of shops and other facilities available at the Kingsmead local centre, which is also home to the very popular Kingfisher Public House. Two railways serve the area with the West Coast Main Line service running through Hartford, enabling access to London within two hours. Trains to Manchester and Chester run from Greenbank or Northwich station. The nearby A556 easily facilitates access to the region's major road network with Manchester and Liverpool airports both within 20 miles. Above all, where Northwich really excels is its range of excellent schools. Kingsmead has its own very well regarded and Ofsted rated 'Outstanding' primary school and The County High School Leftwich, which is also rated Outstanding by Ofsted is within walking distance. Nearby Northwich caters for a more comprehensive range of amenities, including leading supermarkets with Waitrose, Sainsbury's and Tesco all represented.

**Tenure**

FREEHOLD

**EPC Rating:**





Total area: approx. 202.5 sq. metres (2179.9 sq. feet)



Williams Estates is the trading name of Williams Estates (Ltd). Registered address 33, The Green, Hartford, Northwich, Cheshire, CW8 1QA.  
Reg number 07682683. Director Andrew P Williams



These particulars, whilst believed to be accurate are set out as a general outline only for guidance and do not constitute any part of an offer or contract. Intending purchasers should not rely on them as statements of representation of fact, but must satisfy themselves by inspection or otherwise as to their accuracy. All measurements quoted are approximate. We are unable to confirm the working order of any fixtures and fittings including appliances that are included in these particulars. No person in this firm's employment has the authority to make or give any representation or warranty in respect of the property.